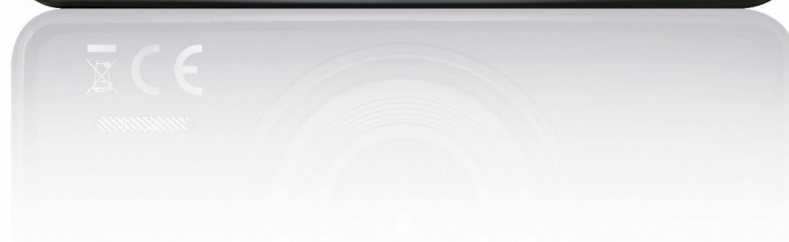




EYEDRIVE FHG200
Rejestrator trasy / Car camera



English

SAFETY MEASURES

We request that you read the instruction manual and recommendations set forward therein.

- In order to avoid an electric shock, never open the housing. Damage to the warranty seal shall void the warranty.
- Do not attempt to disassemble car DVR and drop from high place.
- Keep the car DVR away from water and other liquids.
- After prolonged use, it is normal that the unit temperature will rise.
- The best working temperature range is: -10 – 55°C
- Please use the accessories provided by the manufacturer.
- The device supports maximum 32GB TF cards, please use 8GB (Class 10) or above.

DOWNLOADABLE SOFTWARE

Ferguson has taken every effort to provide users with software updates in order to ensure that the parameters of the device are up to date. Ferguson reserves itself the right to amend, change or modify the software used in the device as it shall choose and without prior notification. The latest version of the software is available on the website <http://www.ferguson-digital.eu>

ABOUT THE INSTRUCTION MANUAL

Ferguson Sp. z o.o. has made every effort to provide the most current information about its products. Ferguson Sp. z o.o. does not grant any guarantee as to the contents of the present instruction manual and disclaims any implied guarantees concerning market value or suitability for specific purposes. The information contained herein is an instruction intended to enable the correct usage and maintenance of the receiver. Ferguson Sp. z o.o. reserves itself the right to introduce amendments, changes or translations of the instruction manual without prior notification thereof. For this reason, we recommend you regularly visit our website in order to obtain the latest information.

MARKINGS AND SIGNS APPLIED TO THE DEVICE



Risk of electric shock - do not open. This notice warns the user not to open the device housing. The housing may be opened solely by authorized service technicians.



CE logo.

The logo informs that the device conforms to the terms and conditions of Directive 2004/108/EC concerning observance by Member States of provisions regulating electromagnetic compatibility, and to the terms and conditions of Directives 2006/95/EC concerning observance by Member States of provisions regulating low voltage electricity and safety with relation to the handling and operation of electrical equipment.



Your product is designed and manufactured with high quality materials and components, which can be recycled and reused.



When this crossed-out wheeled bin symbol is attached to a product it means that the product is covered by the European Directive 2002/96/EC. Please inform yourself about the local separate collection system for electrical and electronic products.

R&TTE Hereby Ferguson Sp. z o.o., declares that the device is in compliance with the essential requirements and other relevant provisions of Directive 1999/5/EC. You can find the Declaration of Conformity on www.deklaracje.ferguson.pl

This product has been designed, tested and manufactured according the European R&TTE directive 1999/5/EC.

Please act according to your local rules and do not dispose of your old products with your normal household waste.

Correct disposal of your old product helps to prevent potential negative consequences for the environment and human health.

CE Ⓢ				
AT	BE	BG	CH	CY
CZ	DE	DK	EE	ES
FI	FR	GR	HU	IE
IS	IT	LI	LT	LU
LV	MT	NL	NO	PL
PT	RO	SE	SK	SI
UK				

This product supports Wireless LAN.



Your product contains batteries covered by the European Directive 2006/66/EC, which cannot be disposed with normal household waste. Please inform yourself about the local rules on separate collection of batteries because correct disposal helps to prevent negative consequences for the environmental and human health.



When this logo is attached to a product, it means a financial contribution has been paid to the associated national recovery and recycling system.

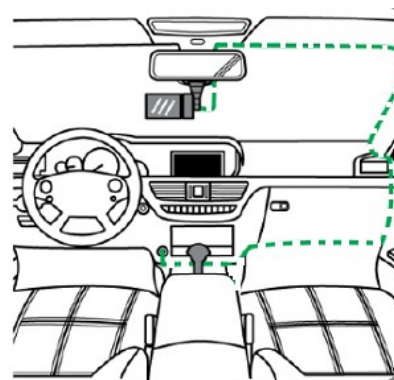
1. General information about the car DVR

1.1 Product Features

- Simple and elegant appearance.
- Supports GPS function, and track restore function.
- 170-degree 6G high-resolution ultra wide-angle lens, convenient to operate in a variety of occasions, high resolution video capture and easy to carry.
- Photosensitive device developed for car recorder, it can capture ultra clear pictures in dark places.
- WDR image processing technology: overcomes the hard light, glare and halos, which makes night vision better.
- Built-in WIFI wireless transmission. Smartphone can control the camera through APP, and the camera files can be transferred to the phone.
- Safer: Embedded battery over-temperature protection, when the temperature is too high, it can protect the battery from battery leakage and prevent fire explosion
- Cycle recording function, cancel the former files and store the new files automatically.
- Start the recording function automatically when the car is on
- Combining with the triaxial 3D gravity-sensing chip, the videos will be protected by locks automatically based on vehicle driving state.
- More parking monitoring modes are added to keep your car in an all-round and full-time manner.

1.2 Preparation for First Use Device Installation

- Fix the vehicle-mounted power line based on that the specific interior environment can't affect the driving sight. Recorder should be located in front of the interior mirror to get more comprehensive view.
- Do not install the equipment in the position which will scatter the driver's attention or block the sight line.
- Part of the vehicles model still have power source unit after the engine is gone. You should pull out the vehicle-mounted power line when leaving the car to avoid the accident.



1.3 Installing the TF card

- Please choose the TF card of class 10 and above. We'd better to choose the TF card with 8 GB or above to keep a more complete record.
- Please format the TF card before using the machine when using the TF card in the first time.

2. Car DVR settings

2.1 Software Setup

- **Language setting.** Pressing the Menu button and enter the main menu. Choose 🇺🇸 language selection, press the **OK** button to do the language selection. Press **Up** and **Down** buttons to choose the language you want, and press the **OK** button to confirm it.
- **Time and time zone settings:**
 - ✓ When using for the first time, please go the system menu to enter the option of “Clock setting” to set the time as the current date and time.
 - ✓ Time zone setting: There is GPS time service function on this machine. After GPS positioning successfully, the date and time of the machine would be updated automatically. To get the correct time service, please go the option of “Time Zone Selection” to choose the corresponding time zone after learning your local time zone.
- You can enter the system menu to do the other individual settings.

2.2 The Major Function and Basic Operation of Machine:

- **The On and Off of the Machine**
 - ✓ In normal driving mode: Connect the vehicle-mounted power well. The machine would be on and start to record automatically when the car is on, which shall be off automatically when the car is off.
 - ✓ Manual mode: You can press the **Power** button manually to turn on or off the machine.
- **WIFI Mode.** After startup, initial setup of WIFI is off. When using, the following operations should be completed:
 - ✓ Please press and hold on the **Up** button to turn on the WIFI; then press and hold on the **Up** button again to turn it off.
 - ✓ Confirm that “**Ferguson smart cam**” APP application software is installed on the device. Android version should be 4.0 or higher.
 - ✓ Download mode: for Android, please enter Google play or Android Market to search “**Ferguson smart cam**”.
 - ✓ Open the WLAN in the phone setup to connect to the network recorder. (Initial password is: 1234567890).



NOTE: After opening APP software on the mobile phone, you can look at the camera's real-time sync pictures on the mobile phone. You can send camera files to the phone and operate the camera on your phone.

2.3 Parking Monitoring Mode

Two parking monitoring modes are available on this machine, that is, **P Mode** and **T Mode**. The specific application and description are as follow:

- **P Mode (vibration boot):** press and hold on the **Down** button to turn on or turn off the function of vibration boot. When this function is on, the machine will automatically start and record if collisions occur to vehicles. Then it will shut down on its own after 20s. As for starting the mode, the power in the local battery will be consumed. Therefore, users can add mobile power as the source in practical use; meanwhile, some certain setting shall be made in the menu.
- **T Mode (Time-lapse photography):** press and hold on the **OK** button to turn on or turn off the function of time-lapse photography. When this function is on, continuous recording will

- be possible in the speed of 1 photo per second, after which they will be played in the speed of 30 photos per second. Users can enjoy the following items under such mode:
 - ✓ A. Available video time can be increased 30-fold, that is to say, if the normal video time of the primary 8G TF card is 1 hour, then the video time can be increased to 30 hours under this mode. For the 32GB memory card, the video in at least one week will not be covered.
 - ✓ B. Customers can view all the videos in the speed of 30X without missing the unexpected abnormal events during recording period, that is, both contents and efficiency are taken into consideration.



NOTE: This mode is mainly used to the real time monitoring when parking. The external power source is needed because the machine has to work all the time during such process and such external power source shall be selected by customers according to their own actual situation.

2.4 Video Recording

After startup, video recording will be started automatically, and it will be stopped or restarted by pressing **OK**.

2.5 Motion Detection Recording

When this function is on, the machine can detect what is ahead. The recording will be stopped if no change happens, while it will be restarted if the object ahead removes, which in return makes your recording files more valuable and disk space utilization more efficient.

2.6 Cycle Recording

When the TF card is full, the former unprotected files would be covered automatically when recording again. For emergencies file protection, the device equipped with gravity sensor will automatically protect current recording to avoid being overwritten when the car has a certain degree of vibration. Meanwhile protected files will be named as: SOS_XXXX.mov for difference.

2.7 SOS Lock

In addition to the automatic protection mechanism, the machine also offers a manual protection mechanism; in the process of recording, if the customer thinks that the current recording needs to be protected, he can press the Menu button to enter the hand protection and press it again to cancel the current file protection



NOTE: sensitivity of gravity sensor can be set in the system menu.

2.8 Photo Mode

In video recording mode, you can convert to photo mode by pressing the Mode button; you can take a photo by pressing the **OK** button. We can use the digital zoom by pressing the **Up** and **Down** buttons. Enter the main menu and choose the image mode to set the image resolution, AWB sensitivity, special efficiency and to do the other mode selection.

2.9 Playback Mode

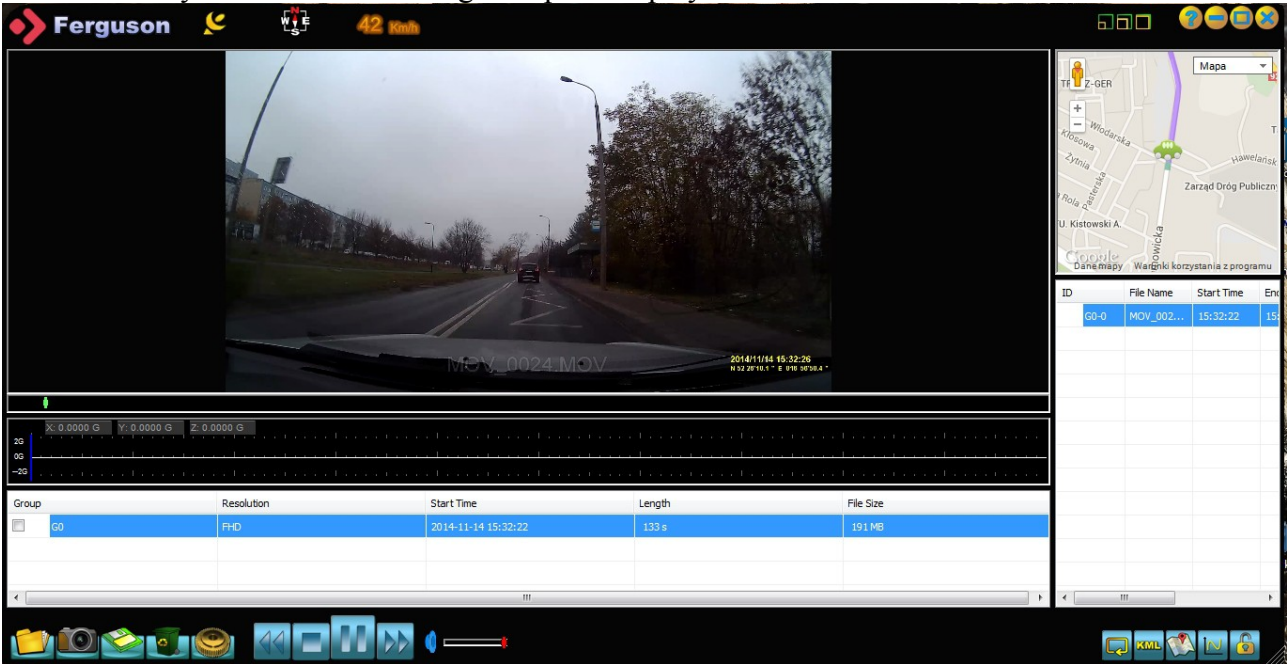
Under the playback mode, we can do the following three operations by pressing menu button: adjust the music volume, delete the files, protect and unlock protect the files.

The playback mode includes MOV playback and image playback. Under video recording mode, we can enter MOV mode by pressing **Mode** button two times, enter image playback mode by pressing one more time.

2.10 GPS Function

The device supports internal GPS positioning module to record the complete driving path for the users.

When the GPS positioning unsuccessfully, the GPS shown on the screen is red, this would turn to green when the GPS locates successfully. Meanwhile, the current longitude and latitude and quantity of location satellites would be shown on the screen. To play the video by the attached player, the complete and whole driving path and current position would be displayed simultaneously. We can switch Google map in the player.



NOTE: The device does not support A-GPS function. The machine shall not be covered by buildings on the top. GPS would not locate successfully in the underground parking lot and in indoor environment.

2.11 Function Introduction of Shortcut Keys

- We can manually protect (unlock protect) the current video by pressing the **Up** button under video recording.
- Turn on/off the WIFI function by pressing and holding on the **Up** button.
- Turn on/off the P mode (vibration boot) by pressing and holding on the **Down** button.
- Turn on/off the T mode (Time-lapse photography) by pressing and holding on the **OK** button.

Technical Specifications

LCD screen size	2.7 display screen with high definition
Video Perspective	Oversized wide angle of 155 degree
Language Selection	English/Russian/Polish
Video recording	FHD 30fps/HD 60fps/HD 30fps/VGA 30fps
Built-in WIFI	IEEE 802.11b/n/g
Video format	MOV
SD card slot	Micro SD
Microphone/Speaker	Built-in
Optical source	50Hz/60Hz
TV output	NTSC/PAL
USB interface	USB2.0
Power interface	INPUT:DC 12/24V OUTPUT: 5.5V 2A
Battery	Built-in Li-polymer battery 110mA
System requirement	Windows 2000/XP/Vista/Windows 7



Note: The design and specifications of this machine would be amended at any time without prior notice. Any difference, please refer to the entity.