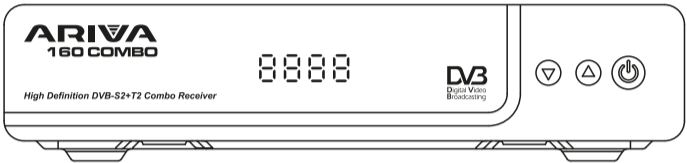




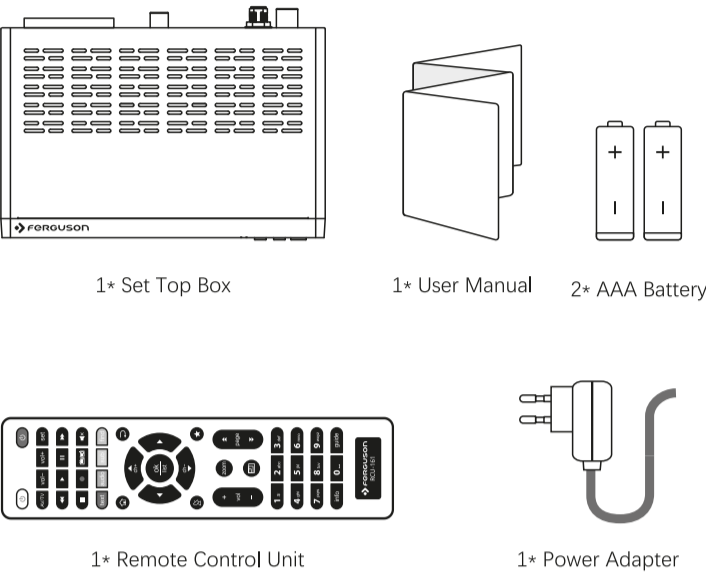
High Definition **DVB-T2+S2** Combo Receiver



Simplified Declaration of Conformity  
Importer: Ferguson Sp. z o.o., ul. Dworska 1, 61-619 Poznań  
Name: Ariva 160 Combo  
Type of device: Satellite and terrestrial TV receiver  
The aforementioned product complies with Directive 2014/53/EU of the European Parliament and of the Council of 16 April 2014 on the harmonization of the laws of the Member States relating to the making available on the market of radio equipment, and repealing Directive 1999/5/EC. The full Declaration of Conformity is available for download at: <https://ferguson-digital.eu/declarations-of-conformity/?lang=en>

User’s Manual

COMPONENTS

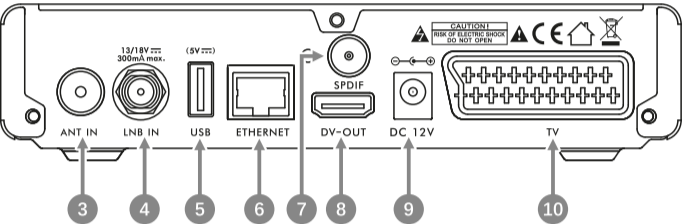


- RCU 161 Remote Learning Mode**
- Press and hold the "Set" button for over 2 seconds until the red indicator lights up. The red indicator turns on during learning mode.
  - Select the button to be programmed in the "TV Control Area" (except the "Set" button). The RCU 161 remote waits to receive a signal from the TV remote while the red indicator is flashing.
  - Point the LED of the TV remote towards the LED of the RCU 161 remote (keep a distance of about 3 cm). Press and hold the button on the TV remote that the RCU 161 remote should learn for over 2 seconds. The learning process is complete when the red indicator flashes quickly and then stays solid.
  - If you want the RCU 161 remote to learn other functions, repeat steps 2 and 3. Press the "Set" button to exit learning mode.

FRONT PANEL



BACK PANEL



- CH-/CH+:** Change channels
- POWER:** ON/OFF
- ANT IN:** Connect to Antenna
- LNB IN:** Connect to LNB
- USB:** Insert the USB device
- ETHERNET:** Connect to ethernet port
- SPDIF:** Connect to a digital amplifier
- DV-OUT:** Connect to TV HDMI input
- DC 12V:** Connect to the power supply
- TV:** Connect to the TV using a scart cable

REMOTE CONTROL UNIT



● The picture is only for reference, please make the object as the standard.

FOR YOUR SAFETY

To avoid electric-shock hazards, do not open the cabinet, refer servicing to qualified personnel only.

Keep the receiver away from flower vases, tubs, sinks, etc., in order to avoid damaging the equipment.

Do not expose the receiver un-der the sunlight. And keep it away from the heat source.

Do not block ventilation holes of the Receiver so that air can circulate freely.

Do not touch the receiver during thunder, since that might create electric-shock hazards.

Switch the receiver off whenever it remains out of service for an extended period.

Be sure to turn the Receiver off and disconnect the AC power cord before cleaning the Receiver surface. If the surface is dirty, wipe clean with a cloth which has been dipped in a weak soap-and-water solution and wrung out thoroughly, and then wipe again with a dry cloth.

INSTALLATION STEPS

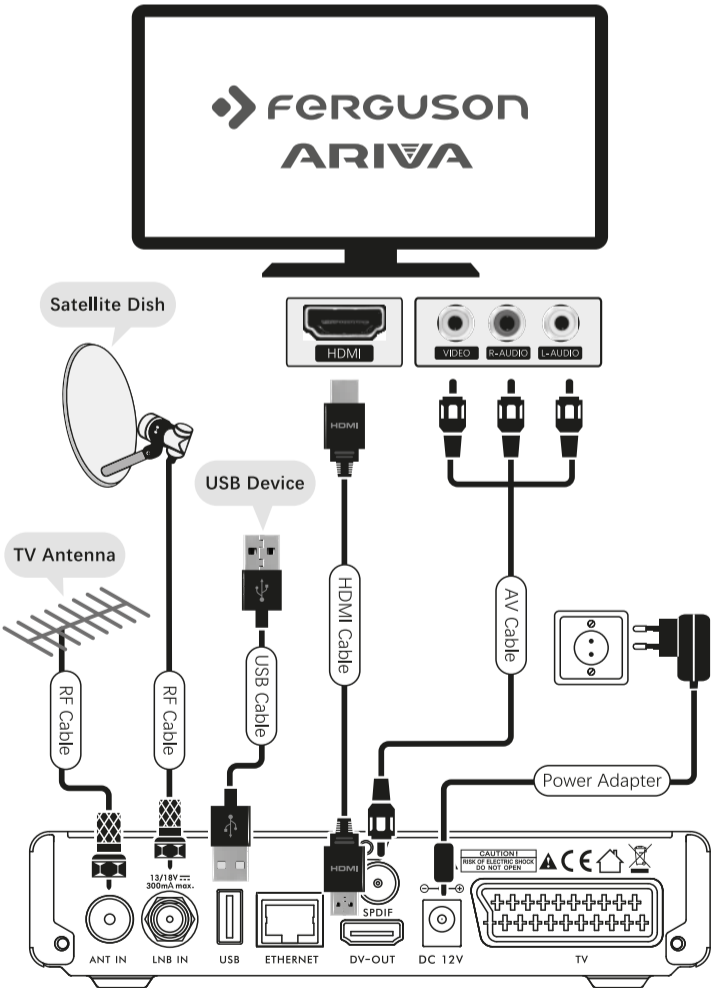
- Connect signal**
  - Connect LNB IN port on the receiver to satellite dish with an **RF cable**.
  - Connect ANT IN port on the receiver to TV antenna with an **RF cable**.
- Connect TV**

Please choose either of following 2 ways to connect TV.

  - Connect HDMI port on the receiver to HDMI port on TV with an **HDMI cable**.  
Note: Make sure your TV is set to HDMI input mode.
  - Connect AV OUT port on the receiver to corresponding ports on TV with an **AV cable**.  
Note: Make sure your TV is set to AV input mode.
- Connect power**

Plug the DC plug of power adapter into power input port on the receiver; plug the other end into a power outlet.
- If needed, Connect USB device**

Connect USB port on the left side of the receiver to USB device with a **USB cable**.



TROUBLE SHOOTING

Problem	Possible causes	What to do
The display on the front panel does not light up	Power cable is not connected	Check that the power cable is plugged into the power socket
No sound or picture, but the front panel shows red light	The receiver is in standby mode	Press the standby button
No sound or picture	The satellite dish is not pointing at the satellite	Adjust the dish. Check the signal level in the Antenna Setup menu
	No signal or weak signal	Check the cable connections, LNB and other equipment connected between the LNB and the receiver, or adjust the dish
Bad picture / blocking error	The satellite dish is not pointing at the satellite	Adjust the dish
	Signal is too strong	Check the signal input
	Satellite dish is too small	Change to a larger dish
	LNB noise factor too high	Change to an LNB with lower noise factor
The RCU is not working	LNB is faulty	Change the LNB
	Battery exhausted	Change the batteries
	RCU is incorrectly aimed	Aim RCU at the receiver, or check that nothing blocks the front panel

Note: If you have tried all of the actions suggested above, without solving the problem, please contact your dealer or service provider.