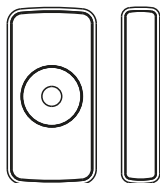


Multipurpose Sensor

User Manual

FS1MP

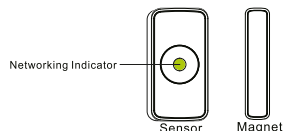


*Please read the user manual carefully before operation.



Product Introduction

This is the Zigbee Wireless Multipurpose Sensor. It adopts low consumption Zigbee wireless module, long battery life. Detect door or window's status by closing or opening magnet part with detector. Designed with double reeds, it can be used in different direction open doors or windows, easy installation and flexible to use. It is suitable for residence, houses, workshop, warehouse, office etc for anti-burglar alarm and an unauthorised access protection.

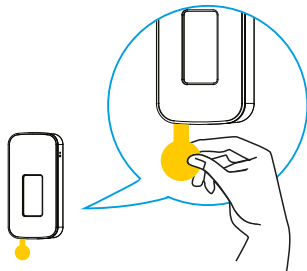


2

1. Power Voltage: 3V DC (2 x AAA battery)
2. Standby Current: $\leq 5\mu A$
3. Alarm Current: $\leq 30mA$
4. Detection Range: $>20mm$
5. Working Temperature: $-10^{\circ}C \sim +50^{\circ}C$
6. Environment Humidity: $\leq 95\% RH$
7. Networking Mode: ZigBee HA1.2
8. Networking distance: $\leq 100m$ (in free space)
9. Dimension: 76x36,6x16.5mm
10. Magnet Dimension: 76x13,9x16.5mm

Specification

4



- Remove battery insulation film to power on.

1



5

Adding device

Select the Smart Hub from the list of devices to which you want to add a new device (sensor) or device with factory settings restored.

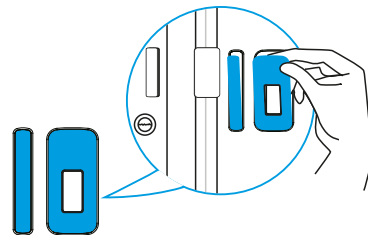
1. Click add devices on APP, entering networking mode.



When the LED in the control panel blinks blue, we confirm and go to pairing devices.

2

9

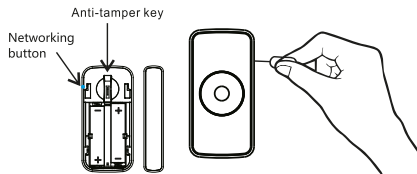


- Tear off double tape's back film, fix detector's hang board and magnet part at suitable position. (As picture, detector should be installed on doorframe or fixed position. Magnet part can be installed on movable part).

5

3

2. According to the tips on APP, keep pressing networking button, green LED flash quickly, tips appear on APP, green LED keep on for 3 seconds, network success,



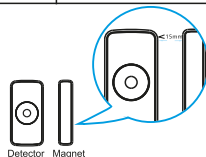
Delete device

In the application, click and hold the selected device, the "delete device" command will be displayed. After removed it, disconnect the network connection device by pressing and holding the pairing button. 6-fold LED blink in green means disconnection of the sensor network from the HUB.

4

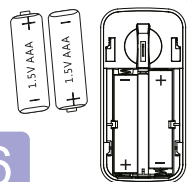
LED indications on the device:

| | |
|--------------|---|
| Add network | Pressing network button for 2 seconds, green LED flash (twice per second) |
| Quit network | Green LED flash six times (once per second) |
| Alarm | Red LED flash one time |



- Please install detector align with magnet part. The spacing between detector and magnet part should be less than 15mm (the magnet part can be installed at left or right of detector).

- Pay attention to how the base is mounted (slot up). Then slide the device to the base.



- Należy wymieniać baterię zgodnie z oznaczeniami potencjałów na urządzeniu.
- Zużyta bateria należy zutylizować w miejscu do tego przeznaczonym.

10

FERGUSON
Smart Home

Download app: **Ferguson Smart**



* this device requires Ferguson Smart Hub unit to work, not included.

11

1. Ferguson Sp. z o.o. is not responsible for damages caused by improper use of the Ferguson Smart Home system.
2. Batteries attached to the device are not an integral part and not a subject to complaint. The manufacturer is not responsible for their proper operation.
3. Declared wireless ZigBee network's range is based on laboratory tests and applies to open space, keep in mind that the materials used in the construction of houses and flats, wall thickness and conditions of electromagnetic fields can cause a significant reduction in network coverage.



Your product contains batteries covered by the European Directive 2006/66/EC, which cannot be disposed with normal household waste. Please inform yourself about the local rules on separate collection of batteries because correct disposal helps to prevent negative consequences for the environmental and human health.



Safety

12

FERGUSON
Smart Home
intelligent home solutions don't have to be expensive



13

More info
www.ferguson-digital.eu
and
wiki.ferguson.pl/en
Thanks!

14

16

17

18