



# FERGUSON Smart Home Smart WiFi Plug

User manual

*English*



Non-electricity  
shock design



Auto shift  
networks



Power metering  
function



Smart Power Socket Plug  
with WiFi function

---

## SAFETY MEASURES

We request that you read the instruction manual and recommendations set forward therein. Also remember to correctly position the satellite antenna!



In order to avoid an electric shock, never open the housing. Damage to the warranty seal shall void the warranty.



Disconnect the device from the mains during thunderstorms or when it is not to be used for an extended period of time. Please remember that the warranty does not cover damage to the equipment caused by a lightning strike.



Do not expose the device to direct sunlight. Place it away from sources of heat and humidity. Do not cover ventilation ducts, in order to ensure the correct circulation of air.



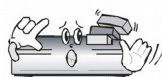
Place the device horizontally on a flat, even and stable surface.



If you move the device from a room that is warm to one that is cold (or vice versa), wait at min. 1 hour before connecting it to the mains. Otherwise, problems may arise.



The device should be placed away from vases, bottles, aquariums and other water containers in order to avoid damage. Do not touch the mains plug with your bare hands.



Do not place any objects on the housing of the device. This may cause overheating and reception problems.

Before commencing maintenance or installation work, disconnect the device from the mains. Do not clean the device with alcohol or liquids containing ammonia. If necessary, clean it with a soft, lint-free cloth wetted with a gentle solution of water and soap.

- Do not connect any cables when the mains plug is in the socket.
- Check the condition of your cables. Damaged cables may cause a fire.
- Please disconnect the device from the mains before connecting any cables.

## DOWNLOADABLE SOFTWARE

Ferguson has taken every effort to provide users with software updates in order to ensure that the parameters of the device are up to date. Ferguson reserves itself the right to amend, change or modify the software used in the satellite television device as it shall choose and without prior notification. The latest version of the software is available on the website <http://www.ferguson-digital.eu>

---

## ABOUT THE INSTRUCTION MANUAL

Ferguson Sp. z o.o. has made every effort to provide the most current information about its products. Ferguson Sp. z o.o. does not grant any guarantee as to the contents of the present instruction manual and disclaims any implied guarantees concerning market value or suitability for specific purposes. The information contained herein is an instruction intended to enable the correct usage and maintenance of the device.

Ferguson Sp. z o.o. reserves itself the right to introduce amendments, changes or translations of the instruction manual without prior notification thereof. For this reason, we recommend you regularly visit our website in order to obtain the latest information.

## MARKINGS AND SIGNS APPLIED TO THE device



Risk of electric shock - do not open. This notice warns the user not to open the device housing. The housing may be opened solely by authorized service technicians.



When this crossed-out wheeled bin symbol is attached to a product it means that the product is covered by the European Directive 2002/96/EC. Please inform yourself about the local separate collection system for electrical and electronic products.

Please act according to your local rules and do not dispose of your old products with your normal household waste. Correct disposal of your old product helps to prevent potential negative consequences for the environment and human health.



Your product contains batteries covered by the European Directive 2006/66/EC, which cannot be disposed with normal household waste. Please inform yourself about the local rules on separate collection of batteries because correct disposal helps to prevent negative consequences for the environmental and human health.



Your product is designed and manufactured with high quality materials and components, which can be recycled and reused.



CE logo.

The logo informs that the device conforms to the terms and conditions of Directive 2004/108/EC concerning observance by Member States of provisions regulating electromagnetic compatibility, and to the terms and conditions of Directives 2006/95/EC concerning observance by Member States of provisions regulating low voltage electricity and safety with relation to the handling and operation of electrical equipment.



Hereby Ferguson Sp. z o.o., declares that the device is in compliance with the essential requirements and other relevant provisions of Directive 1999/5/EC. You can find the Declaration of Conformity on [www.deklaracje.ferguson.pl](http://www.deklaracje.ferguson.pl)

This product has been designed, tested and manufactured according the European R&TTE directive 1999/5/EC.



Double insulation logo.

This logo informs that the device is an electrically safe device, provided that it is used in accordance with the recommendations set forward in the chapter concerning safety.



Hot surface mark

CAUTION: HOT SURFACE. DO NOT TOUCH. The top surface over the internal heat sink may become hot when operating this product continuously. Do not touch hot areas, especially around the "Hot surface mark" and the top panel.



When this logo is attached to a product, it means a financial contribution has been paid to the associated national recovery and recycling system.

---

## BASIC INFORMATION

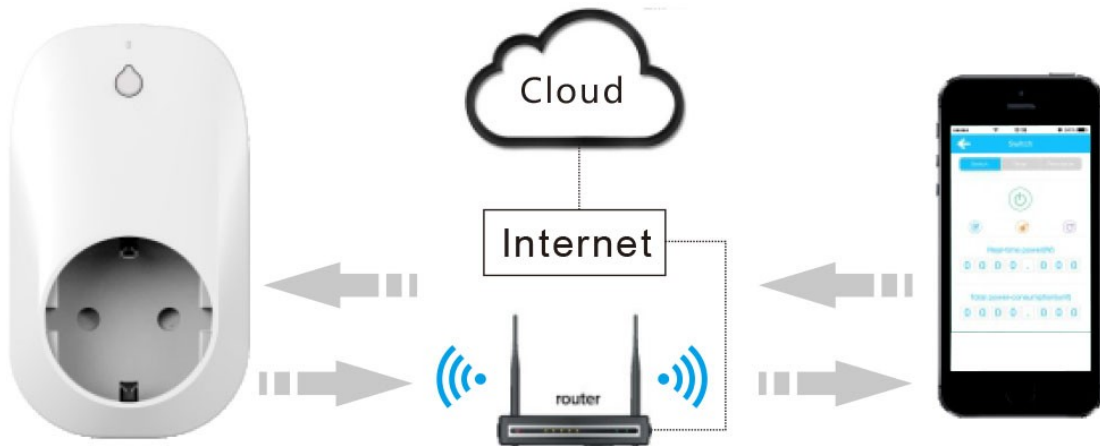
The smart controlled WiFi plug is designed with the latest advanced WiFi technology. The WiFi plug is an APP controlled device combining with WiFi connection, mobile phone (or tablet) or a server. This device could be controlled via an APP installed in an Android & IOS smart phones or tablets. The APP apply WiFi and Cellular mobile network signal to connect the device, then user can setup the APP to intelligently implement local or remote turn ON/OFF control.

Users could turn on and turn off electricity directly, or indirectly by setting multi-timer at anytime and anywhere, to greatly save their time.

### Wiring diagram



### Diagram of Equipment connection

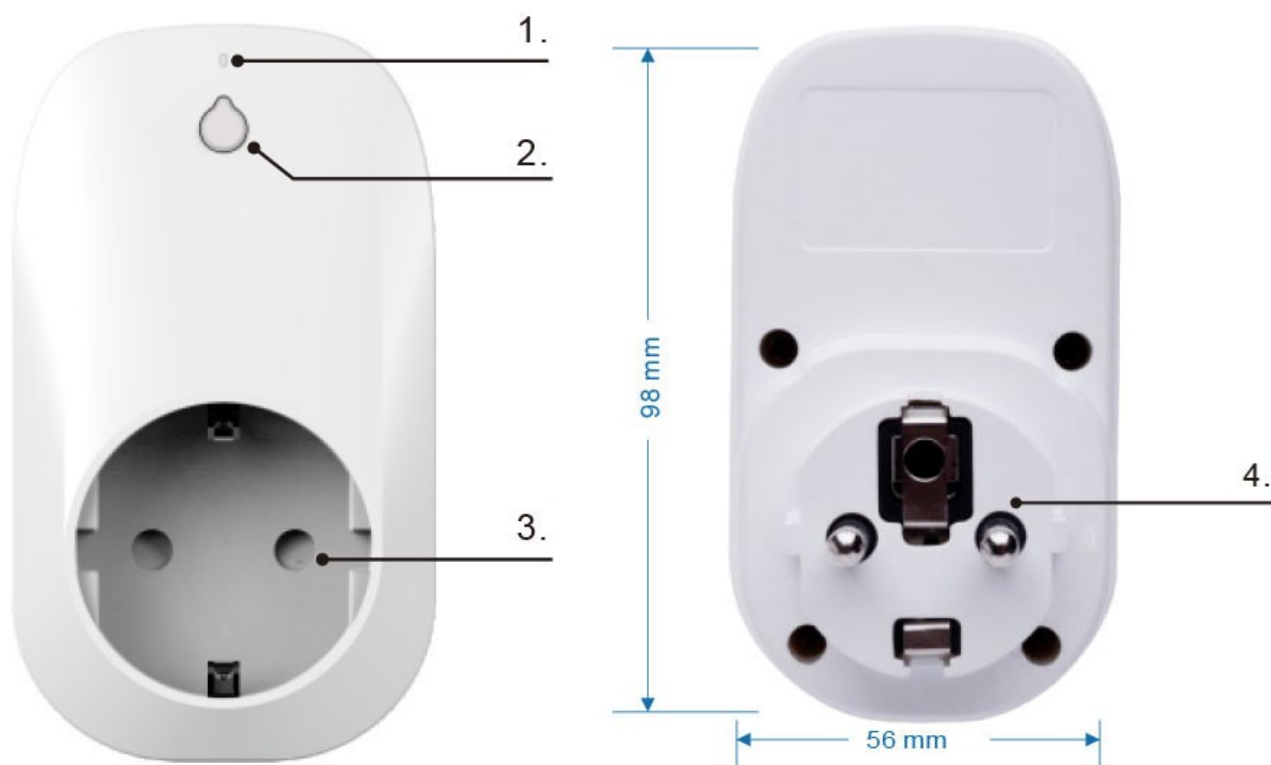


### NOTE:



Please keep in mind that new software may change the functionality of the device. Photographs and descriptions included in the instruction manual are for informational purposes only. If you should notice an error, please report it - we shall make every effort to have it rectified.

## Appearance



|   | Function              | Details   |
|---|-----------------------|---|
| 1 | Wifi indicator        | 1. LED blinks when WiFi connected successfully.<br>2. LED flash rapidly when WiFi connection failed or connected abnormal.  |
| 2 | Manual control button | 1. In need to manually power control, once clicking the button to turn on, twice to button off.<br>2. To reset factory default, press the button about 5 seconds till LED flash rapidly.<br>3. When power turn on, LED turn on, power turn off, LED turn off too.<br>4. To AP mode, press the button about 10 seconds till LED flash quickly become slow flash. |
| 3 | Plug output           | Standard EU output plug   |
| 4 | Plug input            | Standard EU input plug  |

---

## Quick Install Guide

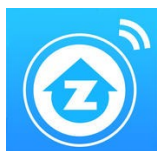
Below Hardware devices are necessary before configuration

- 1) Properly work WiFi router.
- 2) APP devices like mobile phone, tablet etc(Android and IOS).

### Configurations steps

#### Step 1.

Search the Apple App Store or Google Play for "WeConn".




You can use the direct links to the application.  
For this purpose scan, one of the following QR codes.



Download and install the app.

#### Step 2.

Check if app device(mobile phone or tablet) is normally connected to the WiFi router which need to be configured. There are kinds interface and functions for kinds app devices, no detail description here.

 Both client and AP mode is available for this WiFi plug, below is detail operation.

#### Step 3. Client mode

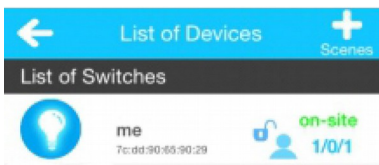
Restore WiFi plug's factory defaults firstly: insert the WiFi plug in outlet, when blue indicator start to flash normally, press the button on WiFi plug for about 5 seconds, then red indicator blink rapidly, release the button finish client mode configuration.



## Step 4. Adding new device

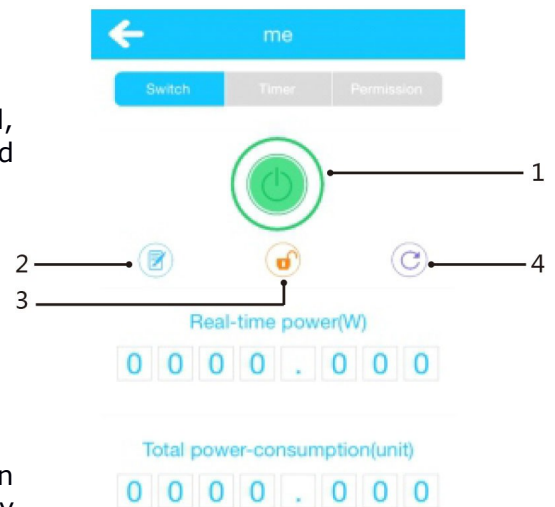


1. Input WiFi SSID
2. Input WiFi Password
3. Start configuration



"on-site" indicates the current status of the LAN

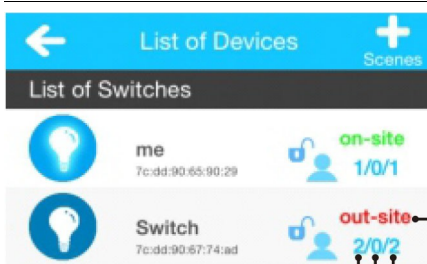
1. Control key
2. Edit device name
3. Lock: When set to lock only administrator control, when set as unlock, related members also could control.
4. Refresh data



## Step 5. Configuration of change Local network to remote control

When the mobile phone or tablet and WiFi plug is in different network, the APP interface will automatically display "out-site" instead of "on-site".

💡 This process to find and switch need some time.



Remote control condition

The number of personnel allowed to control

The current online personnel number

Historical records

### Step 6. AP mode



Press the button for about 10 seconds, until LED flash slowly from quickly, then release the button, now WiFi plug work as AP mode.

### Step 7. Connect the AP mode operation method

Scan and connect the WiFi plug SSID in smartphone or tablet. The plug SSID comes with "WeConn"& plug Mac address. (for example, WiFi SSID: WeConn7cadd90659033), Click connect, when interface shows "connected" exit setup interface. Now turn on WeConn app. All operations remain same.

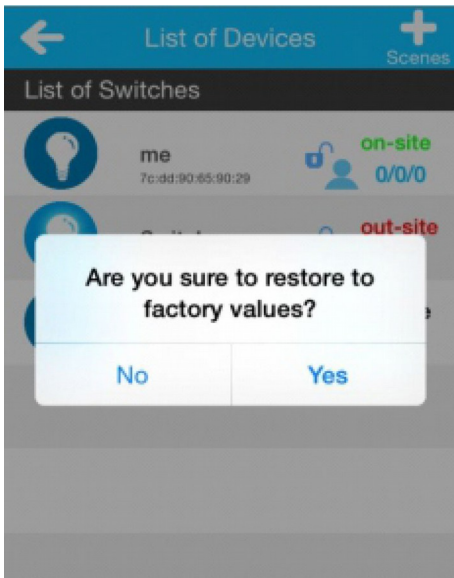
AP mode means direct connection(which is wireless remote control, not control through internet), under AP mode. Remote control is unavailable and distance can be controlled is limited.

#### **Remarkscheck following points if connection failed**

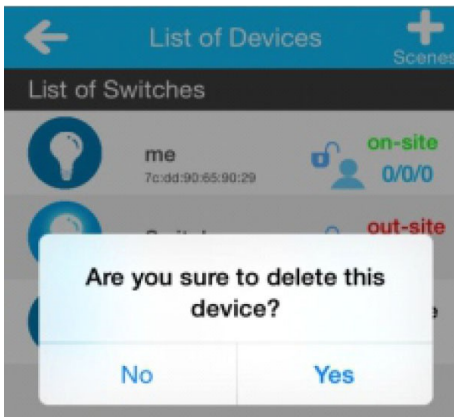
- 1) check if IP address of the WiFi router is full or not, see how many devices have connected to WiFi router already, or setup WiFi router' s connect website based on user manual, or contact WiFi router' s distributor, after-sales service, manufacturer etc.
- 2) Check if WiFi router is normally working, and it's internet speed situation
- 3) Check if distance too long so signal too weak to connect
- 4) Check if APP device have connected to the configuration WiFi router normally
- 5) Pull WiFi plug out, 5 seconds later, insert it in outlet and configuration, reset to factory default again.
- 6) Convert AP mode to client mode, only need to reset WiFi plug to factory default, then connection it to WiFi router and configuration again.



## APP control reset and delete operations WiFi plug

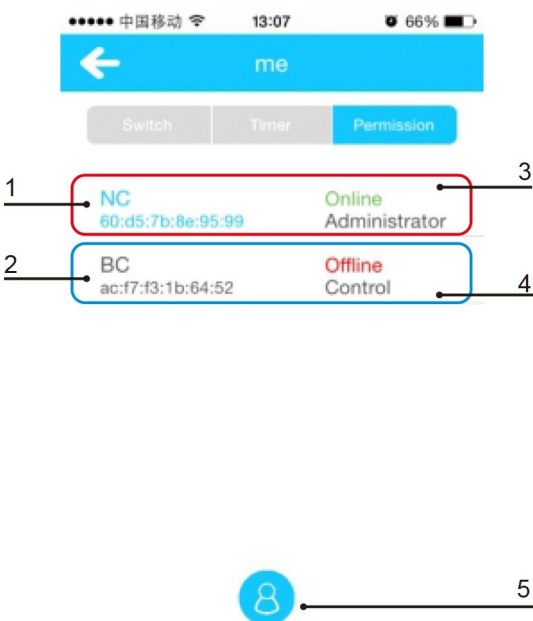


On device list choose "on-site" (online) device press and hold 2 seconds to see reset device info.



On device list choose "out-site" (offline) device press and hold 2 seconds to see delete device info.

## Control permissions settings



1. Device name
2. Mac address
3. The blue list represents your own APP device.
4. The black list represents APP devices form other
5. You're able to set as administrator (Remarks only one administrator for each WiFi Plug)

---

## Specification

| Protocol and plug Standard |  |
|----------------------------|--|
| Wireless Standard          | IEEE802.11b/g/n  |
| Operation Frequency        | ISM band, 2412~2483.5MHz (Depends on country region)             |
| Security                   | Mac Encryption; 62/128/152 bit WEP, WPA-PSK, WPA2-PSK, WEP, TKIP |
| Power Parameters           |  |
| Operating Voltage          | AC96V~264V(60Hz/50Hz)  |
| Output Power               | MAX 3500W  |
| Plug mating cycles         | > 5000   |