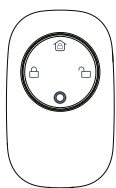


EN Remote Controller User Manual

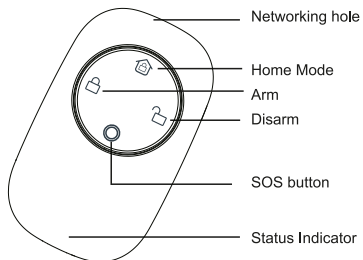
FS1RC



*Please read the user manual carefully before operation.



Product details



2

This is a smart remote controller, which can take home protection when going out. It has small fashionable design. Adopts super low power consumption ZigBee wireless networking design, ZHA standard protocol, support timely reporting and reminding if low power of battery, makes a longer battery life span.

Product introduction

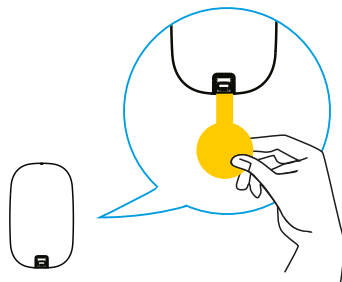
3

4

1. Working Voltage: DC3V (1* CR2032 button battery)
2. Standby Current: $\leq 3\mu A$
3. Alarm Current: $\leq 30mA$
4. Networking Mode: ZigBee Ad-Hoc Networking
5. Wireless Networking Distance: $\leq 100m$ (open area)
6. Working Environment: $-10^{\circ}C \sim +50^{\circ}C$
7. Environment Humidity: $\leq 95\%RH$
8. Dimension: $57.5*34.5*13mm$

Specification

5



•Remove battery insulation film to power on

1 2

Adding device

Select the Smart Hub from the list of devices to which you want to add a new device (sensor) or device with factory settings restored.

1. Click add devices on APP, entering networking mode.



When the LED in the control panel blinks blue, we confirm and go to pairing devices.

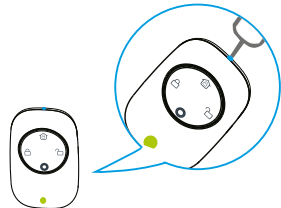


6

3

2. According to the tips on APP, keep pressing networking button, green LED flash quickly, tips appear on APP, green LED keep on for 3 seconds, network success.

7

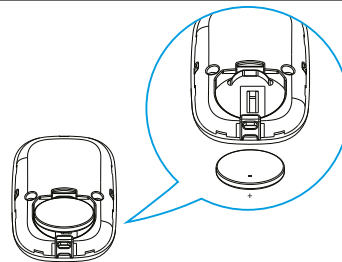


Delete device

In the application, click and hold the selected device, the "delete device" command will be displayed. After removed it, disconnect the network connection device by pressing and holding the pairing button. 6-fold LED blink in green means disconnection of the sensor network from the HUB.

4

Battery replacement



8

Please change battery correctly based on the positive and negative terminals of the battery. Pay attention to the environment protection, please deal with the waste battery correctly.

9



Download app: Ferguson Smart



* this device requires Ferguson Smart Hub unit to work, not included.

More info
www.ferguson-digital.eu
 and
wiki.ferguson.pl/en
 Thanks!

 **FERGUSON**
Smart Home
 intelligent home solutions don't have to be expensive



Safety

1. Ferguson Sp. z o.o. is not responsible for damages caused by improper use of the Ferguson Smart Home system.
2. Batteries attached to the device are not an integral part and not a subject to complaint. The manufacturer is not responsible for their proper operation.
3. Declared wireless ZigBee network's range is based on laboratory tests and applies to open space, keep in mind that the materials used in the construction of houses and flats, wall thickness and conditions of electromagnetic fields can cause a significant reduction in network coverage.

Your product contains batteries covered by the European Directive 2006/66/EC, which cannot be disposed with normal household waste. Please inform yourself about the local rules on separate collection of batteries because correct disposal helps to prevent negative consequences for the environmental and human health.



RoHS
 compliant

