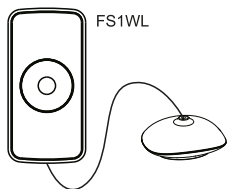


Water Leak Sensor User Manual



*Please read the user manual carefully before operation.



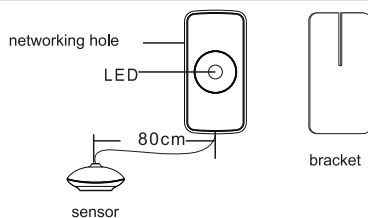
Product Introduction

This product adopts ZigBee wireless module. Super low power consumption circuit design makes longer battery lifespan. Separate design of body and sensor, efficiently prevent the influence resulted from high humidity. High precision and sensitivity, applicable for basement, machine room, hotel, pool, swimming pool, kitchen, bathroom and other places may have water leakage or water overflow.

2

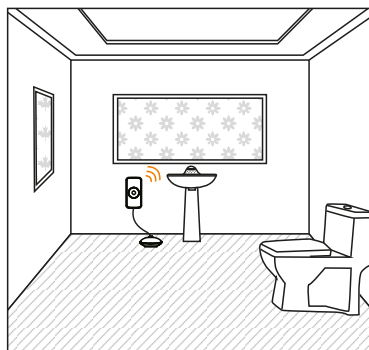
1. Working Voltage: DC3V (2x AAA battery)
2. Static current: $\leq 5\mu\text{A}$
3. Networking: ZigBee HA 1.2
4. Wireless networking distance: $\leq 100\text{m}$ (in the open area)
5. Working environment: $-10^{\circ}\text{C} + 50^{\circ}\text{C}$
6. Working humidity: 95%RH
7. Dimension: $76 * 36,6 * 16,5 \text{ mm}$
8. Sensor dimension: $28,3 \times 26,5 \times 12,2$

3

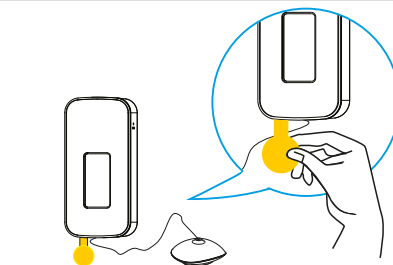


4

1. Install water leakage sensor at easy leakage area.
2. Don't install water leakage sensor at position of rainwater, lampblack, water vapor, etc.
3. Don't install water leakage sensor at water-immersed position.



5



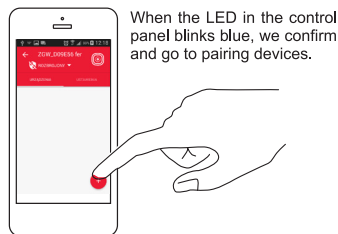
- Remove battery insulation film to power on.

6

Adding device

Select the Smart Hub from the list of devices to which you want to add a new device (sensor) or device with factory settings restored.

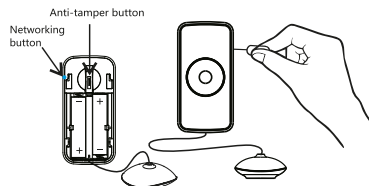
1. Click add devices on APP, entering networking mode.



7

3

2. According to the tips on APP, keep pressing networking button, green LED flash quickly, tips appear on APP, green LED keep on for 3 seconds, network success,



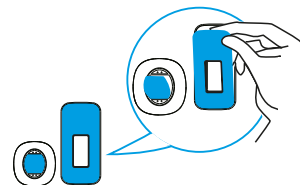
Delete device

In the application, click and hold the selected device, the "delete device" command will be displayed. After removed it, disconnect the network connection device by pressing and holding the pairing button. 6-fold LED blink in green means disconnection of the sensor network from the HUB.

8

LED indicator instruction of devices

Add network	Pressing network button for 2-5s, green LED flash (twice per second)
Quit network	Green LED flash six times (once per second)
Alarm	Red LED flash one time



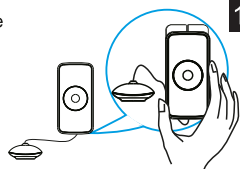
- Paste device in the area required after removing double-side tap on the back side.

9

4

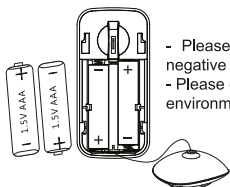
2

- Insert sensor body to the fixe hang bracket



10

- Please change the battery according to negative and positive of the battery,
- Please deal with waste batteries correctly for environmental protection.



5

FERGUSON
Smart Home

Download app: **Ferguson Smart**



11

1. Ferguson Sp. z o.o. is not responsible for damages caused by improper use of the Ferguson Smart Home system.
2. Batteries attached to the device are not an integral part and not a subject to complaint. The manufacturer is not responsible for their proper operation.
3. Declared wireless ZigBee network's range is based on laboratory tests and applies to open space, keep in mind that the materials used in the construction of houses and flats, wall thickness and conditions of electromagnetic fields can cause a significant reduction in network coverage.



Your product contains batteries covered by the European Directive 2006/68/EC, which cannot be disposed with normal household waste. Please inform yourself about the local rules on separate collection of batteries because correct disposal helps to prevent negative consequences for the environmental and human health.



Safety

12

FERGUSON
Smart Home
intelligent home solutions don't have to be expensive



More info
www.ferguson-digital.eu

and
wiki.ferguson.pl/en

Thanks!