

## User Manual

FS2CO



\*Please read the user manual carefully before operation.



## Product Introduction

This product is a smart carbon monoxide sensor, adopts super low power consumption Zigbee wireless networking technology, used for detecting carbon monoxide. Sensor adopts high performance electrochemical sensor, support sound and flash alarm. It has high stability, super low power consumption, little sensitivity drift and many other features. Free installation design, support instant bonding.



Sensor

Networking Hole  
LED indicator



Installation Base

2

1. Working Voltage: DC3V(CR123A Lithium Battery)
2. Static Current:  $\leq 20\mu\text{A}$
3. Alarm Current:  $\leq 60\text{mA}$
4. Alarm Sound: 85dB/1m
5. Alarm Sensitivity:
  - 30ppm 120mins alarm
  - 50ppm 60-90mins alarm
  - 100ppm 10-40mins alarm
  - 300ppm 3mins alarm
6. Networking: ZigBee Ad-Hoc Networking
7. Wireless Networking Distance:  $\geq 70\text{m}$  (open area)
8. Working Temperature:  $-10^{\circ}\text{C} \sim +50^{\circ}\text{C}$ ;
9. Environment Humidity: 95%RH
10. Dimension: 60\*60\*49.2mm

Technical Data

3

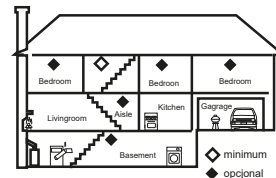
1. This product can not be used for detecting natural gas(methane), propane, butane and other combustible gas.
2. Clean once a month, users may use household vacuum cleaner and soft brush when cleaning.
3. Do not use cleanser or solvent wipe sensors, please avoid spraying air freshener, hair spray, oil paint or other aerosol near sensors.
4. Effective working life span is 5 years, suggest replace every 5 years no matter there is fault or not. (Battery life span is 3 years).
5. Please be attention when alarm happens. Shut-off valves immediately, opening the window, make sure indoor airiness. Besides using sensors correctly, users should strengthen the consciousness of fire protection.

4

1. Install the sensor in bedroom and living area or anywhere CO may leak, make sure each sleeping area can hear sound alarm when choose installation position.
2. Avoid suppressing or falling down sensors, keep sensors away from humid, high voltage, strong magnetic and children.
3. Do not suggest install sensors in garage, kitchen, boiler and places where sensor may false alarm. Do not install in dirty, dusty or greasy places, oily, dust or household chemicals may damage internal sensor, and make sensor can not work normally.
4. Sensors can support wall mounted or placing on the table, household and travel essential.

5

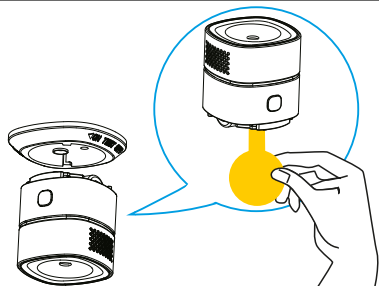
To increase safety factors in single-layer house, suggest to install at least a sensor in each bedroom and install a sensor at 6m from chimney and gas fixture. To increase safety factors in multi-layer house, suggest to install at least a sensor in each bedroom, install at least one sensor in basement. Please install a sensor at 6m from chimney and gas fixture.



## Installation Drawing

Installation

6



- Anticlockwise rotating the bracket out from the installation base, then remove the battery insulating strip to make detector on power.

7

## Adding device

Select the Smart Hub from the list of devices to which you want to add a new device (sensor) or device with factory settings restored.

1. Click add devices on APP, entering networking mode.

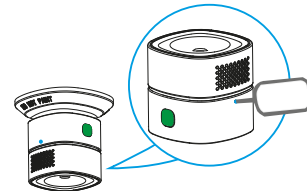


When the LED in the control panel blinks blue, we confirm and go to pairing devices.



8

2. According to the tips on APP, keep pressing networking button, green LED flash quickly, tips appear on APP, green LED keep on for 3 seconds, network success,

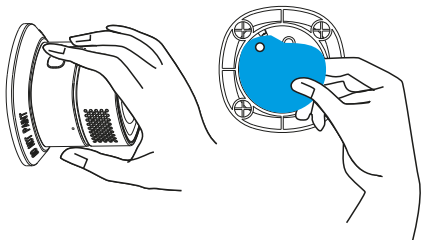


## Delete device

In the application, click and hold the selected device, the "delete device" command will be displayed. After removed it, disconnect the network connection device by pressing and holding the pairing button. 6-fold LED blink in green means disconnection of the sensor network from the HUB.

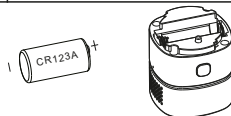
9

Partly



- Screw the sensor into bracket, please remove the double sided a dhesive membrane on the installation base, and stick on the wall

Status	LED indicator	Alarm
Test	Red LED flash 4 times in 10 seconds	"Dl" four times
Warm up	LED flash alternately in three colors and then go out	"Dl" one time when power on
Fault	Yellow LED flash twice	"Dl" twice in 10 seconds
Low power	Yellow LED flash one time	"Dl" one time every 10 seconds
Super Low Power	Yellow LED keeps on	"Dl" one time every 10 seconds
Usage Expiration Date	Yellow LED flash twice	"Dl" twice every 10 seconds



- Please replace battery correctly, following the battery positive and negative electrode

- Please take following advices for reference if sensors can not work normally:
1. Replace battery in time, if voltage too low and reach effective life span. (Check table 1 for status reference)
  2. Please clean sensor if the fault resulted from dust or oil stain ( Check table 1 for status reference).
  3. Make sure sensors screw into the base correctly.



- Press test button on the product for 3 seconds, shows in above picture, till alarm happens ( check table 1 for status reference). Suggest test sensor at least once a week. Please pay attention once alarm happens



Download app: Ferguson Smart



\* this device requires Ferguson Smart Hub unit to work, not included.

1. Ferguson Sp. z o.o. is not responsible for damages caused by improper use of the Ferguson Smart Home system.
2. Batteries attached to the device are not an integral part and not a subject to complaint. The manufacturer is not responsible for their proper operation.
3. Declared wireless ZigBee network's range is based on laboratory tests and applies to open space, keep in mind that the materials used in the construction of houses and flats, wall thickness and conditions of electromagnetic fields can cause a significant reduction in network coverage.



Your product contains batteries covered by the European Directive 2006/66/EC, which cannot be disposed with normal household waste. Please inform yourself about the local rules on separate collection of batteries because correct disposal helps to prevent negative consequences for the environmental and human health.



Safety



intelligent home solutions don't have to be expensive



More info  
[www.ferguson-digital.eu](http://www.ferguson-digital.eu)  
 and  
[wiki.ferguson.pl/en](http://wiki.ferguson.pl/en)  
 Thanks!