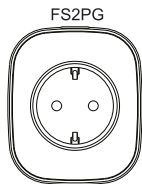


Smart WiFi Plug User Manual



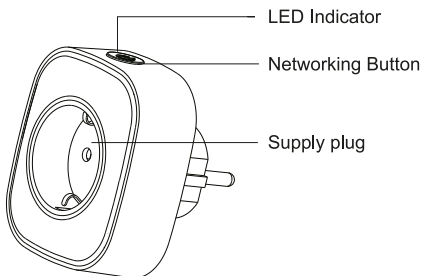
*Please read the user manual carefully before operation.

The guide picture is for reference only, please in kind prevail.



2

Product Details



The smart WiFi metering plug, WiFi wireless signal transmission technology, can be controlled by APP remotely. It also supports power metering and timing switch (need to combine with APP), and the function of power, voltage, current overload protection. Plug and play, install without tools.

Product Introduction

3

4

1. Working Voltage: 100VAC~240VAC
2. Average Power Consumption: <0.5W
3. Maximum Load: 3000W
4. Measured Voltage Range: 110VAC-240VAC
5. Measured Current Range: <16A
6. Measured Power Range: <3000W
7. WiFi Standard: IEEE 802.11b/g/n 2.4GHz
8. Wireless Networking Distance: Up to 100 meters (in open area)
9. Working Environment: -10°C ~ +50°C
10. Working Humidity: ≤ 95%RH
11. Outline Dimension: 79.6*67.9*72mm

Technical parameters

Configuration

Download APP

Scan following QR code, download Ferguson Smart APP, and create a user account.

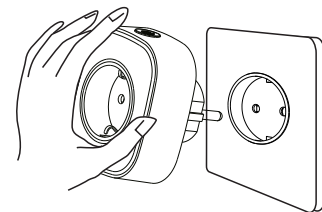


Download app: **Ferguson Smart**



5

Add new device



Insert Smart WiFi Plug into home plug to power on, meanwhile, make sure smartphone is connected to your home WiFi.

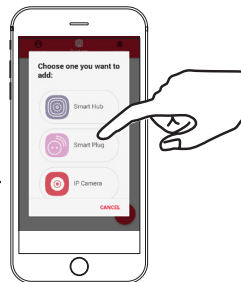
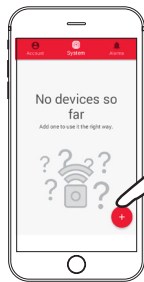
6

Open Ferguson Smart APP, create an account, confirm your account by clicking on the email link and log in.



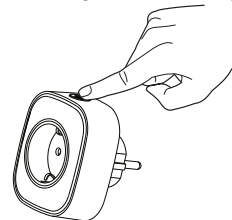
7

Later in the application you can select "⊕" to add the device to the application. Then select "Smart Plug".



8

Press network button on the side of your Plug and hold it for 7 seconds until button blinks red, which means gateway is preparing for setting network. Then select "Confirm" in the App. Based on the indication in App to input WiFi password (the one smartphone is already connected) to set WiFi. Red LED keeps on for 2 seconds and turns off after setting WiFi successfully.



9

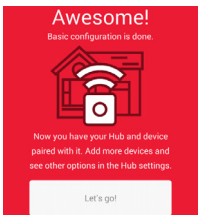
When the App finds available Plugs in the network, you can select the Plug from the list.

Now your Plug is in the Settings Mode. Now you can customize your Plug and confirm.

10

Basic configuration is done!

You can start using your new Ferguson Smart Plug.



Description of LED Indicator Status

Light	State	Operation
Red LED	Flash quickly	Networking.
	Flash slowly	Supply plug is powered off while network disconnected
	Light on	Supply plug is powered on while network disconnected
Blue LED	Light on	Supply plug is powered on while network connected
Light off		Supply plug is powered off while network connected

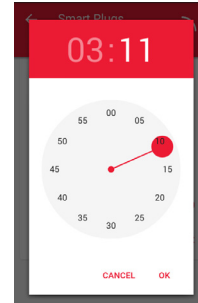
11

Functions

Countdown

You can set Countdown. This works as follows:

- If The Plug is turned on you can set it when you want to turn it off.
- If The Plug is turned off you can set it when you want to turn it on.



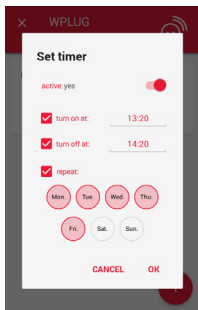
12

Timers

You can set Timers when you want your plug to be turned on or off automatically.

The Timer function can be successfully used for Simulation of Presence in an empty building.

13



1. Ferguson Sp. z o.o. is not responsible for damages caused by improper use of the Ferguson Smart Home system.
2. Batteries attached to the device are not an integral part and not a subject to complaint. The manufacturer is not responsible for their proper operation.
3. Declared wireless ZigBee network's range is based on laboratory tests and applies to open space, keep in mind that the materials used in the construction of houses and flats, wall thickness and conditions of electromagnetic fields can cause a significant reduction in network coverage.

14

R&TTE

Hereby Ferguson Sp. z o.o., declares that the device is in compliance with the essential requirements and other relevant provisions of Directive 2014/53/EU.

You can find the Declaration of Conformity on www.deklaracje.ferguson.pl

This product has been designed, tested and manufactured according to the European R&TTE directive 2014/53/EU.



Safety



Risk of electric shock - do not open. This notice warns the user not to open the device housing. The housing may be opened solely by authorized service technicians.

16



More info
www.ferguson-digital.eu

and
wiki.ferguson.pl/en

Thanks!

17