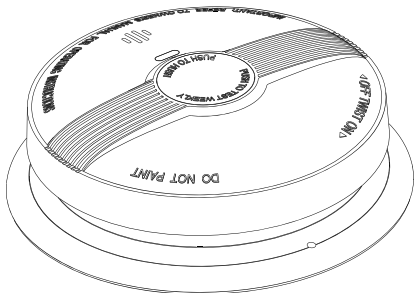




GSM Smoke Detector

User Manual

autonomous, photoelectric GSM Smoke Detector (FS2SD)



IMPORTANT! PLEASE READ THESE INSTRUCTIONS CAREFULLY AND KEEP THIS USER MANUAL FOR THE FUTURE.

This user manual contains important information on the operation of the alarm device. If you are assembling this equipment for use by others, you must leave this manual - or a copy of it - to the end user. Device manufacturer Ferguson Sp. z o.o. is not liable for damages resulting from use contrary to the intended use.

P The FS2SD photoelectric sensor is effective at detecting slow, smoldering fires that burn for hours before a flame develops, as well as violent fires that quickly consume flammable materials and spread rapidly.

i The smoke detector is equipped with a GSM communication module that communicates with the cloud in Poland. Data transmission takes place via the mobile telephone network, therefore the device will work in places where there is no WiFi connection or the connection is unstable. If smoke is detected, the user will receive a notification from the application. Read more in Chapter 11. MOBILE APP.

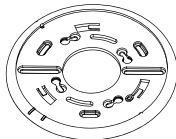
CONTENTS OF THE PACKAGE

PART NAME	QUANTITY
SMOKE DETECTOR	1 PC
MOUNTING BRACKET	1 PC
SCREW	2 PCS
ANCHOR PLUG	2 PCS
USER MANUAL	1 PC

test and mute
button



smoke detector



mounting bracket



screws



anchor plug



user manual

1. THE MOST IMPORTANT FEATURES

The device has two batteries

- one lithium-ion battery built into the device, supplying power to the alarm module, which can last up to 10 years,
- the second battery supplies power to the communication module, and can be replaced, and it can last up to 3 years.

LED diode

- light signal approximately every 53 seconds to confirm that the device is powered.

Alarm module low battery warning

- sound signal (beep) approximately every 53 seconds when the battery level is low.

Pausing an alarm (mute mode)

- muting the alarm sound signal by pressing and holding the test button for 3 seconds when a non-smoke gas (e.g. steam) triggers a false alarm. In this mode, the red LED diode lights up every 10 seconds to remind you that the smoke detector has been muted. The sensor will automatically reset after 10 minutes.

Loud 85 decibel piezo electric alarm

- automatically resets after the emergency has passed.

Included accessories

- allow for easy installation in the chosen place.

2. IMPORTANT INFORMATION ABOUT SAFETY! PLEASE READ THESE INSTRUCTIONS AND KEEP THEM.

- Do not remove or disconnect the communication module battery to mute a false alarm. In this case, the detector will lose its alarming features. Ventilate the area around the detector to mute the detector or press and hold the test button for 3 seconds.
- The test button thoroughly checks all features of the smoke detector. Do not use any other test method. Test the smoke detector to ensure proper operation.
- If you need help installing the smoke detector, contact a qualified electrician/ monter/ chimney sweeper. Comply with all local and national electrical and building codes when installing.
- The best solution is to place smoke detectors in every room and on every floor of the building. Life-threatening smoke may not reach the detector if it is located in a remote place or encounters barriers (e.g. doors). In such cases, the smoke may not reach the alarm device in time to alert household members/ staff members. The sensor detects a fire in the room or area where it is installed.
- The volume of the alarm sound is adjusted to the average hearing capacity to warn household members/ staff members of a potential danger. However, there may be limiting circumstances in which a person may not hear the alarm (e.g. outside or indoors noise, use of earplugs, use of drugs or alcohol, hearing impairment, etc.). A person hearing the alarm must respond quickly to it to reduce the risk of injury or death from a fire. If the household member/ staff member is deaf, install special smoke detectors with lights or vibration devices.
- The smoke detector only sounds an alarm when smoke is detected. The sensor checks the composition of the air for the presence of particles that may come from the combustion process. The device does not detect high temperature, flames or gas. This smoke detector is designed to give an audible warning of a developing fire. In the event of violent fires involving explosions and others smoke may not reach the detector quickly enough to allow for safe evacuation.
- The smoke detector does not guarantee 100% protection of life/ health or property against fire. Smoke alarms are not a substitute for your insurance benefits. The sensor should be replaced after approximately 10 years. device weekly and replace every 10 years.

3. WHERE TO PLACE THE SMOKE DETECTOR

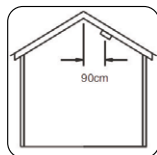
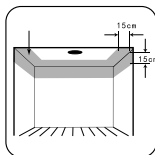
- In a minimum home configuration, smoke detectors should be placed between the bedroom and potential fire locations such as the living room and kitchen. In one-story, one-bedroom houses, the smoke detector should be installed in the hallway, as close to the sleeping area as possible. To ensure the early recognition of dangers, no smoke detectors should be located more than 3m from a door from a sleeping room. It may be necessary to install more than one smoke detector, especially if the hallway is more than 15 m long. In single-story houses with two separate bedrooms, at least two smoke detectors are required, one near each sleeping area. In multi-story houses, sensors should be installed on the ground floor between the staircase and all rooms where the fire may spread. Install at least one smoke detector on each floor in communication areas that form part of the escape route (usually hallway and mezzanines).
- For the best protection, smoke detectors should be installed in every room in the home, except those listed in Chapter 4 LOCATIONS TO AVOID.
- Smoke detectors should be installed in communication areas at a distance of no more than 7.5 m from the farthest wall, no more than 7.5 m from the door to any room where fire may start, and no more than 7.5 m from the next smoke detector.
- The best location for the sensor is usually in the center of a room or hallway. If it is necessary to place the smoke detector on the wall, always place the detector's sensor element 150 mm (0.15 m)

to 300 mm (0.3 m) below the ceiling above the level of doors and other openings.

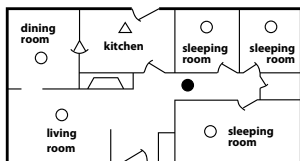
- In rooms with sloped, canopy or gable ceilings, install smoke detectors on the ceiling at a distance of 900 mm (0.9 m) from the highest point of the ceiling. Be aware that the “dead zone” at the top of the ceiling may prevent smoke from reaching the alarm in time and thus not provide an early warning of the danger.
- Read Chapter 4 LOCATIONS TO AVOID.

ATTENTION:

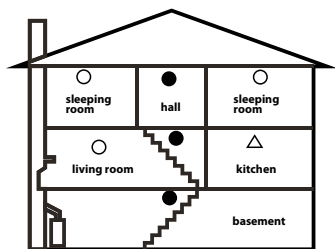
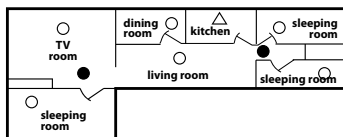
Smoke detectors are intended mainly for private single-family apartments. For use in other cases, consult the manufacturer.



one floor, one sleeping area



one floor, more than one sleeping area



two-story building

- Smoke detectors for limited protection
- Additional smoke detectors for better coverage
- △ Heat sensors

4. LOCATIONS TO AVOID

It is not recommended to place smoke detectors:

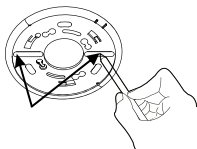
- In air flows from fans, radiators, doors, windows, etc. that could draw smoke away from the detector.
- In areas with high humidity, such as bathrooms and showers, or where the temperature exceeds 39°C (100°F) or drops below 5°C (40°F), as high humidity can trigger a false alarm.
- At the highest point of the ceiling. The “dead zone” at the top can prevent smoke from entering the detector and prevent early warning.
- On the ceiling at a distance of less than 300 mm (0.3 m) from the edge of the wall.
- In places with a lot of insects. After getting inside the device, small insects may affect the performance of the device.
- In very dusty or dirty places. Dirt and dust can accumulate and reduce the performance of your device.
- At a distance of 300 mm (0.3 m) from lighting fixtures or room corners.
- In places where it would be dangerous / impossible to perform routine testing or maintenance of the equipment.
- On weakly insulated surfaces (walls or ceilings).
- Near objects such as ceiling decorations that may obstruct the path of smoke to the detector.
- At a distance less than 1500 mm (1.5 m) from fluorescent lamps.

5. HOW TO INSTALL A SMOKE DETECTOR

- Break the locking pins out of the mounting bracket. These pins are used to protect the detector against tampering.



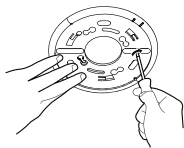
- Draw a 100 mm (10 cm) horizontal or vertical line on the ceiling or wall in the area where the smoke detector is to be located (see chapter 3 WHERE TO PLACE THE SMOKE DETECTOR).



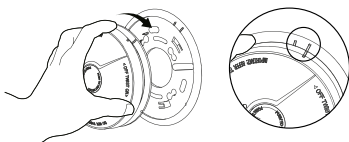
- Place the mounting bracket in the desired position. Line up the two longest mounting slots. Mark the location in the center of each mounting slot.

- Drill holes at the marked points with a 5mm drill bit.

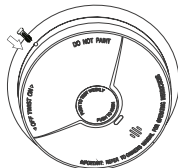
- Insert the wall plugs and screw the mounting bracket to the desired position. Do not over tighten the screws as this will distort the mounting bracket. This element should be firmly attached to the selected surface.



- Line up the short marking line on the sensor housing with the mounting bracket, then rotate the sensor clockwise until the line on the sensor aligns with the long marking line on the mounting bracket.



- To prevent possible tampering, insert the security pins into the cutout on the edge of the alarm device after securing the detector. NOTE: They can only be inserted while the smoke detector is attached to the mounting bracket. Attaching the safety pins will make it difficult to remove the sensor from the mounting bracket and, consequently, block access to the rear panel of the sensor (on/ off button).



- Check the smoke detector. See section 8 SMOKE DETECTOR TESTING.

6. LED INDICATORS AND SOUND SIGNALS

STATUS	LIGHT SIGNAL	SOUND SIGNAL
Normal operation	Red LED flashes every 53 seconds	None
Test status	Red LED flashes quickly	Short, fast beeps
Alarm status	Red LED flashes quickly	Short, fast beeps
Mute mode	Red LED flashes every 10 seconds	None
Low battery	Red LED flashes every 53 seconds	One beep every 53 seconds
Failure	Red LED flashes every 53 seconds	Two beeps every 53 seconds

7. FALSE ALARM CONTROL

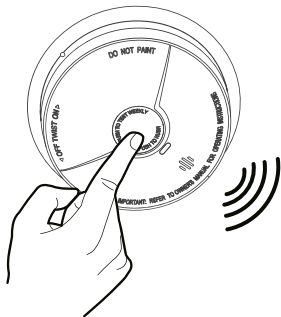
The smoke detector has a false alarm control feature that mute this type of alarm for up to 10 minutes when activated. To use the false alarm check: Press and release the test button during an alarm you consider to be false. This operation will mute the main alarm. This means that the smoke detector is in false alarm control mode. If the smoke detector does not go into false alarm mode and continues to emit loud sound signal, or if it initially goes into false alarm control mode and then goes off an alarm, smoke is too intense and a dangerous situation may occur, take emergency action.

8. SMOKE DETECTOR TESTING

WARNING!

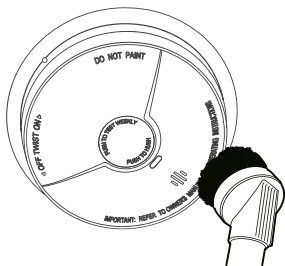
- Test each installed smoke detector to make sure they are properly installed and working.
- The test button checks all sensor features thoroughly. Do not use an open flame to test this smoke detector. You can ignite and damage the smoke detector.
- Test smoke detectors regularly when returning from vacation or when no one has been at the facility for several days.
- Stay within arm's length of the smoke detector while testing. The alarm emitted by the sensor is loud to alert household members/ staff of a potential danger and may be harmful to hearing.

- Press and release the test button to test the sensor. The sensor will emit a loud and short beep.
- If the fire alarm does not sound, check if the smoke detector is properly secured to the mounting bracket.
- NOTE: REPLACE THE SMOKE DETECTOR IF THE TEST FEATURE DOES NOT WORK CORRECTLY AFTER FOLLOWING THE ABOVE PROCEDURES CAREFULLY.
- DANGER: If the alarm sounds, and the smoke detector is not being tested, the device detects smoke.
- ALARM SOUND REQUIRES IMMEDIATE ATTENTION AND ACTION!



9. MAINTENANCE AND CLEANING

- This device has been designed to require as little maintenance as possible. However, there are some steps you need to take to make it work properly.
- Clean the smoke detector at least once a month or depending on the environmental conditions in which it is installed. Gently vacuum the outside of the smoke detector with a soft vacuum cleaner brush. After maintenance work, check the operation of the smoke detector. Never use water, cleaning agents or solvents as these may damage the device.
- If the smoke sensor becomes contaminated with excessive dirt and/ or dust and cannot be cleaned, the device must be replaced immediately to avoid false alarms.
- Move the device to a different location if it produces frequent false alarms. For details, see Chapter 4 LOCATIONS TO AVOID.
- When the battery level drops, the smoke detector will emit one short beep every 53 seconds (this is a low battery warning of the alarm module). Replace the smoke detector immediately to continue protection.



10. TROUBLESHOOTING

PROBLEM	SOLUTION
Smoke detector not responding	Check that the detector is properly attached to the mounting bracket
Red LED flashes and the alarm beeps once every 53 seconds	Low battery REPLACE SMOKE DETECTOR IMMEDIATELY!
Red LED flashes and smoke detector beeps twice every 53 seconds	Clean alarm device OR REPLACE OR REPAIR!
The smoke detector emits false alarms intermittently	1. Clean the device - see chapter 9 MAINTENANCE AND CLEANING. 2. Move the smoke detector to another location. See Chapter 3 WHERE TO PLACE THE SMOKE DETECTOR.

11. MOBILE APPLICATION

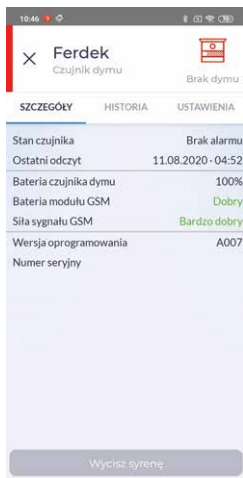
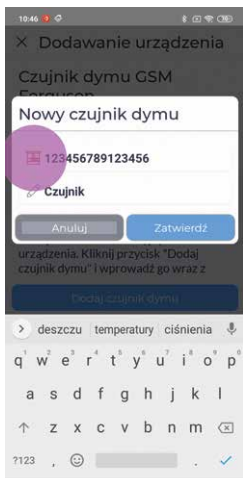
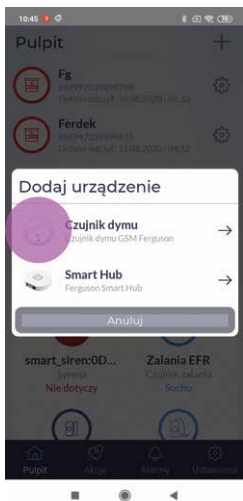
- Download the Ferguson Home mobile application from the Play Store (Android) or the App Store (iOS) depending on the mobile device you have.
- After installing the application on your device, start the process of adding the GSM Smoke Detector (FS2SD-GSM) to your account in the Ferguson Home system.

Start the mobile application and log in (or create an account). After starting it, use the “+” (plus) symbol to start the process of adding the smoke detector.

An internet connection is required to receive real-time notifications with fire alerts in the app.



- Select GSM smoke detector from the list.
- Read the information on the screen. Follow the procedure described in the information on the screen.
- After adding the GSM Smoke Detector to your account, you will have access to its settings.



SIMPLIFIED DECLARATION OF CONFORMITY

Producer: Ferguson Sp. z o.o.,
ul. Dworska 1, 61-619 Poznań
Name: FS2SD-GSM

Device type: Smoke detector

The above-mentioned product complies with Directive 2014/53/EU of the European Parliament and of the Council of 16 April 2014 on the harmonization of the laws of the Member States relating to the making available on the market of radio equipment and repealing Directive 1999/5/EC.

Full Declaration of Conformity for download at: <https://ferguson-digital.eu/deklaracje-zgodnosci/>



produced in PRC for

Ferguson sp. z o.o.

ul. Dworska 1, 61-619 Poznań, Poland

www.ferguson-digital.eu