

Smart Vibration Sensor User Manual

M422-8Ever1.2

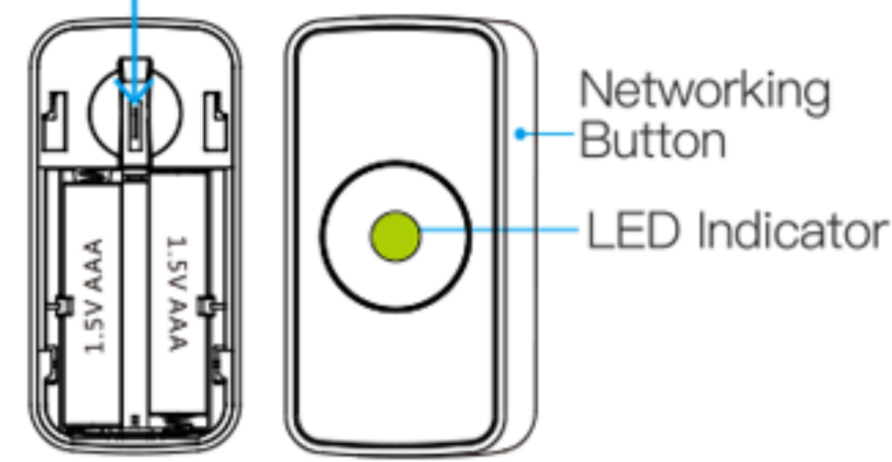


*Please read the user manual carefully before operation.

1 Product Description

This smart wireless vibration sensor, with advanced design, adopts 3-axis accelerometer, is used to detect if there is abnormal vibration and issue alarms. The installation is very convenient and flexible. It's suitable to be mounted in different places such as residential houses, safe boxes, drawers, doors, windows for security concerns. The user can set appropriate sensitivity according to different environments.

Anti-tamper Switch



Smart Vibration Sensor

1

2 Technical Parameters

1. Working Voltage: DC3V (2xAAA)
2. Networking: Zigbee
3. Wireless Networking Distance: $\leq 70\text{m}$ (in the open area)
4. Working Temperature: $-10^{\circ}\text{C}\sim+50^{\circ}\text{C}$
5. Working Humidity: $\leq 95\%\text{RH}$ (no condensation)
6. Detection Radius: $\leq 3\text{m}$ (The medium is concrete)
7. Dimensions: $76\times 36.6\times 16.5\text{mm}$

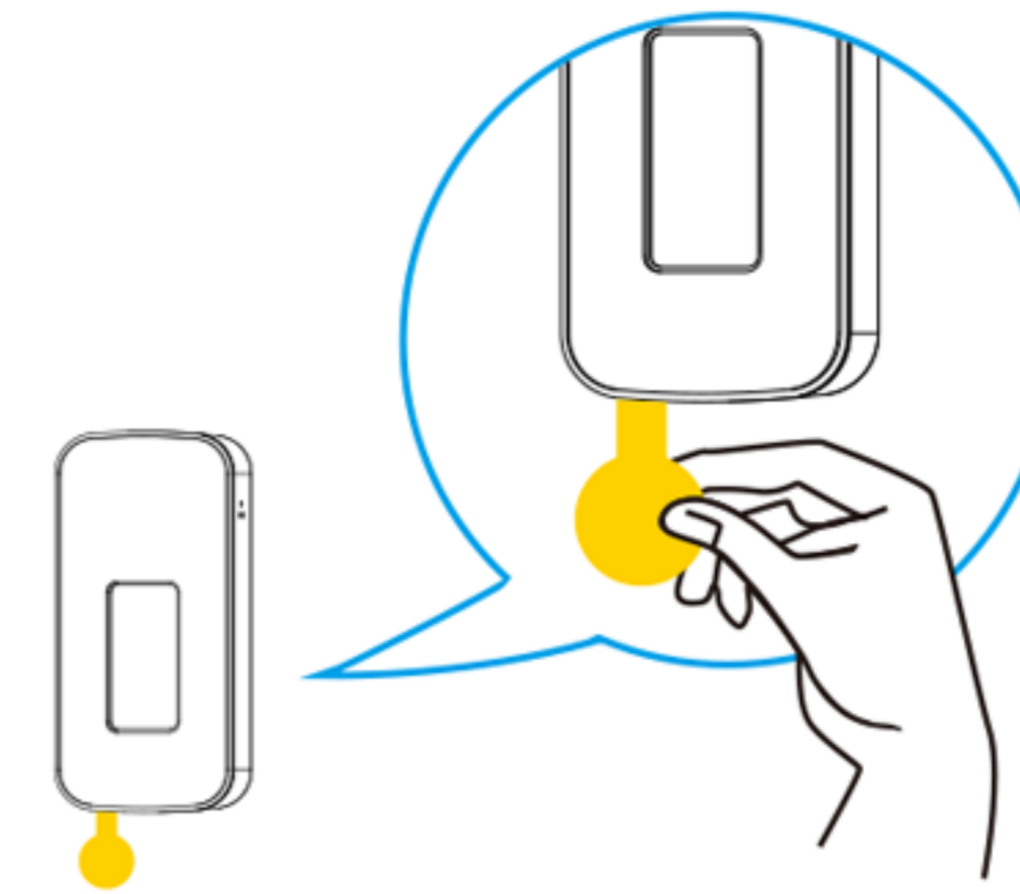
2

3 Function Illustrations



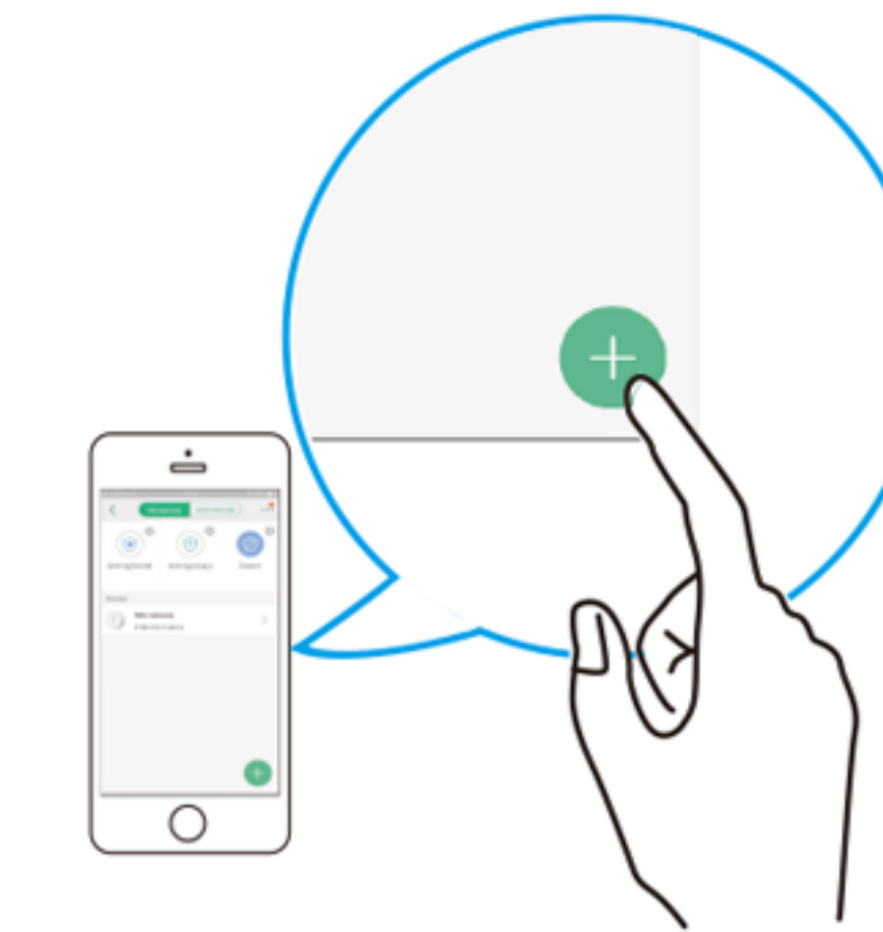
3

4 Networking Method



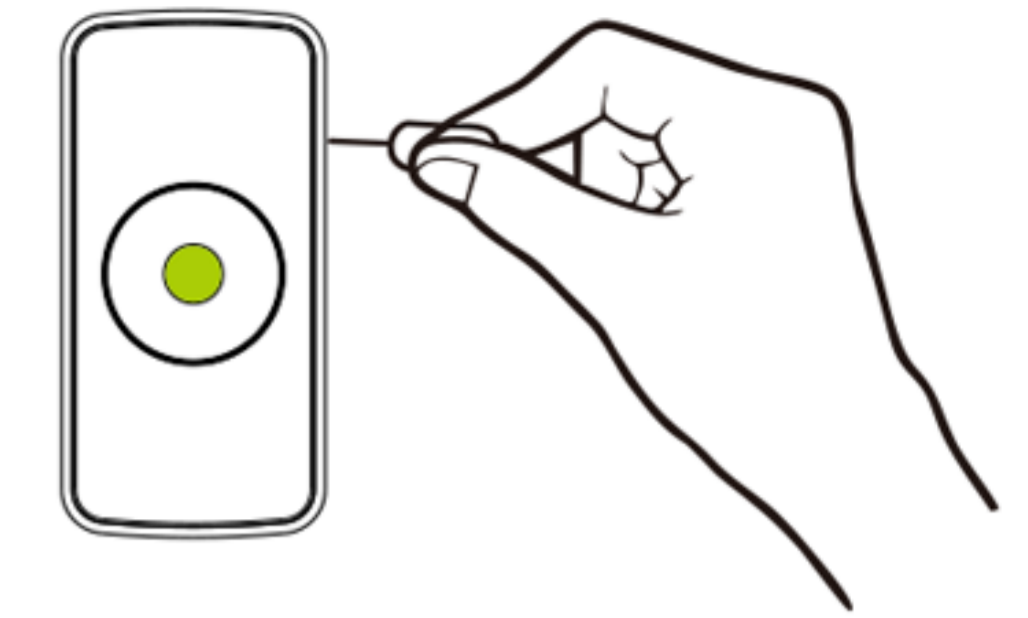
- Remove the battery insulation strip to power on the sensor.

4



- Open the APP and enter into gateway, then tap "+" to add smart vibration sensor according to the instructions.

5



- Add Device: According to APP prompt, press and hold the networking button for 2 seconds, until the green light flashes quickly, then the device will show in the APP.
- Delete Device: Press and hold the networking button for 5 seconds, until the green light flashes slowly for 3 seconds, which indicates that the device is deleted successfully.

6

LED Status Description

Light	Status
Green Light	1. Green light flashes quickly (5 times per second), while adding device.
	2. Green light keeps on for about 3 seconds, when device is added successfully.
	3. Green light flashes slowly for 6 times, when adding device is failed.
Red Light	1. Green light flashes slowly for 3 seconds (2 times per second) when device is deleted.
	The LED flashes once when detects vibration.

7

5 Sensitivity Setting



- Enter into smart vibration sensor, and tap "... " to set the sensitivity of the sensor.

8

- Select the appropriate sensitivity: high sensitivity, medium high sensitivity, medium low sensitivity, low sensitivity.

- Test environment: wooden floor, $\Phi 25\text{mm}$ glass ball.

a. High sensitivity: the glass ball falls from the height of 1 meter, and a vibration alarm will be generated within a radius of 300cm.

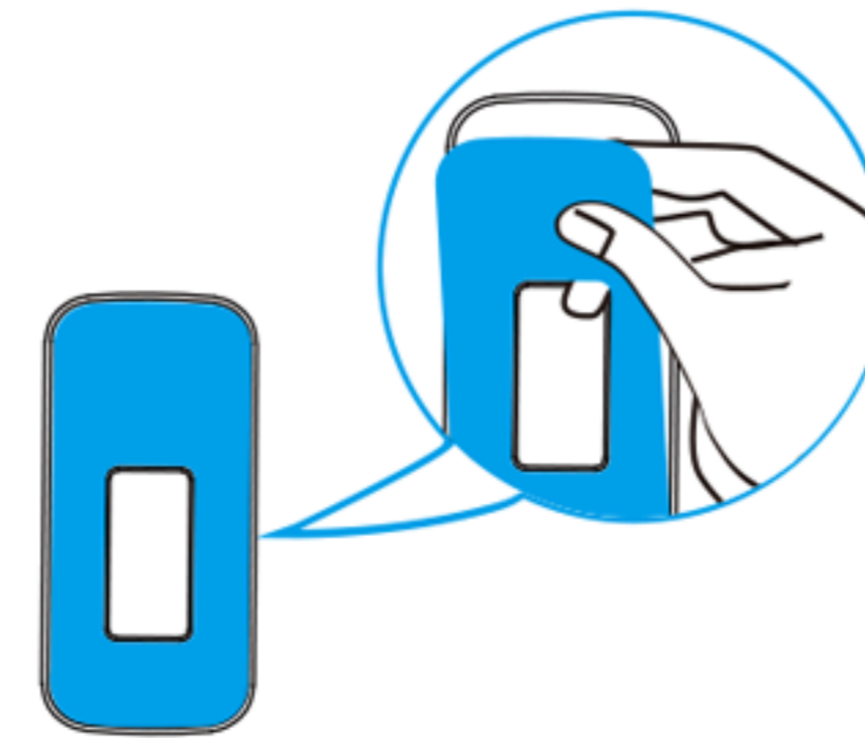
b. Medium high sensitivity: the glass ball falls from the height of 1 meter, and a vibration alarm will be generated within a radius of 140cm.

c. Medium low sensitivity: the glass ball falls from the height of 1 meter, and a vibration alarm will be generated within a radius of 100cm.

d. Low sensitivity: the glass ball falls from the height of 1 meter, and a vibration alarm will be generated within a radius of 40cm. (Note: the values are for reference only, in different environments, the actual values will differ from the listed one)

9

6 Installation

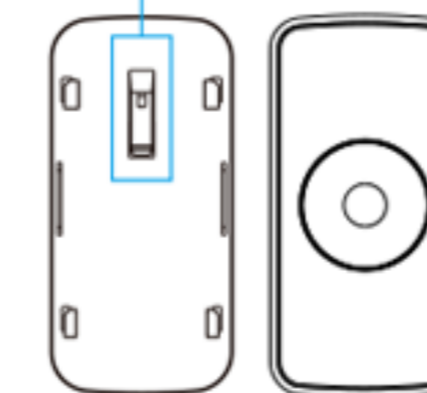


- Remove the film of double-side tape of the bracket.

10



Bracket buckle should be upward

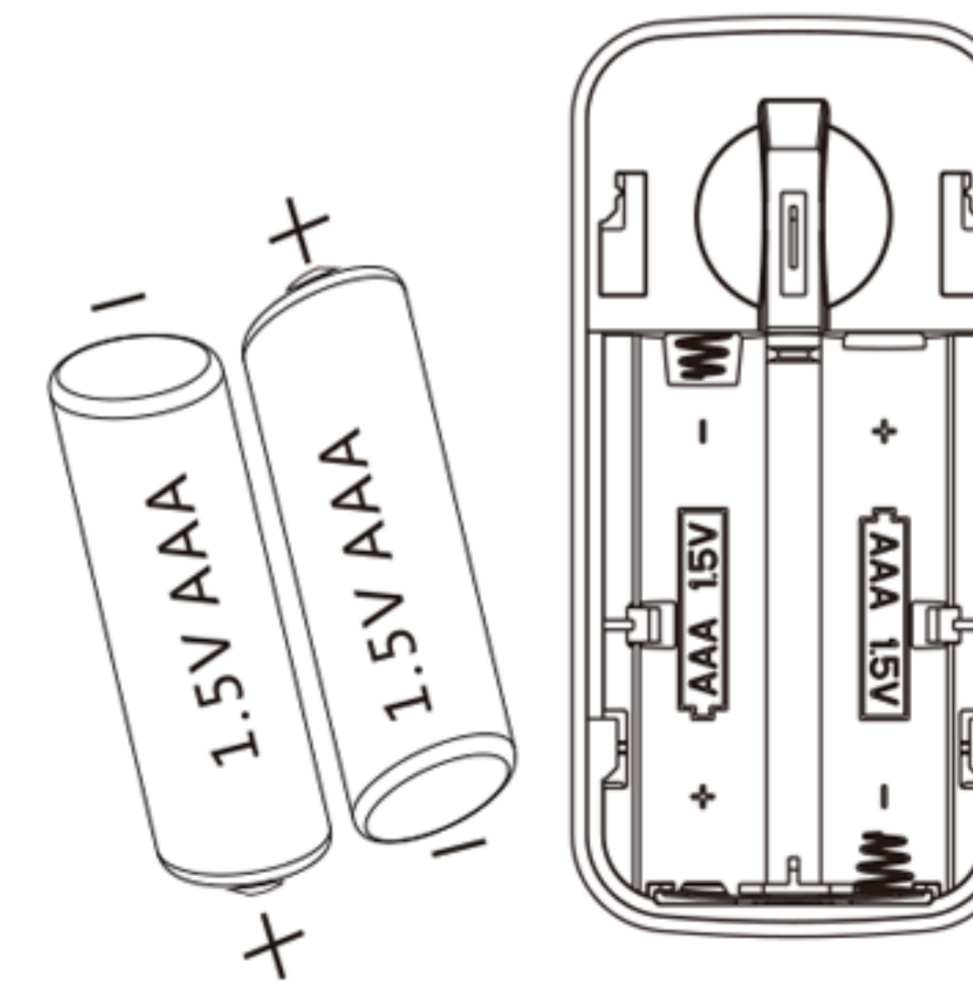


bracket

- Make sure the bracket buckle to be upward, and paste the bracket to the appropriate place, then mount the sensor onto the bracket.

11

7 Battery Replacement



- Please change the battery according to the anode and cathode of the battery.
- Please deal with waste batteries correctly for environmental protection.

12

Notes:

* The pictures shown are for reference only.

* As the technology is constantly updated, if actual operation is inconsistent with the user manual, the final interpretation rights is reserved to the manufacturer.