

EN

User Manual SmartEYE200 IP Cam

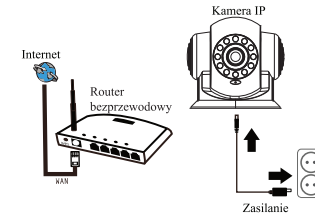


*Please read the user manual carefully before operation.

Specification

System	P2P	Free, Plug and Play, no port forwarding
Video	Pixel	2 Megapixels
	Frame rate	1~25fps(50Hz), 1~30fps(60Hz)
	Resolution	(1920*1080), VGA(640*352), QVGA(320*176)
	Lens	4,8mm
	WB&BLC	Auto
Night vision	IR	8pcs LED lights, Wavelength 850nm
	Distance	IR distance 8m
Audio	Talk	Two way audio
Structure	Motor Control	Build-in 2 motors
	IR-CUT	Auto switch, without color cast
	Pan & Tilt	Horizontal: 355°, Vertical: 120°
Network	Wire	RJ-45 10/100Mb
Wireless	WiFi	WiFi IEEE 802.11B/G/N
	Antenna	2,4GHz
Recording	Micro SD size	Max. 128GB
	Protocol	Compatible with Onvif 2.1
Power	Power	5VDC 2A
	Frequency	50Hz / 60Hz
Environment	Assembly	Indoor
	Temperature	-10 ~ 60°C
	Humidity	10% - 90% RH
Packing	Dimension	Product size: 112x90x116mm
	Weight	0,5kg

Start-up



1. Near the wireless router, plug on the camera to the power supply (via the supplied power adapter);
2. When you hear melody tone from camera, it means that camera is waiting for receiving WiFi signal;
3. Then set up an Internet connection through the application on your phone.

Note: When camera is in initial state, there is melody tone coming out from it. Internet connection setup, connect to the router by LAN cable or power off may turn off the melody.

Application

Scan QR Code, download "Ferguson Smart" application, register a user account. The app is available for Android on Google Play and iOS in the App Store.



Configuration

1. Run the application and log in,

Note: The smartphone must be connected to your home 2.4GHz WiFi network.

2. Connect the camera to the power and wait for it to start, you will hear a melody.
3. In the application select "+" to add more devices to system.
4. Click on "IP Camera".

5. Select the camera you want to add from the list and confirm your selection.

6. In the next window, enter the UID number. You can enter it manually or scan the QR code on the back of the camera with camera on your phone and confirm,

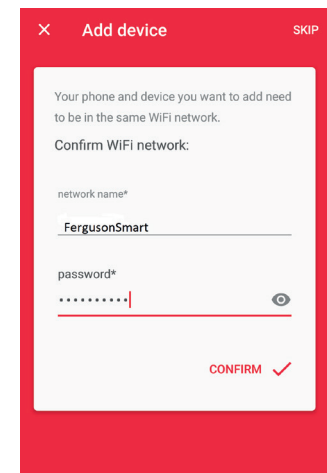
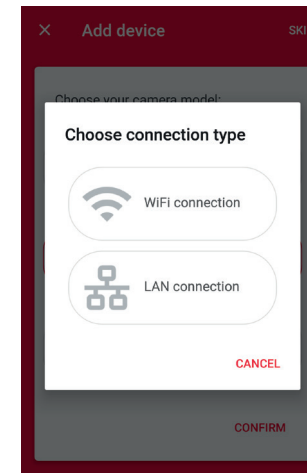
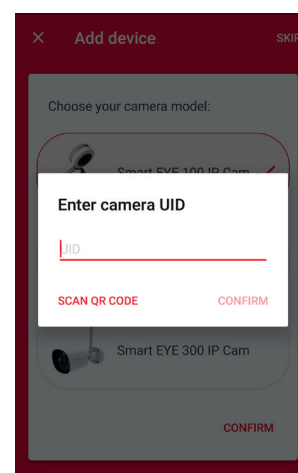
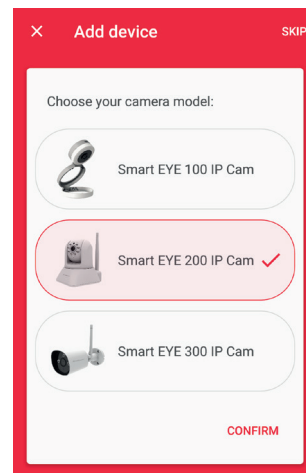
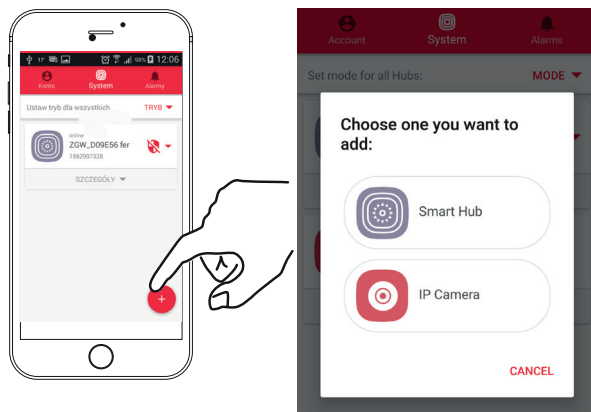
7. Choose the type of connection.

A) If the camera is playing a melody and the camera is not connected via LAN cable to the router, select "Wifi connection" and go to the next point.

B) If you don't hear melody and the camera is connected by LAN cable to the router, select "LAN connection" and confirm the camera name. The camera is ready to work.

8. In the next step enter the WiFi password with which our smartphone is connected and confirm again.

9. The pairing process occurs. Wait for its completion (this process does not occur during "LAN Connection").

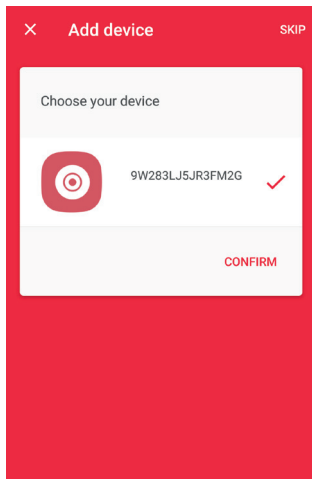


10. When the pairing is complete, the app will detect the added camera. Select and confirm.

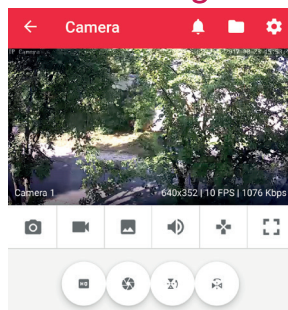
The camera is ready to work.

By clicking on the selected preview from the list, we go to the window with additional options.

Note: If is a problem with pairing your device through a WiFi connection, try disabling the 802.11n network in your router.



Handling



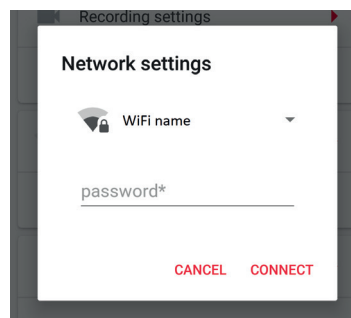
In the camera view is several features:

- Photo - click to take a photo and save it in phone's memory.
- Camera - click to start recording, click again to end recording and save in phone memory.
- Microphone - Holding while speaking, transmits sound to the camera.
- Control - keys to rotate the camera. The direction of the camera can also be changed by swiping your finger on smartphone screen.
- View full screen image.
- Quality - select the quality of the projected image. The higher the quality, the more delayed the transmitted image and sound.
- Environment (recommended setting "inside 50Hz").
- Camera settings.
- Saved events.
- Gallery of photos and videos stored in phone's memory.

WiFi settings

As the camera has already been configured using a LAN cable, you can configure WiFi connection.

To do this, go to camera settings and select "Network settings". The app detects WiFi to which the phone is connected.



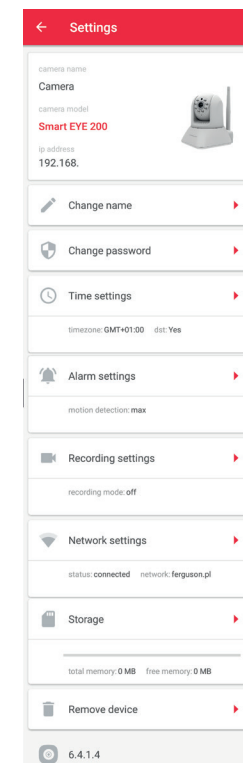
Enter the WiFi network password and select "Connect".

If the configuration is successful, the connection occurs within one minute. Then unplug the LAN cable and restart the application to establish a new connection to the camera.

Camera settings

By opening the camera settings we are able to make basic camera settings such as:

- current IP address of the camera.
- change camera name,
- change the access password to the camera,
- setting the time zone and daylight saving time,
- setting the motion detection sensitivity, enabling this feature will result in notification from the application detecting motion by the camera. The higher the sensitivity, the more events will be recorded,
- Recording settings (continuous recording - means 24-hour recording in the loop. When the memory is full, the new data is written to the oldest file, in alarm - when motion is detected or off). The recording function only works if the SD card is installed,
- WiFi settings - possibility to change network and password WiFi,
- SD card memory and the ability to format it,
- delete camera,
- version of camera software,



Camera support by web browser

Browser support allows you to access advanced camera settings not available from phone's application. One of the more interesting features is setting the camera to send a photo when it detects motion to an email address.

Ferguson IP camera can be operated by web browser on Port 81, or any computer program that supports IP cameras.

To configure the camera by a web browser, your computer must be connected to the same local network (LAN) as the camera is. Next start program "IPCameraSearch", which can be downloaded from our website. This program will search all cameras connected to your local network and indicate their IP addresses. By clicking on the "open", you will be redirected to the browser where you enter your camera login and password (default login: admin, password: admin).

Knowing the IP address of the camera, you can also enter an IP address with port 81 in your browser.

Example: <http://192.168.1.25:81>

You can reset the camera to the factory settings by pressing and holding the RESET button on the back of the camera for 8 seconds.

More information can be found on our page www.wiki.ferguson.pl

Safety measures

We request that you read the instruction manual and recommendations set forward therein.

- In order to avoid an electric shock, never open the housing. Damage to the warranty seal shall void the warranty.
- After prolonged use, it is normal that the unit temperature will rise.
- Please use the accessories provided by the manufacturer.
- Before commencing maintenance or installation work, disconnect the device from the mains. Do not clean the device with alcohol or liquids containing ammonia. If necessary, clean it with a soft, lint-free cloth wetted with a gentle solution of water and soap.

Downloadable software

Ferguson has taken every effort to provide users with software updates in order to ensure that the parameters of the device are up to date. Ferguson reserves itself the right to amend, change or modify the software used in the device as it shall choose and without prior notification.

The latest version of the software is available on the website <http://www.ferguson-digital.eu>

About the user manual

Ferguson Sp. z o.o. has made every effort to provide the most current information about its products. Ferguson Sp. z o.o does not grant any guarantee as to the contents of the present instruction manual and disclaims any implied guarantees concerning market value or suitability for specific purposes. The information contained herein is an instruction intended to enable the correct usage and maintenance of the receiver. Ferguson Sp. z o.o. reserves itself the right to introduce amendments, changes or translations of the instruction manual without prior notification thereof. For this reason, we recommend you regularly visit our website in order to obtain the latest information.

Hereby Ferguson Sp. z o.o. declares that the device is in compliance with the essential requirements and other relevant provisions of Directive 2014/53/EC. You can find the Declaration of Conformity on www.deklaracje.ferguson.pl. This product has been designed, tested and manufactured according the European RED directive 2014/53/UE.

