

1. What's in the box?



Ariva HDplayer 110



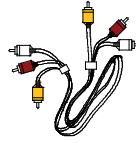
User manual



Remote Control
Unit



2x AAA batteries



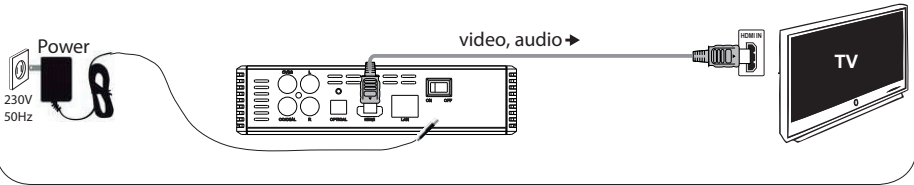
A/V cable



AC power
adaptor

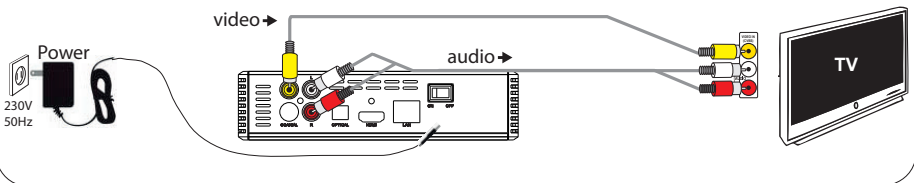
2. Connect - basic audio/video connections

HDMI (Best quality, cable not supplied)



or

CVBS / Composite (Normal quality) and stereo audio



Quick Start Guide

3. Setup

- 1 Press **⏻** to turn on.
- 2 Press **SETUP** to enter Setup menu wizard (Setup-Assistant) will appear.
- 3 Select **🇬🇧** System tab then "Menu Language" option and press **OK**.
- 4 Use **▲▼** keys to select a language option in the menu and press **OK** to confirm.
- 5 Adjust other settings if needed
- 6 Press **SETUP** to exit.

4. Use

- 1 Copy multimedia files to USB memory



- 2 Connect USB memory to USB port in Ariva player
- 3 Use **◀▶▲▼** keys to navigate in the menu. Choose category Music, Photo or Movie then select USB from the devices list and select file that you want to play
- 4 Press **OK** to start playback.
- 5 To stop playback, press **STOP**.

CAUTION!

Refer to the user manual for more information.

Introduction

- 1 Product Overview
- 1 Supplied accessories
- 1 Safety Information
- 2 User manual
- 2 Software upgrade
- 3 Symbols used on the device
- 3 Setup

Connections

- 4 Connecting to a TV
- 5 Connecting the power cord
- 6 Optional: Connecting to an Stereo System
- 6 Optional: Connecting Digital AV Receiver
- 7 Optional: Connecting a supported USB devices
- 8 Optional: Connecting Ethernet network

Functional Overview

- 9 Front, Side and Rear panels
- 10 Remote Control Unit

Getting Started

- 11 Step 1: Inserting batteries into the Remote Control
- 11 Step 2: Setting up the TV
- 12 Step 3: Setting language preference

Major functions

- 13 Upscaling
- 13 Playable Content
- 14 Basic playback controls
- 14 Operations for video playback
- 16 Playing pictures or audio files
- 17 File copy

Setup Menu Options

- 18 Audio setup menu
- 18 Video setup menu
- 19 Network setup menu
- 20 System setup menu
- 20 Misc setup menu

Troubleshooting

Specification

Glossary

Product Overview

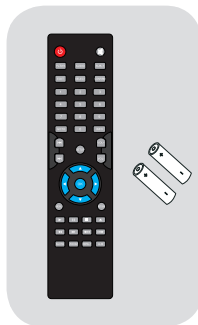
Thank you for purchasing the Ariva HDplayer 110. This user manual provides step-by-step instructions for installing and using your new HD media player. Ariva HDplayer 110 is a compact, high-definition (HD) (Wi-Fi Net supporting) USB 2.0 media player that attaches to an entertainment unit through a variety of audio/video interfaces and supports playback of major audio, video, and image file formats. Player supports high-definition video playback of up to 1080p through an HDMI connection or standard definition for TVs with lower capabilities. High-fidelity digital audio is supported from an optical interface (Toslink). Two USB ports are available to connect USB storage devices. The included remote control lets you quickly browse through your media library and configure settings.

Supplied accessories

Remote Control

and

two AAA batteries



Safety Information

- Please observe all warnings and instructions on the equipment and contained in these operating instructions.
- Please carefully read this user's manual before using the device.
- To avoid electric-shock hazards, do not open the cabinet, refer servicing to qualified personnel only. If cabinet is opened warranty will be invalid.
- Please switch off completely the device during thunder, during abnormal phenomenon, before cleaning it and in case it remains out of service for a long period.
- Do not expose the device under the sunlight. And keep it away from the heat source or humid environments. Do not block ventilation holes of the device so that air can circulate freely.
- Please place the device in horizontal and stable conditions, keeping it away from vibrating.
- If device is moved from warmer place to a colder one some problem might occur. Please switch off the device and turn it on after 1 or 2 hours.
- Keep the device away from flower vases, tubs, sinks, etc., in order to avoid damaging the equipment. Do not touch power supply with wet hands.
- Don't put any objects on the device.
- Be sure to turn the device off and disconnect the AC power cord before cleaning the receiver surface. If the surface is dirty, wipe clean with a cloth which has been dipped in a weak soap/and/water solution and wrung out thoroughly, and then wipe again with a dry cloth.
- Do not connect cables while power is plugged.

- Do not use damaged cables for connections: you could cause fires.
- Please switch off completely the device while making all connections.
- The product purchased is a sophisticated electronic device which is not suitable for children under 18 years.
- We do not assume responsibility for damages caused to people or object, deriving from use of the device made by people under 18 years.

User manual

Ferguson has used all the available means to ensure the latest information regarding its products. Ferguson does not give a warranty regarding the contents of this User Manual and waives any implied warranties regarding market value or fitness for specific purposes. The information contained herein provide guidelines allowing the operation and maintenance of the receiver.

Ferguson reserves the right to make changes, corrections or to translate the User Manual without giving prior notice of such changes. Therefore, it is recommended that users visit our website regularly to receive the latest information.

- **To obtain the most current user manual**

Visit the Ferguson website www.ferguson-digital.eu to check the availability of the latest version of user manual. Please visit the FAQ section to.

Software upgrade

Periodically Ferguson will issue software upgrade to enhance your user experience.

- **To download and install the latest software to the player**

Visit the Ferguson website www.ferguson-digital.eu to check the availability of the latest software upgrade.

Symbols used on the device

The caution risk of electrical shock - do not open symbol

This symbol tells you that you are not allowed to open the device. Only authorized (service) technicians are allowed to open the box.

The CE mark

This mark tells you that the device is following the provisions of Council Directive 89/336/EEC on the approximation of the laws of the Member States relating to the electromagnetic compatibility and the provisions of Council Directive 73/23/EEC and 93/68/EEC on the approximation of the laws of the Member States relating to low voltage and electrical safety.

The double insulation symbol

This symbol tells you that the device is electrically safe within the normal use of the device as stated in the safety chapter.

The RoHS mark

This mark tells you that the device is following The Directive on the Restriction of the Use of Certain Hazardous Substances in Electrical and Electronic Equipment 2002/95/EC (commonly referred to as the Restriction of Hazardous Substances Directive or RoHS)

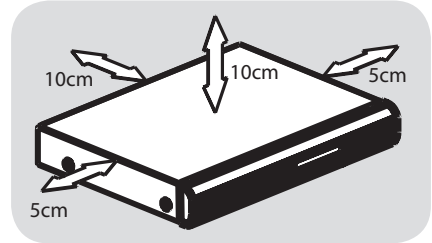
Setup

Finding a suitable location

- Place the set on a flat, hard and stable surface. Do not place the set on a carpet.
- Do not position the set on top of other equipment that might heat it up (e.g. receiver or amplifier).
- Do not put anything under the set (e.g. CDs, magazines).
- Install this system near the AC outlet and where the AC power plug can be reached easily.

Space for ventilation

- Place the apparatus in a location with adequate ventilation to prevent internal heat build up. Allow at least 10 cm clearance from the rear and the top of the set and 5 cm from the left and right to prevent overheating.

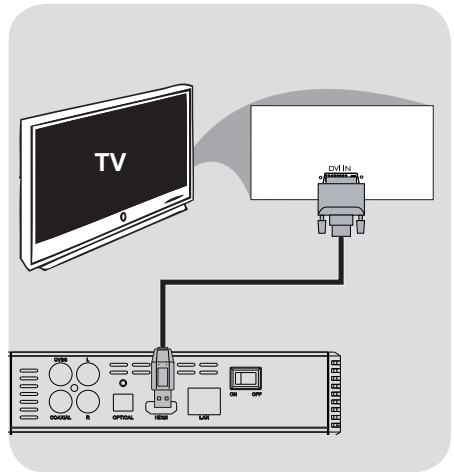
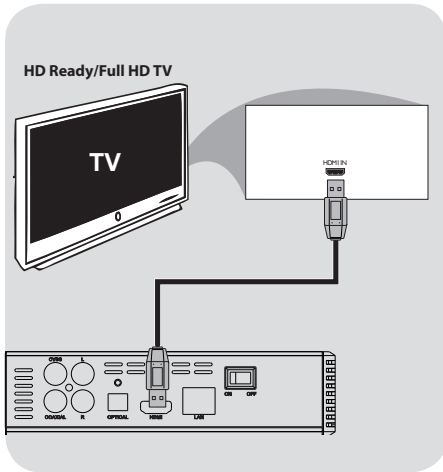


Avoid high temperatures, moisture, water and dust

- Apparatus shall not be exposed to dripping or splashing.
- Do not place any sources of danger on the apparatus (e.g., liquid filled objects, lighted candles).

Connections

Connecting TV



IMPORTANT!

- You only need to make one video connection from the following options, depending on the capabilities of your TV system.
- Connect the player directly to the TV.
- When there is no picture on screen press repeatedly TV-SYS key.

Using HDMI (High Definition Multimedia Interface) sockets

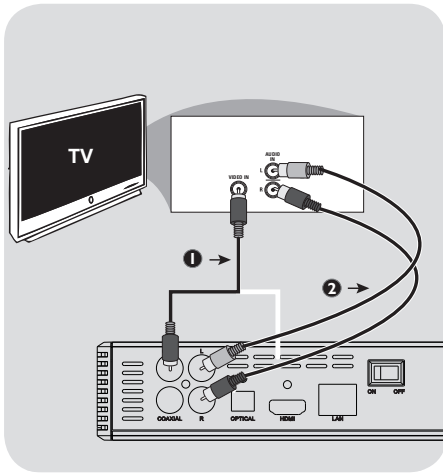
- HDMI transfers an uncompressed digital signal for the clearest sound/image quality.
- It has plug and play capability using only one cable for both audio/video output.
- ① Use a HDMI cable (not supplied) to connect the DVD player's HDMI to HDMI IN on the HDMI TV.
 - It may take a while for the Ariva player and input device to communicate and initialise.

Using DVI (Digital Visual Interface) sockets

- If your TV has a DVI IN socket, you need a HDMI-DVI adapter cable to connect the HDMI socket on the Ariva player.
- This HDMI-DVI cable has only video output capability.
- ① Use a HDMI-DVI cable (not supplied) to connect the Ariva player's HDMI to DVI IN on the DVI TV.

Helpful hint:

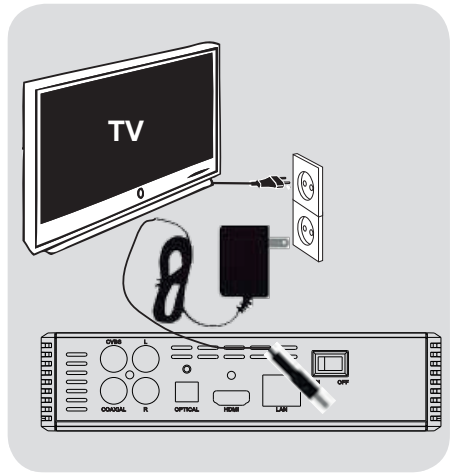
- To hear sound from the Ariva player, use one of the audio connections.



Using Composite Video Jacks (CVBS)



- 1 Use the composite video cable (yellow) to connect the Ariva player's CVBS(VIDEO) jack to the video input jack (or the labeled as A/V in , Video In, Composite or Baseband) on the TV.
- 2 To hear the sound of this Ariva Player through your TV, use the audio cables (white/red) to connect AUDIO OUT (L/R) jacks of the Ariva player to the corresponding AUDIO IN jacks on the TV.

Connecting the power cord



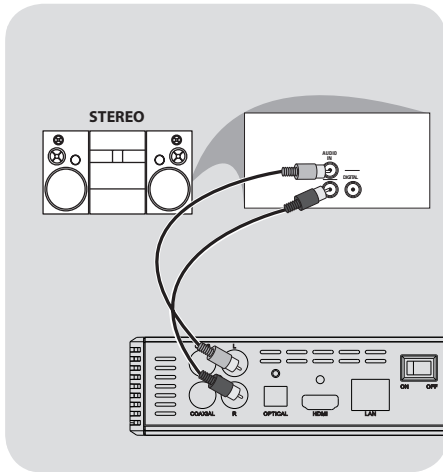
After everything is connected properly, connect the power cable to the media player's DC connector, and then plug the opposite end into an AC power outlet. The media player powers up automatically.

Never make or change any connections with the power switched on.

Press **POWER**  on the RCU. Standby-On diode  will change color on the front panel.

Connections

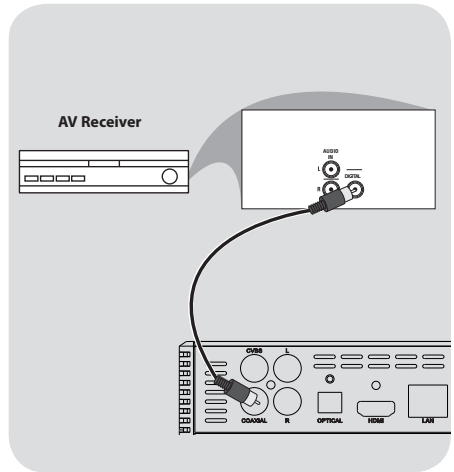
Optional: Connecting to an Stereo System



Stereo system has Right/Left Audio In Jack

- 1 Select one of the video connections (CVBS VIDEO or HDMI) depending on the options available on your TV.
- 2 Use the audio cables (white/red) to connect **AUDIO OUT (L/R)** jacks of the Ariva Player to the corresponding AUDIO IN jacks on the stereo system.

Optional: Connecting Digital AV Receiver



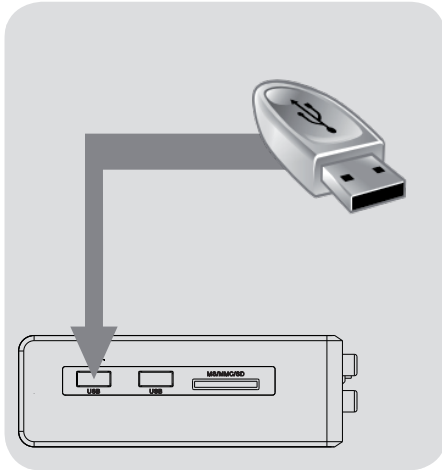
Receiver has a PCM, Dolby Digital, or DTS decoder

- 1 Select one of the video connections (CVBS VIDEO or HDMI) depending on the options available on your TV.
- 2 Connect the COAXIAL or OPTICAL jack of the Ariva player to the corresponding Digital Audio In jack on your Receiver (*cable not supplied*).
- 3 Set the Ariva Player's Digital Output to SPDIF LPCM or SPDIF RAW depending on the capabilities of your Receiver.

Helpful hint:

– If the audio format of the Digital Output does not match the capabilities of your receiver, the receiver will produce a strong, distorted sound or no sound at all.

Optional: Connecting a supported USB devices



Using USB port for playback

- ❶ Connect the supported USB device directly to the USB port on the side panel (as shown on the above illustration).
- ❷ Navigate through menu in order to view the files stored in the supported USB device.
- ❸ You have to stop playback before removing the supported USB device from the USB port.

Helpful hints:

- The USB port supports playback of all supported multimedia files.
- Not all portable audio/video players and digital cameras are supported.
- External hard disk drives without separate power supply are not supported and may not work.
- If the USB device does not fit into the USB port, a USB extension cable is required.

Connecting DVD drive

- ❶ Connect the supported USB DVD drive directly to the USB port on the side panel (as shown on the above illustration).
- ❷ Navigate through menu in order to view the files stored on the DVD disc.
- ❸ You have to stop playback before removing the USB DVD drive from the USB port.

Helpful hints:

- The USB port supports playback of all supported multimedia files.
- Not all USB DVD drives are supported.
- Only format ISO9660 disc are supported
- Drives without separate power supply are not supported and may not work.

Connecting WiFi dongle

You can only connect dongles with 8187B, 8709 Realtek chip.

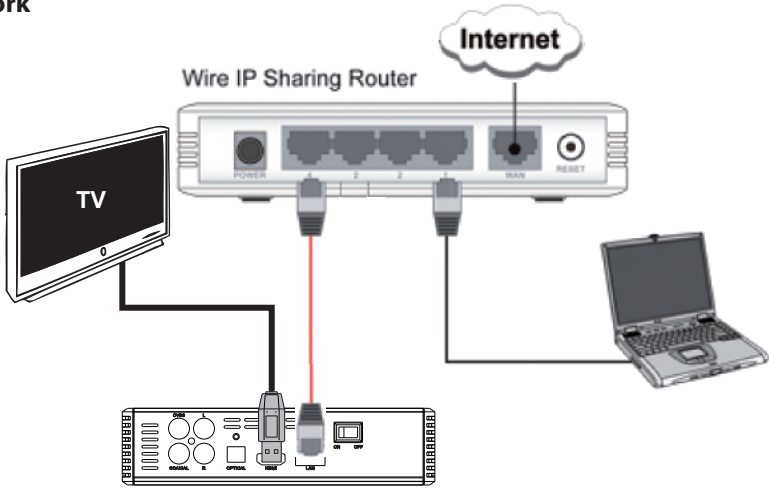
- ❶ Connect the supported WiFi dongle to the USB port on the side panel (as shown on the above illustration).
- ❷ Configure in menu WiFi connection.
- ❸ You have to disconnect WiFi network before removing the WiFi dongle from the USB port.

Helpful hints:

- WiFi networks are usually slower than cable (Ethernet) networks. It may affect playback performance.

Connections

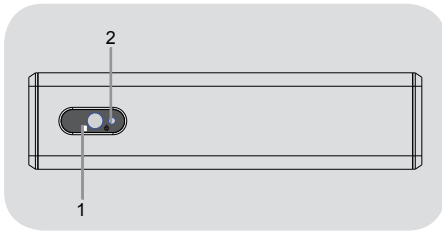
Optional: Connecting Ethernet network



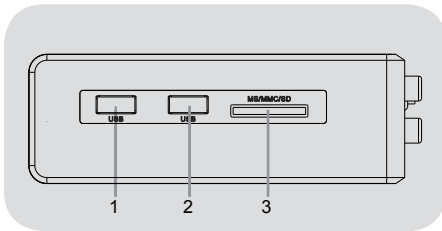
Ethernet 100Mb network

- 1 Connect the Ethernet RJ-45 cable to LAN port as shown on the above illustration.
- 2 Wait a moment until DHCP will configure network connection.

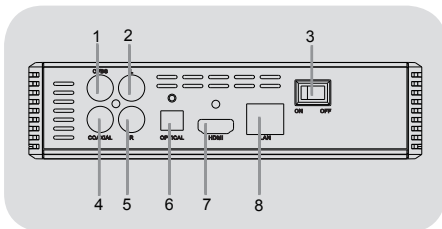
Front, Side and Rear panels



- ❶ **POWER Display** - Shows information about the current status of the Player
- ❷ **IR Sensor** - Point the remote control towards this sensor



- ❶❷ **USB port** - Input the supported USB device
- ❸ **Card reader** - Input the supported flash card. SD, MMC or MS



- ❶ **CVBS (Video Out)** - connect to CVBS video input of a TV
- ❷ **L Stereo Audio Out** - connect to audio left input of a stereo system
- ❸ **Power** - power switch
- ❹ **COAXIAL (Digital Audio Out)**- connect to coaxial audio input of an amplifier
- ❺ **R Stereo Audio Out** - connect to audio right input of a stereo system
- ❻ **OPTICAL (Digital Audio Out)** - connect to coaxial audio input of an amplifier
- ❼ **HDMI** - Audio and video output socket for the high definition television set
- ❽ **Ethernet**- Network Interface (LAN)
- ❾ **DC Power Supply Input** - connect AC power adaptor (use only supplied adaptor)

Functional Overview

Remote Control Unit



- POWER** - Turns the player on or switches it to standby mode
- MUTE** - Turn on/off sound
- TV-SYS** - Toggle Video Output Modes and resolution (HDMI, CVBS)
- AUDIO** - Selects an audio track or language (DVD/avi/mkv)
- SUB-T** - Selects a subtitle file / subtitle moving / font change /time adjustment
- EDIT** - Rename or delete file in file browser
- SELECT** - Select files/folders to copy/move in File Copy mode
- CONFIRM** - Not used at the moment
- Alphanumeric keypad 0-9** - Selects numbered items in a menu
- GOTO** - Start playback from a designated point
- INFO** - Display information on the screen during playback
- Skips to the next file
- Skips to previous file
- SETUP** - Enters or exits system setup menu
- VOL + -** - Increase / decrease the volume
- Cursor buttons for moving left, right, up, down.
- OK** - Confirms an entry or selection
- MENU** - Enter or exits the main menu
- RETURN** - Return to playback / folder up in file browser
- PLAY** - Starts playback
- PAUSE** - Pauses playback
- Stops playback
- EJECT** - Eject disc (you need external DVD drive connected to USB port)
- Fast forward
- Reverse search
- Jump back or forward during playback
- SLOW** - Slow the normal play motion
- ZOOM** - Enlarge a picture on the TV screen
- REPEAT** - Selects various repeat modes
- A-B** - Selects fragment for repeat mode

Step 1: Inserting batteries into the Remote Control

- 1 Open the battery compartment.
- 2 Insert two batteries type R03 or AAA, following the indications(+ -) inside the compartment.
- 3 Close the cover.

Using the Remote Control to operate the Player

- 1 Aim the Remote Control directly at the remote sensor (IR) on the front panel.
- 2 Do not put any objects between the Remote Control and Player while operating the Player.


CAUTION!

- Remove batteries if they are exhausted or if the Remote Control is not being used for a long time.
- Do not use old and new or different types of batteries in combination.
- Batteries contain chemical substances, so they should be disposed properly.

Step 2: Setting up the TV

IMPORTANT!

Make sure you have completed all the necessary connections.

- 1 Press **POWER**  on the RCU to turn Ariva on.
- 2 Turn on the TV and set it to the correct video source. You should see the Ariva background screen.
→ The TV Remote Control may have a button or switch that chooses different video modes.
- 3 If you are using external equipment, (eg. audio system or receiver), turn it on and select the appropriate input source for the Ariva player output. Refer to the equipment owner's manual for detail.

Selecting the TV system that corresponds to your TV

This Player is compatible with NTSC, PAL and HDMI.

- 1 Press **SETUP**.
- 2 Press **▶** to select Video tab
- 3 Press **▲▼** to highlight TV System, then press **▶**.
- 4 Press **▲▼** to highlight one of the available options.
- 5 Select a setting and press **OK**.

Getting Started

Step 3: Setting language preference

The language options are different depending on your country or region. It may not correspond to the illustrations shown on the user manual.

Setting the OSD language

- 1 Press **SETUP**.
- 2 Press **▶** to select System tab.
- 3 Press **▲ ▼** to highlight Menu Language, then press **▶**.
- 4 Press **▲ ▼** to select a language and press **OK**.

IMPORTANT!

– If the inhibit icon (⊘) appears on the TV screen when a button is pressed, it means the function is not available on the current multimedia content or at the current time.

Upscaling

Supported Upscaling on Standard Definition content:

- 1 720p HDTV Progressive Scan - 24/25/30Hz, 720 Lines per Frame, 1280x720 Pixel
- 2 1080i HDTV Interlaced - 50/60Hz, 520+520 Lines per Frame, 1920x1080 Pixel
- 3 1080p HDTV Progressive Scan - 24Hz, 1080 Lines per Frame, 1920x1080 Pixel

Playable Content**File Systems**

FAT16, FAT32, NTFS, EXT3

Video containers

- MPEG1/2 PS (MPG)
- MPEG2 Transport Stream (TS, M2TS)
- VOB (ISO with DVD-Video to)
- AVI
- WMV
- Matroska (MKV)
- AVC HD
- MOV (H.264)
- FLV - Flash Video
- RMVB, RM - RealVideo

Video codecs:

- XVID SD/HD (except 3 warp-point GMC)
- MPEG-1
- MPEG-2
 - MP@HL
 - MPEG-4.2

ASP@L5, 720p, 1 warp-point GMC

- WMV9
 - MP@HL
- H.264
 - BP@L3
 - MP@L4.0
 - HP@L4.0
 - HP@L4.1
 - partly HP@L5.1 (except high bitrates and 16 and more reference frames)
- VC-1
 - MP@HL
 - AP@L3
- MJPEG
- RealVideo 8/9/10, up to 720@30P

Audio containers:

- M4A
- MPEG audio (MP1, MP2, MP3, MPA)
- WAV
- WMA
- FLAC
- OGG
- and others

Audio codecs:

- Dolby Digital
- DTS
- WMA, WMA Pro
- MP1, MP2, MP3
- LPCM
- FLAC
- Vorbis
- and others

Photo formats :

JPEG, BMP, PNG, GIF, HD JPEG, partly TIFF

Subtitle formats :

SRT (SubRip), SMI (Sami), SUB (MicroDVD), SSA (SubStationAlpha), IDX

Copy protected contents are not playable.

Major functions

Basic playback controls

All operations described are based on Remote Control use.

Use ◀▶▲▼ and **OK** button to navigate in the menu.

Pausing playback

- 1 During playback, press **PAUSE** to pause playback and display a still picture.
→ Sound will be muted.
- 2 To resume normal playback, press **PLAY**.

Selecting file

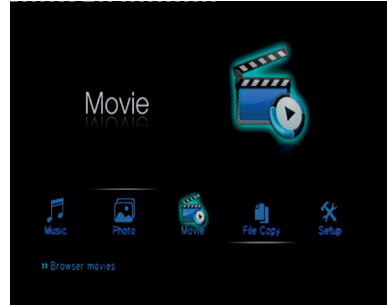
Press **PREV** / **NEXT** to go to the previous or next file

Stopping playback

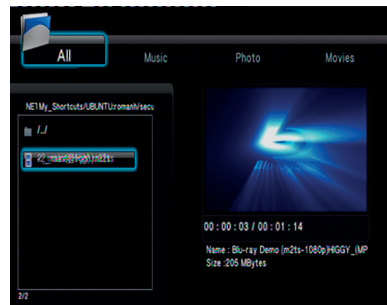
Press **STOP** ■

Operations for video playback

General Operation



- 1 Use ▲▼ to navigate within the menu and select the device you want to access, then press **OK**.
→ A file menu that contains all supported files will be displayed on the TV screen.
→ The memory reading time may exceed 30 seconds due to the complexity of the directory/file configuration.
- 2 Press ▲▼ to select the folder and press **OK** to open the folder.
- 3 Press ▲▼ to select a movie file.



- 4 Press **OK** to confirm.

Repeat play mode

The repeat play options vary depending on the media type.

- 1 While playing, press **REPEAT** continuously to choose a repeat options.
- 2 To cancel repeat playback, press **STOP** ■.

Zooming In

This function allows you to enlarge the picture on the TV screen and to pan through the enlarged picture

- 1 During playback, press **ZOOM** repeatedly to display the picture with different scales.
 - Use ◀▶▲▼ keys to pan through the enlarged picture.
 - Playback will continue.
- 2 Press **ZOOM** repeatedly to return to the original size.

Slow Motion

- 1 Press **SLOW** during playback to select the required speed: 3/4, 1/2, 1/4, 1/8 or 1/16.
 - Sound will be muted.
- 2 To return to normal speed, press **PLAY**.

Forward/Reverse Searching

- 1 Press ◀◀▶▶ during playback to select the required speed: 1.5X, 2X, 4X, 8X, 16X, 32X (backward or forward)
 - Sound will be muted (DVD/VCD/XviD) or intermittent (audio files/CD).
- 2 To return to normal speed, press **PLAY**.

Resuming playback from the last stopped point

Resume playback of the last movies is possible, even if player was in standby.

- Load movie file.
 - 'Resume Playback?' appears during playback. Select Confirm or Cancel
- During the message appears on the TV screen, select Cancel to start playback from the beginning.

Playback info

OSD menu shows playback information (for example, file name, current playback progress, audio and video codecs).

- During playback, press **INFO**
 - A list of available information appears on the TV screen.
- Press **INFO** again
 - A list of available information appears on the TV screen.

Major functions

Changing the Audio Language

- Press **AUDIO** repeatedly to select different audio language or audio tracks.

Subtitles

Subtitles adjustment during movie playback:



- Use ▲▼ keys to change subtitle position.
- Use ◀▶ keys to adjust subtitle font size.
- Display subtitle menu by pressing **SUB-T** button during playback.
- ① Use ▲▼◀▶ keys to change subtitle file. "Subtitle" menu item.
- ② Use ▲▼◀▶ keys to change time shift. "Time Sync" menu item.
- ③ Use ▲▼◀▶ keys to change font color. "Color" menu item.

Press **SUB-T** button again to close subtitle menu.

Helpful Hints:

– Subtitle files with the following filename extensions (.srt, .smi, .sub, .ssa, .idx) are supported. Embedded subtitles in MKV files are supported.

Playing pictures or audio files

Ariva player is able to access and view the data in the supported USB device.

General Operation

- ① Use ▲▼ to navigate within the menu and select the device you want to access, then press **OK**.
→ A file menu that contains all supported files will be displayed on the TV screen.
→ The memory reading time may exceed 30 seconds due to the complexity of the directory/file configuration.
- ② Press ▲▼ to select the folder and press **OK** to open the folder.
- ③ Press ▲▼ to select a track/picture.
- ④ Press **OK** to confirm.

Playback selection

During playback ,you can;

- Press **PREV/NEXT** to select the previous/ next track/file in the current folder.
- Press **PIAY/PAUSE** repeatedly to pause/ resume playback.

Zoom picture

- During picture viewing, press **ZOOM** repeatedly to display the picture with different scales.
- Use ▲▼◀▶ to view the zoomed picture

Rotating Pictures

- During playback, press ◀▶ to rotate the picture on the TV screen.
 - ◀: flip the picture anti-clockwise by 90°
 - ▶: flip the picture clockwise by 90°

Helpful Hints:

- It may not be possible to play certain picture files disc due to the configuration and used specific algorithm (especially in TIFF files)

Playing music files and JPEG picture simultaneously

- ① Load a disc that contains music and picture.
 - Load a disc that contains music and picture.
- ② Select an music track.
- ③ During music playback, select a picture from the TV screen and press **OK**.
 - The picture files will be played back one after another until end of the folder.
- ④ To quit simultaneous playback, press **STOP**.

Helpful Hint:

- Some files on Kodak or JPEG disc may be distorted during playback due to the configuration and characteristics of the disc.
- During simultaneous playback, fast forward / reverse or slow forward is not available.

File copy

Ariva player is able to copy and move files among supported devices.

General Operation

- ① Select "File Copy" menu item
- ② Use ▲▼ to navigate within the menu and select source and destination device, then press **OK**.
 - A file menu that contains all supported files will be displayed on the TV screen.
 - The memory reading time may exceed 30 seconds due to the complexity of the directory/file configuration.
- ③ Press ▲▼ to select the source and destination folder and press **OK** to open the folder.
- ④ Press ▲▼ and **SELECT** button to select a file.
- ⑤ Press ▶ to choose destination folder.
- ⑥ Press ▶ to open operation menu.
- ⑦ Use ▲▼ to choose Copy or Move operation
- ⑧ Press **OK** to confirm.

Helpful Hint:

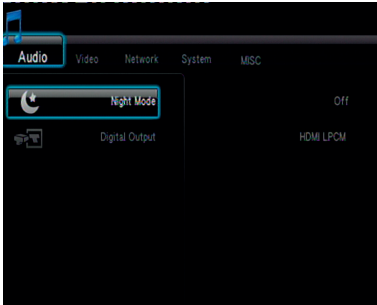
- Recording on connected DVD drive is not available

Setup Menu Options

This Player setup is carried out via the TV, enabling you to customise the Ariva player to suit your particular requirement.

Audio setup menu

- 1 Press **SETUP** button.
- 2 Press ◀▶ to select Audio tab.



Digital Audio Setup

- 1 In Audio setup tab, use ▲▼ keys to highlight “Digital Output”, then press **OK**.
- 2 Use ▲▼ keys to select a setting and press **OK** to confirm.

Helpful Hint:

- If “Digital Output” is set to one of “LPCM” modes, then Ariva player will transcode supported audio tracks.
- If “Digital Output” is set to one of “RAW” modes, then Ariva player will pass untouched audio bitstream to external device.

Video setup menu

- 1 Press **SETUP** button.
- 2 Press ◀▶ to select Video tab.

TV System

This menu contains the options for selecting the colour system (PAL or NTSC) and HDMI resolution that matches the connected TV.

- 1 In Video tab, press ▲▼ to highlight “TV system”, then press **OK**.
- 2 Press ▲▼ to select a setting:
 - 480p**: Progressive output in 480 lines for NTSC TV.
 - 576p**: Progressive output in 576 lines for PAL TV.
 - 720p**: Progressive output 720 lines.
 - 1080i**: Interlaced output 1080 lines.
 - 1080p**: Progressive output 1080 lines.
 - HDMI Auto**: Output automatically based on your display’s supported resolution.
- 3 Press **OK** to confirm.

Helpful Hint:

- If not display appears on the TV screen due to unsupported resolution, use TV-SYS button on RCU or reconnect any available interlace video output to your display and re-adjust the resolution settings to 576p.
- Select HDMI AUTO to automatically display the best resolutions settings.
- 60Hz may not be supported by european TVs. It is value specific to TVs for USA market.

Aspect ratio

The picture shape can be adjusted to fit your TV.

① In Video tab, press ▲▼ to highlight "Aspect ratio", then press **OK**.

② Press ▲▼ to select a setting:

Panscan 4:3 : Select this for a full-height picture with the sides trimmed. Set it for legacy SD TV.

Letterbox 4:3 : Select this for a 'wide-screen' display with black bars on the top and bottom. Set it for legacy SD TV.

16:9 : Select this for wide-screen TV (frame ratio 16:9). Set it for HD ready or FullHD TV.

③ Press **OK** to confirm.

Network setup menu

① Press **SETUP** button.

② Press ◀▶ to select Network tab.



Wired LAN setup

This menu display current Ethernet network status and IP address. You can also configure manually static IP address.

Helpful Hint:

- Default configuration (DHCP) should work in most networks.

Wireless setup

This menu display current WiFi network status and IP address. You can configure manually your connection here

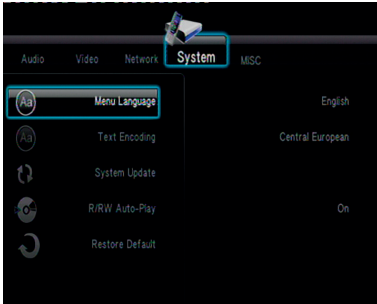
Helpful Hint:

- Wireless network support require supported WiFi dongle in order to work correctly

Setup Menu Options

System setup menu

- 1 Press **SETUP** button.
- 2 Press ◀▶ to select System tab.



Menu Language

This menu contains various language options for display language on the screen.

Text encoding

You can set the font type that supports the filenames and subtitle encoding.

Central European (CP1250): Albanian, Croat, Czech, Dutch, English, German, Hungarian, Irish, Polish, Romanian, Slovak, Slovene and Sorbian.

Western (CP1252): Albanian, Danish, Dutch, English, Finnish, French, Gaelic, German, Italian, Kurdish (Latin), Norwegian, Portuguese, Spanish, Swedish and Turkish.

Cyrillic (CP1251) : Bulgarian, Belorussian, English, Macedonian, Moldavian, Russian, Serbian and Ukrainian.

Unicode (UTF-8) and others: select proper option if you have subtitles in this code page format

Restoring to original settings

Setting the “Restore Default” function will reset all options and your personal settings to the factory defaults.

Misc setup menu

- 1 Press **SETUP** button.
- 2 Press ◀▶ to select Misc tab.

Resume play

Ariva player by default saves last position in played movies, so when you return to watching movie you can start from this position.

Helpful Hint:

Resume playback of the last movies is possible, even if player was in standby.

Slide show timing

Use this menu to set the time interval between pictures in the slide show.

transition effect

Use this menu to set the favorite transition effect between pictures in the slide show.

WARNING

Under no circumstances should you try to repair the system yourself, as this will invalidate the warranty. Do not open the system as there is a risk of electric shock.

If a fault occurs, first check the points listed below before taking the system for repair. If you are unable to remedy a problem by following these hints, consult your dealer for help.

| Problem | Solution |
|---|---|
| No power | <ul style="list-style-type: none"> – Check if the AC power cord is properly connected. – Press the POWER on the RCU to turn on the power. |
| No picture | <ul style="list-style-type: none"> – Refer to your TV's manual for correct Video In channel selection. – Check if the TV is switched on. |
| No sound or distorted sound | <ul style="list-style-type: none"> – Adjust the volume. – Check that the speakers are connected correctly. |
| No audio at digital output | <ul style="list-style-type: none"> – Check the digital connections. – Check if your receiver can decode Dolby Digital, DTS and if not, please make sure the digital output is set to LPCM. – Check if the audio format of the selected audio language matches your receiver capabilities. |
| The player does not respond to the Remote Control | <ul style="list-style-type: none"> – Aim the Remote Control directly at the sensor on the front of the player. – Reduce the distance to the player. – Replace the batteries in the Remote Control. – Re-insert the batteries with their polarities (+/- signs) as indicated. |
| Player does not respond to some operating commands during playback. | <ul style="list-style-type: none"> – Operations may not be permitted. Refer to the user manual |
| No sound during movies playback | <ul style="list-style-type: none"> – The audio codec may not be supported by the player. |
| The contents of the USB flash drive cannot be read | <ul style="list-style-type: none"> – The USB flash drive format is not compatible with the player. – Drive is formatted with a different file system. |
| Slow operations of the USB flash drive | <ul style="list-style-type: none"> – Big file size or high resolution USB flash drive takes longer time to read and display on the TV screen. |
| No sound is output from the HDMI out | <ul style="list-style-type: none"> – Check the connection between the TV and the HDMI jack of player. – Check your TV system setup correctly. |
| The TV screen is blank and the Ariva player power LED is blinking. | <ul style="list-style-type: none"> – A system diagnostic failure occurred. Turn off your Ariva player, wait 10 minutes, turn it on again. If the something contact the Technical Support for assistance. |
| WiFi network (Infrastructure AP mode) does not appear in the list | <ul style="list-style-type: none"> – Dedicated WiFi dongle is not plugged in USB port. – Router is not powered. – Is the WiFi enabled? See the configuration page of your router. – Is your router on the network name is set to: broadcast (not hidden). – Is this other device (for example PC) detects your WiFi access? – Is your Ariva close enough to your router? WiFi signal loses intensity with distance and if it encounters obstacles such as walls. – Is there a close Ariva device emitting waves may parasitize Ariva's WiFi dongle? (mobile phone, wireless headphones, listen baby, speaker, HiFi) – Does MAC filtering is enabled on your router? |

Specifications

ENGLISH

Operating System

Linux

Processor

Realtek RTD1073DD

Flash

256 MiB (2 Gbit) NAND

RAM

128 MiB DDR2 SDRAM

Optional USB equipment (not included)

WiFi dongle

DVD drive

Network

Wired 100Mbps Ethernet

Wireless optional WiFi dongle
802.11n--Realtek RTL8191SU

Connections

| | |
|--------------------|------------------------|
| CVBS Output | Cinch (yellow) |
| HDMI Output | HDMI 1.3 |
| Audio Output (L+R) | 2x Cinch (white/red) |
| Digital Output | 1 coaxial 1 optical |
| Port USB | 2x USB 2.0 type A |
| Port Ethernet | 1x RJ-45 |
| Card reader | 1x SD/MMC/MS |

Cabinet

| | |
|------------------------|---------------------|
| Dimensions (w x h x d) | 175 x 125 x 43 mm |
| Weight | Approximately 1,2kg |

Power consumption

| | |
|-------------------|----------|
| AC/DCAdapter | DC 5V/3A |
| Power consumption | <15W |

Specifications subject to change without prior notice

Analog: Sound that has not been turned into numbers. Analog sound varies, while digital sound has specific numerical values. These jacks send audio through two channels, the left and right.

Aspect ratio: The ratio of vertical and horizontal sizes of a displayed image. The horizontal vs. vertical ratio of conventional TVs. is 4:3, and that of widescreens is 16:9.

AUDIO OUT Jacks: Jacks on the back of the DVD System that send audio to another system (TV, Stereo, etc.).

Bit Rate: The amount of data used to hold a given length of music; measured in kilobits per seconds, or kbps. Or, the speed at which you record. Generally, the higher the bit rate, or the higher the recording speed, the better the sound quality. However, higher bit rates use more space on a Disc.

Disc menu: A screen display prepared for allowing selection of images, sounds, subtitles, multi-angles, etc recorded on a DVD.

Digital: Sound that has been converted into numerical values. Digital sound is available when you use the DIGITAL AUDIO OUT COAXIAL or OPTICAL jacks. These jacks send audio through multiple channels, instead of just two channels as analog does.

XviD: MPEG-4 based video compression technology, that can shrink digital video to sizes small enough to be transported over the internet, while maintaining high visual quality.

Dolby Digital: A surround sound system developed by Dolby Laboratories containing up to six channels of digital audio (front left and right, surround left and right, center and subwoofer).

JPEG: A very common digital still picture format. A still-picture data compression system proposed by the Joint Photographic Expert Group, which features small decrease in image quality in spite of its high compression ratio.

PCM (Pulse Code Modulation): A system for converting analog sound signal to digital signal for later processing, with no data compression used in conversion.

Surround: A system for creating realistic three-dimensional sound fields full of realism by arranging multiple speakers around the listener.

VIDEO OUT jack: Jack on the back of the DVD System that sends video to a TV.

HDMI: High Definition Multimedia Interface. A specification developed by the HDMI Working Group that combines multi-channel audio and high definition video and that controls signals into a single digital interface for use with DVD players, digital television, and other audiovisual devices.

H.264: s a next-generation video compression format. H.264 is also known as MPEG-4 AVC. Developed for use in high definition systems such as HDTV, Blu-ray as well as low resolution portable devices, H.264 offers better quality at lower file sizes than both MPEG-2 and MPEG-4 ASP (DivX or XviD). H.264 is sometimes referred (erroneously) as x264 – x264 is the name of a popular freeware encoder for the H.264 format. H.264 is also sometimes referred to as MP4, again this is technically incorrect. MP4 is a container format much like AVI or MKV and it can be used to “house” many different types of compression codecs, not just H.264.

www.ferguson-digital.eu