

1. What's in the box?



Ariva HDplayer 210



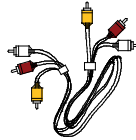
User manual



Remote Control
Unit



2x AAA batteries



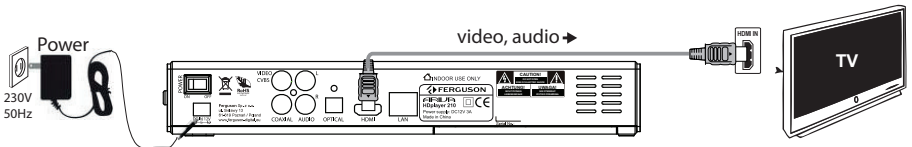
HDMI and A/V
cable



AC power
adaptor

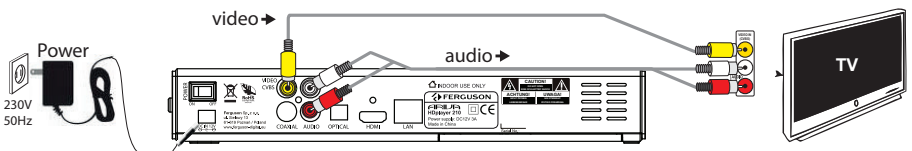
2. Connect - basic audio/video connections

HDMI (Best quality)



or

CVBS / Composite (Normal quality) and stereo audio



Quick Start Guide

3. Setup

- 1 Press **⏻** to turn on.
- 2 Press **SETUP** to enter Setup menu.
- 3 Select **🇬🇧** System tab then "Menu Language" option and press **OK**.
- 4 Use **▲▼** keys to select a language option in the menu and press **OK** to confirm.
- 5 Adjust other settings if needed
- 6 Press **SETUP** to exit.

4. Use

- 1 Copy multimedia files to USB memory



- 2 Connect USB memory to USB port in Ariva player
- 3 Use **◀▶▲▼** keys to navigate in the menu. Choose category Music, Photo or Movie then select USB from the devices list and select file that you want to play
- 4 Press **OK** to start playback.
- 5 To stop playback, press **STOP**.

CAUTION!

Refer to the user manual for more information.

Introduction

- 1 Product Overview
- 1 Supplied accessories
- 1 Safety Information
- 2 User manual
- 2 Software upgrade
- 3 Symbols used on the device
- 3 Setup

Connections

- 4 Connecting to a TV
- 5 Connecting the power cord
- 6 Optional: Connecting to an Stereo System
- 6 Optional: Connecting Digital AV Receiver
- 7 Optional: Connecting a supported USB devices
- 8 Optional: Connecting Ethernet network
- 8 Optional: Connecting WiFi network

Functional Overview

- 9 Front, Side and Rear panels
- 10 Remote Control Unit (RCU150)

Getting Started

- 11 Step 1: Inserting batteries into the Remote Control
- 11 Step 2: Setting up the TV
- 12 Step 3: Setting language preference

Major functions

- 13 Upscaling
- 13 Playable Content
- 15 Basic playback controls
- 16 Operations for video playback
- 18 Playing pictures or audio files
- 19 File copy
- 19 IMS
- 20 SATA bay
- 20 NAS function (Samba server)
- 21 BitTorrent client

Setup Menu Options

- 22 Audio setup menu
- 22 Video setup menu
- 23 Network setup menu
- 24 System setup menu
- 25 Misc setup menu

Troubleshooting

Specification

Glossary

Product Overview

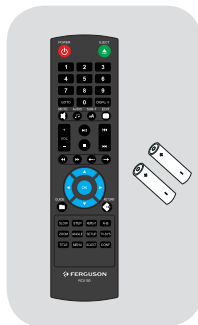
Thank you for purchasing the Ariva HDplayer 210. This user manual provides step-by-step instructions for installing and using your new HD media player. Ariva HDplayer 210 is a compact, high-definition (HD) (Wi-Fi Net supporting) USB 2.0 media player that attaches to an entertainment unit through a variety of audio/video interfaces and supports playback of major audio, video, and image file formats. Player supports high-definition video playback of up to 1080p through an HDMI connection or standard definition for TVs with lower capabilities. High-fidelity digital audio is supported from an optical interface (Toslink). Two USB ports are available to connect USB storage devices. The included remote control lets you quickly browse through your media library and configure settings.

Supplied accessories

Remote Control

two AAA batteries

HDMI cable



Safety Information

- Please observe all warnings and instructions on the equipment and contained in these operating instructions.
- Please carefully read this user's manual before using the device.
- To avoid electric-shock hazards, do not open the cabinet, refer servicing to qualified personnel only. If cabinet is opened warranty will be invalid.
- Please switch off completely the device during thunder, during abnormal phenomenon, before cleaning it and in case it remains out of service for a long period.
- Do not expose the device under the sunlight. And keep it away from the heat source or humid environments. Do not block ventilation holes of the device so that air can circulate freely.
- Please place the device in horizontal and stable conditions, keeping it away from vibrating.
- If device is moved from warmer place to a colder one some problem might occur. Please switch off the device and turn it on after 1 or 2 hours.
- Keep the device away from flower vases, tubs, sinks, etc., in order to avoid damaging the equipment. Do not touch power supply with wet hands.
- Don't put any objects on the device.
- Be sure to turn the device off and disconnect the AC power cord before cleaning the receiver surface. If the surface is dirty, wipe clean with a cloth which has been dipped in a weak soap/and/water solution and wrung out thoroughly, and then wipe again with a dry cloth.
- Do not connect cables while power is plugged.

- Do not use damaged cables for connections: you could cause fires.
- Please switch off completely the device while making all connections.
- The product purchased is a sophisticated electronic device which is not suitable for children under 18 years.
- We do not assume responsibility for damages caused to people or object, deriving from use of the device made by people under 18 years.

User manual

Ferguson has used all the available means to ensure the latest information regarding its products. Ferguson does not give a warranty regarding the contents of this User Manual and waives any implied warranties regarding market value or fitness for specific purposes. The information contained herein provide guidelines allowing the operation and maintenance of the receiver.

Ferguson reserves the right to make changes, corrections or to translate the User Manual without giving prior notice of such changes. Therefore, it is recommended that users visit our website regularly to receive the latest information.

- **To obtain the most current user manual**

Visit the Ferguson website www.ferguson-digital.eu to check the availability of the latest version of user manual. Please visit the FAQ section too.

Software upgrade

Periodically Ferguson will issue software upgrade to enhance your user experience.

- **To download and install the latest software to the player**

Visit the Ferguson website www.ferguson-digital.eu to check the availability of the latest software upgrade.

Symbols used on the device



The caution risk of electrical shock - do not open symbol

This symbol tells you that you are not allowed to open the device. Only authorized (service) technicians are allowed to open the box.



The CE mark

This mark tells you that the device is following the provisions of Council Directive 2004/108/EC on the approximation of the laws of the Member States relating to the electromagnetic compatibility and the provisions of Council Directive 2006/95/EC and 93/68/EEC on the approximation of the laws of the Member States relating to low voltage and electrical safety.



The double insulation symbol

This symbol tells you that the device is electrically safe within the normal use of the device as stated in the safety chapter.



RoHS
compliant
2002/95/EC

The RoHS mark

This mark tells you that the device is following The Directive on the Restriction of the Use of Certain Hazardous Substances in Electrical and Electronic Equipment 2002/95/EC (commonly referred to as the Restriction of Hazardous Substances Directive or RoHS)

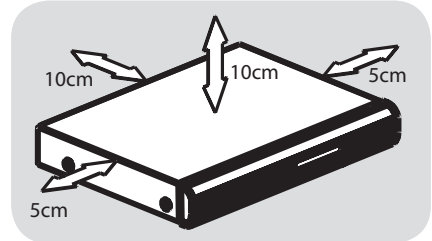
Setup

Finding a suitable location

- Place the set on a flat, hard and stable surface. Do not place the set on a carpet.
- Do not position the set on top of other equipment that might heat it up (e.g. receiver or amplifier).
- Do not put anything under the set (e.g. CDs, magazines).
- Install this system near the AC outlet and where the AC power plug can be reached easily.

Space for ventilation

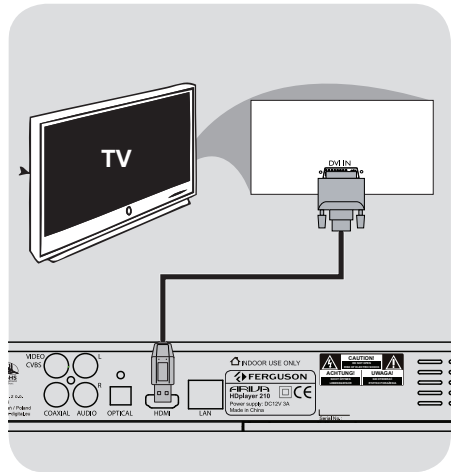
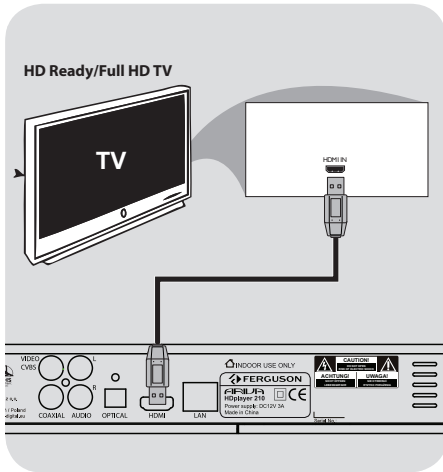
- Place the apparatus in a location with adequate ventilation to prevent internal heat build up. Allow at least 10 cm clearance from the rear and the top of the set and 5 cm from the left and right to prevent overheating.



Avoid high temperatures, moisture, water and dust

- Apparatus shall not be exposed to dripping or splashing.
- Do not place any sources of danger on the apparatus (e.g., liquid filled objects, lighted candles).

Connecting TV



IMPORTANT!

- You only need to make one video connection from the following options, depending on the capabilities of your TV system.
- Connect the player directly to the TV.
- When there is no picture on screen press repeatedly TV-SYS key.

Using HDMI (High Definition Multimedia Interface) sockets

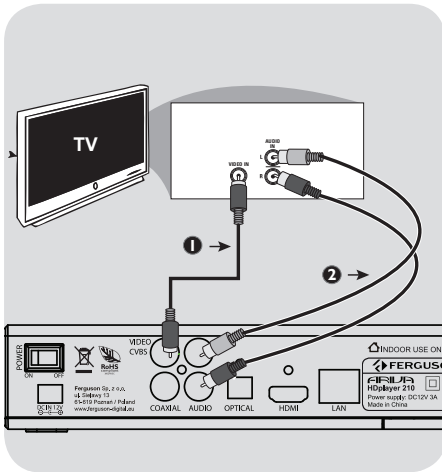
- HDMI transfers an uncompressed digital signal for the clearest sound/image quality.
- It has plug and play capability using only one cable for both audio/video output.
- ① Use a HDMI cable to connect the player's HDMI to HDMI IN on the HDMI TV.
 - It may take a while for the Ariva player and input device to communicate and initialise.

Using DVI (Digital Visual Interface) sockets

- If your TV has a DVI IN socket, you need a HDMI-DVI adapter cable to connect the HDMI socket on the Ariva player.
- This HDMI-DVI cable has only video output capability.
- ① Use a HDMI-DVI cable (not supplied) to connect the Ariva player's HDMI to DVI IN on the DVI TV.

Helpful hint:

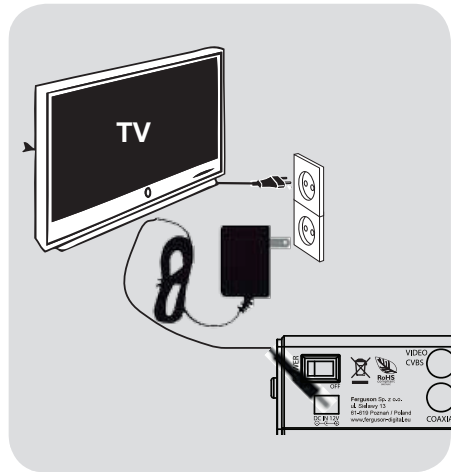
- ➔ To hear sound from the Ariva player, use one of the audio connections.



Using Composite Video Jacks (CVBS)



- 1 Use the composite video cable (yellow) to connect the Ariva player's CVBS(VIDEO) jack to the video input jack (or the labeled as A/V in , Video In, Composite or Baseband) on the TV.
- 2 To hear the sound of this Ariva Player through your TV, use the audio cables (white/red) to connect AUDIO OUT (L/R) jacks of the Ariva player to the corresponding AUDIO IN jacks on the TV.

Connecting the power cord



After everything is connected properly, connect the power cable to the media player's DC connector, and then plug the opposite end into an AC power outlet. The media player powers up automatically.

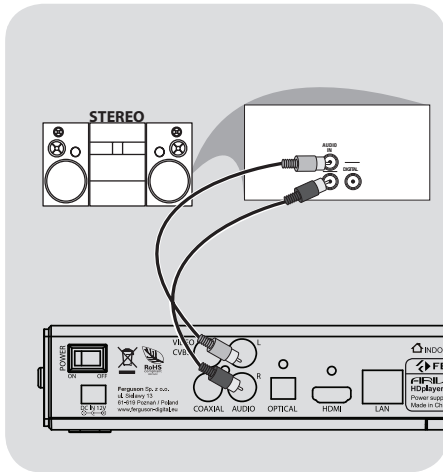
Never make or change any connections with the power switched on.

Press **POWER**  on the RCU. Standby-On diode  will change color on the front panel.

Connections

ENGLISH

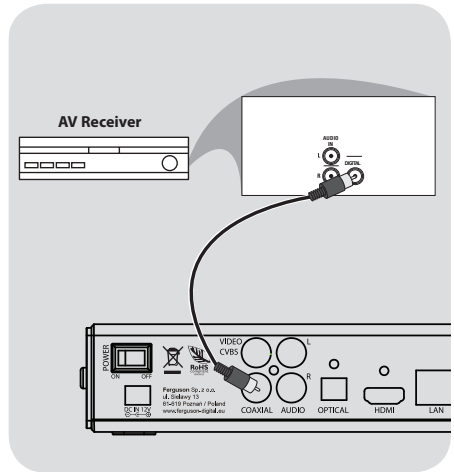
Optional: Connecting to an Stereo System



Stereo system has Right/Left Audio In Jack

- 1 Select one of the video connections (CVBS VIDEO or HDMI) depending on the options available on your TV.
- 2 Use the audio cables (white/red) to connect **AUDIO OUT (L/R)** jacks of the Ariva Player to the corresponding AUDIO IN jacks on the stereo system.

Optional: Connecting Digital AV Receiver



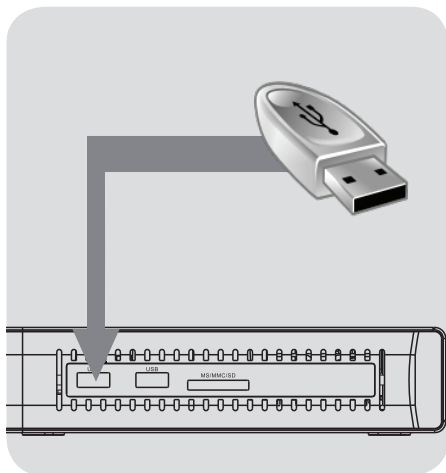
Receiver has a PCM, Dolby Digital, or DTS decoder

- 1 Select one of the video connections (CVBS VIDEO or HDMI) depending on the options available on your TV.
- 2 Connect the COAXIAL or OPTICAL jack of the Ariva player to the corresponding Digital Audio In jack on your Receiver (*cable not supplied*).
- 3 Set the Ariva Player's Digital Output to SPDIF LPCM or SPDIF RAW depending on the capabilities of your Receiver.

Helpful hint:

- If the audio format of the Digital Output does not match the capabilities of your receiver, the receiver will produce a strong, distorted sound or no sound at all.

Optional: Connecting a supported USB devices



Using USB port for playback

- ➊ Connect the supported USB device directly to the USB port on the side panel (as shown on the above illustration).
- ➋ Navigate through menu in order to view the files stored in the supported USB device.
- ➌ You have to stop playback before removing the supported USB device from the USB port.

Helpful hints:

- ➔ The USB port supports playback of all supported multimedia files.
- ➔ Not all portable audio/video players and digital cameras are supported.
- ➔ External hard disk drives without separate power supply are not supported and may not work.
- ➔ If the USB device does not fit into the USB port, a USB extension cable is required.

Connecting DVD drive

- ➊ Connect the supported USB BD/DVD drive directly to the USB port on the side panel (as shown on the above illustration).
- ➋ Navigate through menu in order to view the files stored on the BD/DVD disc.
- ➌ You have to stop playback before removing the USB BD/DVD drive from the USB port.

Helpful hints:

- ➔ The USB port supports playback of all supported multimedia files.
- ➔ Not all USB BD/DVD drives are supported.
- ➔ Only format ISO9660 disc are supported
- ➔ Drives without separate power supply are not supported and may not work.

Connecting WiFi dongle

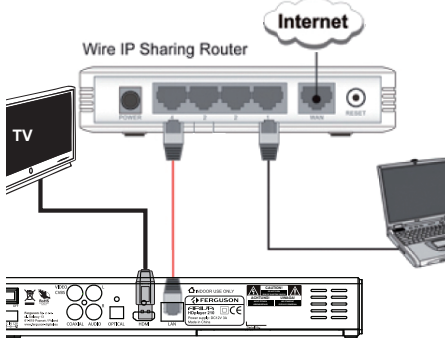
You can only connect dedicated dongle with Realtek chip.

- ➊ Connect the supported WiFi dongle to the USB port on the side panel (as shown on the above illustration).
- ➋ Configure in menu WiFi connection.
- ➌ You have to disconnect WiFi network before removing the WiFi dongle from the USB port.

Helpful hints:

- ➔ WiFi networks are usually slower than cable (Ethernet) networks. It may affect playback performance.

Optional: Connecting Ethernet network



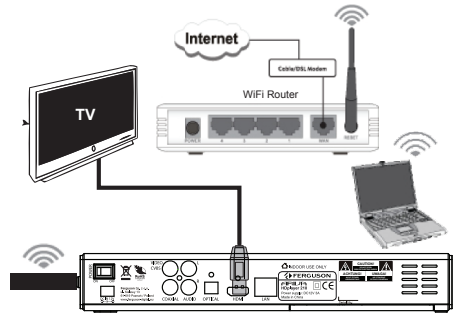
Ethernet 100Mb network

- 1 Connect the Ethernet RJ-45 cable to LAN port as shown on the above illustration.
- 2 Wait a moment until DHCP will configure network connection.

Helpful hints:

→ If there is no DHCP server in your network you can manually configure Ariva IP address - "Fix IP (manual)" menu item.

Optional: Connecting WiFi network



WiFi 802.11g/n network

IMPORTANT!

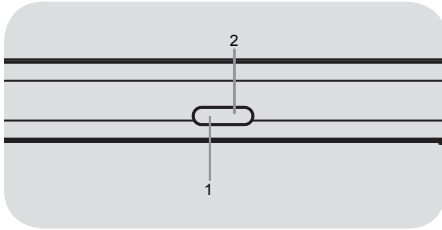
→ You need dedicated WiFi USB dongle for wireless connection. This dongle is optional accessory and may be sold separately.

- 1 Connect dedicated WiFi USB dongle to USB port as shown on the above illustration.
- 2 Enter "Setup" > "Network" > "Wireless Setup" > "Infrastructure (AP)" menu
- 3 Select one of detected networks and enter valid key.

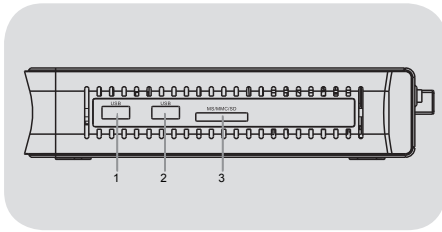
Helpful hints:

- If you don't have WiFi router select "Peer to Peer (Ad-Hoc)" instead of "Infrastructure (AP)"; then configure settings (SSID, WEP key, Ariva IP address)
- WiFi networks are usually slower than cable (Ethernet) networks. It may affect playback performance.

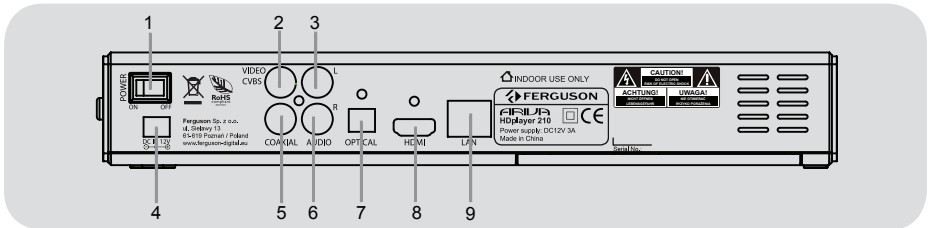
Front, Side and Rear panels



- ① **IR Sensor** - Point the remote control towards this sensor
- ② **POWER Display** - Shows information about the current status of the Player



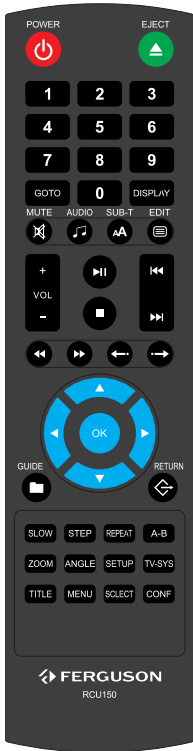
- ①② **USB port** - Input the supported USB device
- ③ **Card reader** - Input the supported flash card. SD, MMC or MS



- ① **Power** - power switch
- ② **CVBS (Composite Video Out)** - connect to CVBS video input of a TV
- ③ **L Stereo Audio Out** - connect to audio left input of a stereo system
- ④ **DC Power Supply Input** - connect AC power adaptor (use only supplied adaptor)
- ⑤ **COAXIAL (Digital Audio Out)**- connect to coaxial audio input of an amplifier
- ⑥ **R Stereo Audio Out** - connect to audio right input of a stereo system
- ⑦ **OPTICAL (Digital Audio Out)** - connect to coaxial audio input of an amplifier
- ⑧ **HDMI** - Audio and video output socket for the high definition television set
- ⑨ **Ethernet**- Network Interface (LAN)

Functional Overview

Remote Control Unit (RCU150)



- POWER** - Turns the player on or switches it to standby mode
- EJECT** - Eject disc (you need external BD/DVD drive connected to USB port or internal drive)
- Alphanumeric keypad 0-9** - Selects numbered items in a menu
- GOTO** - Start playback from a designated point
- DISPLAY** - Display information on the screen during playback
- MUTE** - Turn on/off sound
- AUDIO** - Selects an audio track or language (DVD/avi/mkv)
- SUB-T** - Selects a subtitle file / subtitle moving / font change /time adjustment
- EDIT** - Rename or delete file in file browser
- VOL + -** - Increase / decrease the volume
- II** - Starts playback / Pauses playback
- - Stops playback
- ⏮** - Skips to previous file
- ⏭** - Skips to the next file
- ⏪** - Reverse search
- ⏩** - Fast forward
- ⏮ / ⏩** - Jump back or forward during playback
- GUIDE** - Enter or exits the main menu
- ◀ ▶ ▲ ▼** - Cursor buttons for moving left, right, up, down.
- OK** - Confirms an entry or selection
- RETURN** - Return to playback / folder up in file browser
- SLOW** - Slow the normal play motion
- STEP** - Step play
- REPEAT** - Selects various repeat modes
- A-B** - Selects fragment for repeat mode
- ZOOM** - Enlarge a picture on the TV screen
- ANGLE** - Switch the camera angle during DVD-Video playback
- SETUP** - Enters or exits system setup menu
- TV-SYS** - Toggle Video Output Modes and resolution (HDMI, CVBS)
- TITLE** - To go back to show title menu (DVD-Video)
- MENU** - Enter or exits the disc menu (DVD-Video)
- SELECT** - Select files/folders to copy/move in File Copy mode
- Select files to add to Playlist
- CONF** - Confirm operations on playlist

Step 1: Inserting batteries into the Remote Control

- 1 Open the battery compartment.
- 2 Insert two batteries type R03 or AAA, following the indications(+ -) inside the compartment.
- 3 Close the cover.

Using the Remote Control to operate the Player

- 1 Aim the Remote Control directly at the remote sensor (IR) on the front panel.
- 2 Do not put any objects between the Remote Control and Player while operating the Player.


CAUTION!

- Remove batteries if they are exhausted or if the Remote Control is not being used for a long time.
- Do not use old and new or different types of batteries in combination.
- Batteries contain chemical substances, so they should be disposed properly.

Step 2: Setting up the TV

IMPORTANT!

Make sure you have completed all the necessary connections.

- 1 Press **POWER**  on the RCU to turn it on.
- 2 Turn on the TV and set it to the correct video source. You should see the Ariva background screen.
 - The TV Remote Control may have a button or switch that chooses different video modes.
- 3 If you are using external equipment, (eg. audio system or receiver), turn it on and select the appropriate input source for the Ariva player output. Refer to the equipment owner's manual for detail.

Selecting the TV system that corresponds to your TV

This Player is compatible with NTSC, PAL and HDMI.

- 1 Press **SETUP**.
- 2 Press **▶** to select Video tab
- 3 Press **▲▼** to highlight TV System, then press **▶**.
- 4 Press **▲▼** to highlight one of the available options.
- 5 Select a setting and press **OK**.

Step 3: Setting language preference

The language options are different depending on your country or region. It may not correspond to the illustrations shown on the user manual.

Setting the OSD language

- 1 Press **SETUP**.
- 2 Press **▶** to select System tab.
- 3 Press **▲ ▼** to highlight Menu Language, then press **▶**.
- 4 Press **▲ ▼** to select a language and press **OK**.

IMPORTANT!

→ If the inhibit icon (ø) appears on the TV screen when a button is pressed, it means the function is not available on the current multimedia content or at the current time.

Upscaling

Supported Upscaling on Standard Definition content:

- 1 720p HDTV Progressive Scan - 24/25/30Hz, 720 Lines per Frame, 1280x720 pixel
- 2 1080i HDTV Interlaced - 50/60Hz, 520+520 Lines per Frame, 1920x1080 pixel
- 3 1080p HDTV Progressive Scan - 24/25/30Hz, 1080 Lines per Frame, 1920x1080 pixel

Playable Content

File Systems

- FAT (FAT16 and FAT32)
- NTFS
- EXT2, EXT3
- ISO-9660 and partly UDF on external optical drive (BD or DVD)

Video containers

- MPEG-1/2 Program Stream (MPG, MPEG)
- MPEG-2 Transport Stream (TS, TP, TRP, M2TS)
- MPEG-4 Part 14 (MP4)
- VOB (also ISO images with DVD-Video)
- AVI
- ASF (ASF, WMV)
- Matroska (MKV)
- AVCHD (MTS, M2TS)
- MOV (H.264)
- FLV - Flash Video
- Realmedia (RMVB, RM)
- BD (folder structure or ISO image)

Video codecs:

Most video codecs are supported up to 1080p resolution.

- XviD (except 3 warp-point GMC)
- MPEG-1
- MPEG-2
 - MP@HL
 - MPEG-4.2
 - ASP@L5, 720p, 1 warp-point GMC
- WMV9
 - MP@HL
- H.264 (MPEG-4 AVC)
 - BP@L3
 - MP@L4.0
 - HP@L4.0
 - HP@L4.1

Major functions

partly HP@L5.1 (except high bitrates and 12 and more reference frames)

- VC-1
 - MP@HL
 - AP@L3
- MJPEG
- RealVideo 8/9/10, up to 720@30P

Subtitle formats:

- SRT (SubRip)
- SMI (Sami)
- SUB (MicroDVD, SubViewer2)
- SSA (SubStationAlpha)
- ASS (Advanced Sub Station Alpha)
- PSB (PowerDivx)
- TXT (TMplayer, MPL2, SubRip, Sami, MicroDVD, SubViewer2, SubStationAlpha, Advanced Sub Station Alpha, PowerDivx)
- Timed Text (TTXT, subtitles embeded in .mp4 files)
- IDX
- PGS

Some user-created subtitles may not work properly

Some special characters are not supported

HTML tags are not supported

A movie file and external subtitle file must be located in the same folder.

A movie file name and its subtitle file name must be identical to be displayed.

Photo formats :

- JPEG, HD JPEG (baseline)
- BMP
- PNG (except Interlace)
- GIF
- partly TIFF (uncompressed, LZW, ZIP)

Audio containers:

- M4A
- MPEG audio (MP1, MP2, MP3, MPA)
- WAV
- ASF (ASF, WMA)
- FLAC
- OGG
- Matroska (MKA)
- AIFF
- and others

Audio codecs:

- Dolby Digital (AC3, EAC3)
- DTS, DTS-HD (downmix)
- WMA, WMA Pro
- MP1, MP2, MP3
- LPCM
- FLAC
- Vorbis
- COOK
- LSD (RA-lossless)
- ADPCM
- and others

Playlists:

- M3U

Extensions recognized in Ariva file browser.

List of recognized multimedia file extensions are listed below. Not all files with those extensions are playable - some files may include not supported codecs and/or settings. Files with other extensions Ariva will not play.

acc, aiff, asf, avi, bmp, dat, divx, dng, flac, flv, gif, ifo, iso, jpeg, jpg, m2ts, m3u, m4a, m4v, mka, mkv, mov, mp3, mp4, mpeg, mpg, mts, ogg, png, ra, rm, rmvb, tif, tiff, tp, trp, ts, vob, wav, wma, wmv

CAUTION!

- Playback of some files may fail or be incorrect
- Copy protected content is not playable.
- Playback may suffer temporary interruptions (image freeze, faster/slower playback, etc) when the audio language (audio track) is changed
- A damaged movie file may not be played correctly
- Videos with resolution higher than 1920x1080@25/30P or 1280x720@50/60P may not work properly
- We do not guarantee smooth playback of movies encoded in profiles level 4.1 or higher in H.264
- Movies larger than 30 GiB may not play correctly
- Playing a movie via a USB/SDHC card/network that doesn't support high speed may not work properly.
- Playback of movie files with video bitrate over 30 Mbps may be incorrect

Basic playback controls

All operations described are based on Remote Control use.

Use ◀▶▲▼ and **OK** button to navigate in the menu.

Pausing playback

- ① During playback, press ▶|| to pause playback and display a still picture.
 - Sound will be muted.
- ② To resume normal playback, press ▶||.

Selecting file

Press ◀◀ / ▶▶ to go to the previous or next file

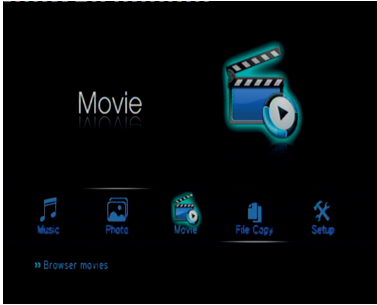
Stopping playback

Press ■

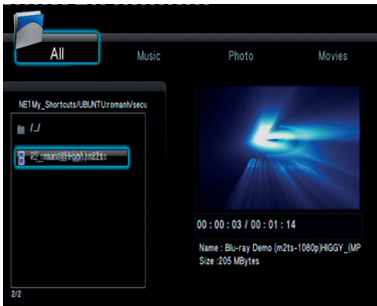
Major functions

Operations for video playback

General Operation



- 1 Use ▲▼ to navigate within the menu and select the device you want to access, then press **OK**.
→ A file menu that contains all supported files will be displayed on the TV screen.
→ The memory reading time may exceed 30 seconds due to the complexity of the directory/file configuration.
- 2 Press ▲▼ to select the folder and press **OK** to open the folder.
- 3 Press ▲▼ to select a movie file.



- 4 Press **OK** to confirm.

Repeat play mode

The repeat play options vary depending on the media type.

- 1 While playing, press **REPEAT** continuously to choose a repeat options.
- 2 To cancel repeat playback, press ■.

Zooming In

This function allows you to enlarge the picture on the TV screen and to pan through the enlarged picture

- 1 During playback, press **ZOOM** repeatedly to display the picture with different scales.
→ Use ◀▶▲▼ keys to pan through the enlarged picture.
→ Playback will continue.
- 2 Press **ZOOM** repeatedly to return to the original size.

Slow Motion

- 1 Press **SLOW** during playback to select the required speed: 3/4, 1/2, 1/4, 1/8 or 1/16.
→ Sound will be muted.
- 2 To return to normal speed, press ▶||.

Forward/Reverse Searching

- 1 Press ◀◀▶▶ during playback to select the required speed: 1.5X, 2X, 4X, 8X, 16X, 32X (backward or forward)
→ Sound will be muted or intermittent.
- 2 To return to normal speed, press ▶▶.

Resuming playback from the last stopped point

Resume playback of the last movies is possible, even if player was in standby.

- Load movie file.
→ ‘Resume Playback?’ appears during playback. Select Confirm or Cancel
- During the message appears on the TV screen, select Cancel to start playback from the beginning.

Playback info

OSD menu shows playback information (for example, file name, current playback progress, audio and video codecs).

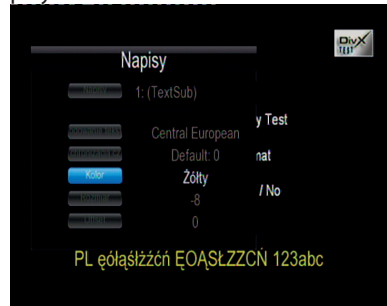
- During playback, press **DISPLAY**
→ A list of available information appears on the TV screen.
- Press **DISPLAY** again
→ A list of available information appears on the TV screen.

Changing the Audio Language

- Press **AUDIO** repeatedly to select different audio language or audio tracks.

Subtitles

Subtitles adjustment during movie playback:



Display subtitle menu by pressing **SUB-T** button during playback.

- Use ▲▼ keys to change subtitle option.
- Use ◀▶ keys to adjust subtitle option.
- 1 Use ▲▼ ◀▶ keys to change subtitle file. “Subtitle” option.
- 2 Use ▲▼ ◀▶ keys to change time shift. “Time Sync” option.
- 3 Use ▲▼ ◀▶ keys to change font color. “Color” option.

Press **SUB-T** button again to close subtitle menu.

Helpful Hints:

- Subtitle files with the following filename extensions (.srt, .smi, .sub, .ssa, .idx, .txt, .ass, .psb) are supported. Embedded subtitles in MKV files are supported.

Major functions

Playing pictures or audio files

Ariva player is able to access and view the data in the supported USB device, SDHC card, UPnP or network.

General Operation

- 1 Use ▲▼ to navigate within the menu and select the device you want to access, then press **OK**.
→ A file menu that contains all supported files will be displayed on the TV screen.
→ The memory reading time may exceed 30 seconds due to the complexity of the directory/file configuration.
- 2 Press ▲▼ to select the folder and press **OK** to open the folder.
- 3 Press ▲▼ to select a track/picture.
- 4 Press **OK** to confirm.

Playback selection

During playback, you can;

- Press ◀▶ to select the previous/next track/file in the current folder.
- Press ▶|| repeatedly to pause/resume playback.

Zoom picture

- During picture viewing, press **ZOOM** repeatedly to display the picture with different scales.
- Use ▲▼ ◀▶ to view the zoomed picture

Rotating Pictures

- During playback, press ◀▶ to rotate the picture on the TV screen.
◀: flip the picture anti-clockwise by 90°
▶: flip the picture clockwise by 90°

Helpful Hints:

- It may not be possible to play certain picture files due to the configuration and used specific algorithm (especially in TIFF files)

Playing music files and pictures simultaneously

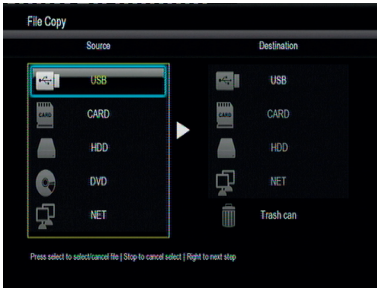
- 1 Load storage that contains music and picture.
→ Load a disc that contains music and picture.
- 2 Select an music track.
- 3 During music playback, select a picture from the TV screen and press **OK**.
→ The picture files will be played back one after another until end of the folder.
- 4 To quit simultaneous playback, press ■.

Helpful Hint:

- Some files may be distorted during playback due to the configuration and characteristics of the content.
- During simultaneous playback, fast forward / reverse or slow forward is not available.
- Background music playback when photo slide show play only music files when music files reside the same folder of photos.

File copy

Ariva player is able to copy and move files among supported devices.



General Operation

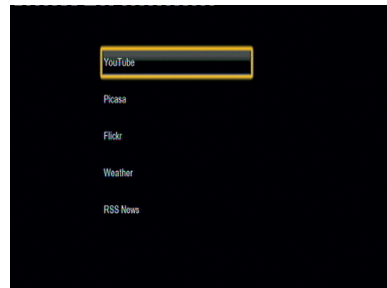
- 1 Select "File Copy" menu item
- 2 Use ▲▼ to navigate within the menu and select source and destination device, then press **OK**.
 - A file menu that contains all supported files will be displayed on the TV screen.
 - The memory reading time may exceed 30 seconds due to the complexity of the directory/file configuration.
- 3 Press ▲▼ to select the source and destination folder and press **OK** to open the folder.
- 4 Press ▲▼ and **SELECT** button to select a file.
- 5 Press ► to choose destination folder.
- 6 Press ► to open operation menu.
- 7 Use ▲▼ to choose Copy or Move operation
- 8 Press **OK** to confirm.

Helpful Hint:

- Recording on connected DVD drive is not available
- You can delete files in "File copy" menu. You need just to move files to "Trash can".

IMS

Ariva player has support for selected Internet services.

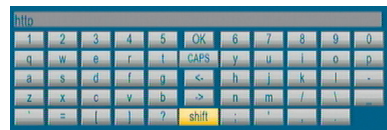


RSS News

To add new RSS feed you need to enter full address for example:
<http://somesite.com/rss/news.xml>

Helpful Hint:

- To enter ":" character you need to switch keyboard mode (press "shift" button on virtual keyboard).



Major functions

ENGLISH

SATA bay

You can install 3,5 SATA HDD in Ariva player.



Installing HDD is necessary to activate:

- NAS function (Samba server)
- BitTorrent client

Helpful Hint:

→ For ease of use, we recommend you choose a silent hard drive. The major manufacturers of hard disk offer models optimized for use “in the living room.” They are generally quieter and emit less heat than their kind “computer.”

CAUTION!

→ HDDs upto 2 TB are supported. Larger HDDs may not work correctly.

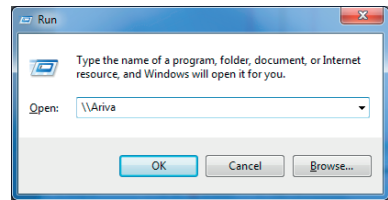
NAS function (Samba server)

Ariva player has embedded Samba server and therefore can work as a NAS (Network-Attached Storage).

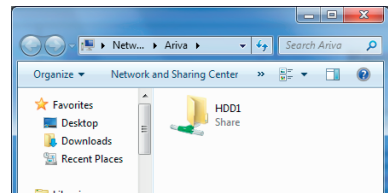
General Operation

You can access Internal HDD from any computer:

- 1 Enter \\Ariva in Run window and press OK.



- 2 You will see HDD1 of your Ariva player as shown on the below illustration



- 3 Optional. Right key Click to HDD1 folder. Select the “Map Network Drive” menu. Then you can directly connect to Ariva in computer.

CAUTION!

→ To use this function you need to install and format internal HDD first.

BitTorrent client

Ariva player has built-in simple BitTorrent client. This client downloads files onto internal HDD (Folder BT).

Neighbor Web Interface

- ➊ Input <http://ariva/> (or Ariva IP address) into web browser address bar and press Enter.
- ➋ The “Neighbor web” will display Player’s status and storage device.
- ➌ At Home page, Select “BitTorrent Download”. Ariva will display current torrent download queue.

Add new torrent

- ➊ Click “Add new torrent” button. “Add new torrent” page will appear.
- ➋ Click “Browser” button to choose torrent file path from local PC. When you select a torrent file, press “Open” button to add.
- ➌ Click “Yes” to confirm selected file.
- ➍ The page will display “Loading”, then web browser will return to download page.
- ➎ Click “Start” to begin download

CAUTION!

- ➔ Part of torrent files in the Internet are illegal. Downloading these files is a crime and threatened prosecution. Please use only legal sources of torrent files for example: <http://www.youtorrent.com/> <http://www.legittorrents.info/> <http://www.clearbits.net/>
- ➔ To use this function you need to install and format internal HDD first.
- ➔ Due technical limitations of built-in BitTorrent client some torrent files may not load.

Setup Menu Options

This Player setup is carried out via the TV, enabling you to customise the Ariva player to suit your particular requirement.

Audio setup menu

- 1 Press **SETUP** button.
- 2 Press ◀▶ to select Audio tab.



Digital Audio Setup

- 1 In Audio setup tab, use ▲▼ keys to highlight “Digital Output”, then press **OK**.
- 2 Use ▲▼ keys to select a setting and press **OK** to confirm.

Helpful Hint:

→ If “Digital Output” is set to one of “LPCM” modes, then Ariva player will transcode supported audio tracks.
 → If “Digital Output” is set to one of “RAW” modes, then Ariva player will pass untouched audio bitstream to external device.

Video setup menu

- 1 Press **SETUP** button.
- 2 Press ◀▶ to select Video tab.

TV System

This menu contains the options for selecting the colour system (PAL or NTSC) and HDMI resolution that matches the connected TV.

- 1 In Video tab, press ▲▼ to highlight “Video system”, then press **OK**.
- 2 Press ▲▼ to select a setting:
 - 480p**: Progressive output in 480 lines for NTSC TV.
 - 576p**: Progressive output in 576 lines for PAL TV.
 - 720p**: Progressive output 720 lines.
 - 1080i**: Interlaced output 1080 lines.
 - 1080p**: Progressive output 1080 lines.
 - HDMI Auto**: Output automatically based on your display’s supported resolution.
- 3 Press **OK** to confirm.

Helpful Hint:

→ If not display appears on the TV screen due to unsupported resolution, use TV-SYS button on RCU or reconnect any available interlace video output to your display and re-adjust the resolution settings to 576p.
 → Select HDMI AUTO to automatically display the best resolutions settings.
 → 60Hz may not be supported by european TVs. It is value specific to TVs for USA market.

Aspect ratio

The picture shape can be adjusted to fit your TV.

① In Video tab, press ▲▼ to highlight "Aspect ratio", then press **OK**.

② Press ▲▼ to select a setting:

Panscan 4:3 : Select this for a full-height picture with the sides trimmed. Set it for legacy SD TV.

Letterbox 4:3 : Select this for a 'wide-screen' display with black bars on the top and bottom. Set it for legacy SD TV.

16:9 : Select this for wide-screen TV (frame ratio 16:9). Set it for HD ready or FullHD TV.

16:10 : Select this for wide-screen panels, for example computer monitors (frame ratio 16:10).

③ Press **OK** to confirm.

Network setup menu

① Press **SETUP** button.

② Press ◀▶ to select Network tab.



Wired LAN setup

This menu display current Ethernet network status and IP address. You can also configure manually static IP address.

Helpful Hint:

→ Default configuration (DHCP) should work in most networks.

Wireless setup

This menu display current WiFi network status and IP address. You can configure manually your connection here

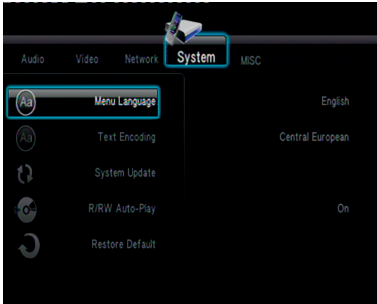
Helpful Hint:

→ Wireless network support require dedicated WiFi dongle in order to work correctly

Setup Menu Options

System setup menu

- 1 Press **SETUP** button.
- 2 Press ◀▶ to select System tab.



Menu Language

This menu contains various language options for display language on the screen.

Text encoding

You can set the font type that supports the filenames and subtitle encoding.

Central European (CP1250): Albanian, Croat, Czech, Dutch, English, German, Hungarian, Irish, Polish, Romanian, Slovak, Slovene and Sorbian.

Western (CP1252): Albanian, Danish, Dutch, English, Finnish, French, Gaelic, German, Italian, Kurdish (Latin), Norwegian, Portuguese, Spanish, Swedish and Turkish.

Cyrillic (CP1251) : Bulgarian, Belorussian, English, Macedonian, Moldavian, Russian, Serbian and Ukrainian.

Unicode (UTF-8) and others: select proper option if you have subtitles in this code page format

Login Control

This option enables password protection to Neighbor Web Interface. When this function is activated you need to enter username (admin) and password (123) to access Neighbor Web Interface.

BT and SAMBA

Turn on this function to activate:

- NAS function (Samba server)
- BitTorrent client

System Update

This function is for firmware upgrade. To upgrade firmware please follow instruction (.pdf file) that is included in firmware package.

Parental Control

Some DVDs may have a parental level assigned to the complete disc or to certain scenes on the disc. This feature lets you set a playback limitation level. The rating levels are from 1 to 8 and are country dependent. You can prohibit the playing of certain discs that are not suitable for your children or have certain discs played with alternative scenes.

Helpful Hints:

- ➔ Default password is 0000.
- ➔ DVDs that are rated above the level you selected will not play unless you enter your password

HDD Format

This function formats internal SATA HDD.

Ariva is able to format its internal hard drive. Formatting is done solely by the Ariva itself in a ext2 format.

CAUTION!

- When formatting the disc, the Ariva permanently erase all data stored there.

Restoring to original settings

Setting the "Restore Default" function will reset all options and your personal settings to the factory defaults.

Misc setup menu

- 1 Press **SETUP** button.
- 2 Press ◀▶ to select Misc tab.

Resume play

Ariva player by default saves last position in played movies, so when you return to watching movie you can start from this position.

Helpful Hint:

- Resume playback of the last movies is possible, even if player was in standby.

Slide show timing

Use this menu to set the time interval between pictures in the slide show.

Transition effect

Use this menu to set the favorite transition effect between pictures in the slide show.

Troubleshooting

WARNING

Under no circumstances should you try to repair the system yourself, as this will invalidate the warranty. Do not open the system as there is a risk of electric shock.

If a fault occurs, first check the points listed below before taking the system for repair. If you are unable to remedy a problem by following these hints, consult your dealer for help.

Problem	Solution
No power	<ul style="list-style-type: none">– Check if the AC power cord is properly connected.– Press the POWER on the RCU to turn on the power.
No picture	<ul style="list-style-type: none">– Refer to your TV's manual for correct Video In channel selection.– Check if the TV is switched on.
No sound or distorted sound	<ul style="list-style-type: none">– Adjust the volume.– Check that the speakers are connected correctly.
No audio at digital output	<ul style="list-style-type: none">– Check the digital connections.– Check if your receiver can decode Dolby Digital, DTS and if not, please make sure the digital output is set to LPCM.– Check if the audio format of the selected audio language matches your receiver capabilities.
The player does not respond to the Remote Control	<ul style="list-style-type: none">– Aim the Remote Control directly at the sensor on the front of the player.– Reduce the distance to the player.– Replace the batteries in the Remote Control.– Re-insert the batteries with their polarities (+/- signs) as indicated.
Player does not respond to some operating commands during playback.	<ul style="list-style-type: none">– Operations may not be permitted. Refer to the user manual
No sound during movies playback	<ul style="list-style-type: none">– The audio codec may not be supported by the player.
The contents of the USB flash drive cannot be read	<ul style="list-style-type: none">– The USB flash drive format is not compatible with the player.– Drive is formatted with a different file system.
Slow operations of the USB flash drive	<ul style="list-style-type: none">– Big file size or high resolution USB flash drive takes longer time to read and display on the TV screen.
No sound is output from the HDMI out	<ul style="list-style-type: none">– Check the connection between the TV and the HDMI jack of player.– Check your TV system setup correctly.
The TV screen is blank and the Ariva player power LED is blinking.	<ul style="list-style-type: none">– A system diagnostic failure occurred. Turn off your Ariva player, wait 10 minutes, turn it on again. If the something contact the Technical Support for assistance.
WiFi network (Infrastructure AP mode) does not appear in the list	<ul style="list-style-type: none">– Dedicated WiFi dongle is not plugged in USB port.– Router is not powered.– Is the WiFi enabled? See the configuration page of your router.– Is your router on the network name is set to: broadcast (not hidden).– Is this other device (for example PC) detects your WiFi access?– Is your Ariva close enough to your router? WiFi signal loses intensity with distance and if it encounters obstacles such as walls.– Is there a close Ariva device emitting waves may parasitize Ariva's WiFi dongle? (mobile phone, wireless headphones, listen baby, speaker, HiFi)– Does MAC filtering is enabled on your router?

Operating System

Linux

Processor

Realtek RTD1073DD+

Flash

256 MiB (2 Gbit) NAND

RAM

128 MiB DDR2 SDRAM

Optional USB equipment (not included)

WiFi dongle

DVD drive

Network

Wired 100Mbps Ethernet

Wireless optional WiFi dongle
802.11n--Realtek RTL8191SU

Connections

CVBS Output	Cinch (yellow)
HDMI Output	HDMI 1.3
Audio Output (L+R)	2x Cinch (white/red)
Digital Output	1 coaxial 1 optical
Port USB	2x USB 2.0 type A
Port Ethernet	1x RJ-45
Card reader	1x SD/MMC/MS

Cabinet

Dimensions (w x h x d) 288 x 188 x 43 mm

Weight Approximately 1,2 kg (without
HDD)

Power consumption

AC/DCAdapter DC 12 V / 3 A

Power consumption < 36 W

Specifications subject to change without prior notice

HD (High Definition) - Used to describe video content that is in one of the high definition video formats. These are broadly 720i/p and 1080i/p. The 720 or 1080 refers to the number of horizontal lines used to define the picture and the “i” and “p” refer to “interlaced” or “progressive scan”. Ordinary, “SD / Standard Definition” TV used 576 lines (PAL standard).

Full-HD - HD television standard for 1080p quality video, with 1080 horizontal lines.

HD Ready - HD television standard for 720p quality video, with 720 horizontal lines.

Composite (CVBS) - Low quality analogue video signal format. Can carry PAL signal..

Component (YPbPr) - Higher quality analogue video signal format. Splits the video signal into three components to maintain signal clarity and capable of carrying high definition video up to 1080p. Component is rapidly being phased out in favour of digital video via HDMI.

HDMI: High Definition Multimedia Interface. A specification developed by the HDMI Working Group that combines multi-channel audio and high definition video and that controls signals into a single digital interface for use with DVD players, digital television, and other audiovisual devices.

Aspect ratio: The ratio of vertical and horizontal sizes of a displayed image. The horizontal vs. vertical ratio of conventional TVs is 4:3, and that of widescreens is 16:9.

Disc menu: A screen display prepared for allowing selection of images, sounds, subtitles, multi-angles, etc recorded on a DVD.

JPEG: A very common digital still picture format. A still-picture data compression system proposed by the Joint Photographic Expert Group, which features small decrease in image quality in spite of its high compression ratio.

XviD: MPEG-4 based video compression technology, that can shrink digital video to sizes small enough to be transported over the internet, while maintaining high visual quality.

H.264: is a next-generation video compression format. H.264 is also known as MPEG-4 AVC. Developed for use in high definition systems such as HDTV, Blu-ray as well as low resolution portable devices, H.264 offers better quality at lower file sizes than both MPEG-2 and MPEG-4 ASP (DivX or XviD). H.264 is sometimes referred (erroneously) as x264 – x264 is the name of a popular freeware encoder for the H.264 format. H.264 is also sometimes referred to as MP4, again this is technically incorrect. MP4 is a container format much like AVI or MKV and it can be used to “house” many different types of compression codecs, not just H.264.

Container. The multimedia container file is used to identify and interleave different data types. Simpler container formats can contain different types of audio codecs, while more advanced container formats can support multiple audio and video streams, subtitles, chapter-information, and meta-data (tags) — along with the synchronization information needed to play back the various streams together. There are many container formats, such as AVI, Matroska (MKV), MOV, MP4, OGM, WAV, etc.

Analog: Sound that has not been turned into numbers. Analog sound varies, while digital sound has specific numerical values. These jacks send audio through two channels, the left and right.

Digital: Sound that has been converted into numerical values. Digital sound is available when you use the DIGITAL AUDIO OUT COAXIAL or OPTICAL jacks. These jacks send audio through multiple channels, instead of just two channels as analog does.

PCM (Pulse Code Modulation): A system for converting analog sound signal to digital signal for later processing, with no data compression used in conversion.

S/PDIF - Format for carrying audio digitally over either optical (TOSLINK) or electrical (Coaxial) cable. Can carry high quality DTS or Dolby Digital audio.

TOSLINK - Standardised optical fibre connection system invented by Toshiba. Typically used to connect the Player to a AV receiver for pass-through of HiFi audio. When we refer to digital optical we mean S/PDIF via TOSLINK.

Dolby Digital (or AC-3) - It is a surround sound system developed by Dolby Laboratories containing up to six channels of digital audio (front left and right, surround left and right, center and subwoofer). It is a required standard of both Blu-Ray and DVD and the most widely supported. It is a 'lossy' format so is of a lesser quality than the studio original. Surround sound up to 5.1 channel is supported. The Dolby Digital audio track can either be decoded (downmixed) to stereo in the Player or digitally bitstreamed direct (passthrough) to a compatible AV receiver (via TOSLINK/Coaxial/HDMI) for decoding.

Dolby Digital Plus (or E-AC3) - is an enhanced version of Dolby Digital offering higher bit-rates and the possibility for 7.1 surround sound. Although better quality than Dolby Digital, it is still a 'lossy' format. Dolby Digital Plus is little used and has largely been passed over in favour of higher quality lossless formats.

DTS (Digital Theater System) - is a required standard of both Blu-Ray and DVD players and is widely regarded to produce audio quality superior to Dolby Digital. Up to 5.1 channel surround sound is supported. DTS is a 'lossy' compression standard so the audio is of a lesser quality than the original studio recording. The DTS audio track can either be decoded (downmixed) in the Player to stereo or digitally bitstreamed direct (passthrough) to a compatible receiver (via TOSLINK/Coaxial/HDMI) for decoding.

DTS-HD MA (Master Audio) - is a lossless compression format giving audio identical to the original studio recording. It supports up to 8 channels for surround sound. Unlike Dolby TrueHD, DTS-HD MA works in a core+extension configuration so players that do not support it can extract the DTS core audio. DTS-HD MA can either be downmixed to an analogue format if supported by the player, or bitstreamed via HDMI 1.3 to a compatible AV receiver. TOSLINK or Coaxial S/PDIF cannot carry a DTS-HD MA signal because the S/PDIF standard was finalised long before lossless HD-Audio was envisaged. HDMI 1.3 or higher is therefore the only way to pass DTS-HD MA audio.

LAN (Local Area Network) - A computer network covering a small area, typically a home or a small office. Connections are typically by Ethernet cable or Wi-Fi.

Universal Plug and Play (UPnP) is a set of networking protocols. The goals of UPnP are to allow devices to connect seamlessly and to simplify the implementation of networks in the home (data sharing, communications, and entertainment). UPnP achieves this by defining and publishing UPnP device control protocols (DCP) built upon open, Internet-based communication standards. UPnP AV stands for UPnP Audio and Video. The UPnP AV standards have been referenced in specifications published by other organizations including Digital Living Network Alliance Networked (DLNA) Device Interoperability Guidelines, International Electrotechnical Commission IEC 62481-1, and Cable Television Laboratories OpenCable Home Networking Protocol.

Samba - Implementation of network protocols allowing access to files over a network. It implements many protocols and is commonly used because of its compatibility with both Windows and Linux.

NAS (Network Attached Storage) - A NAS unit is simply a storage device that can connect to a network independent of a computer. It will have its own chipset and operating system, controlling the communication with the network. Typically a NAS unit will contain one or more large hard drives. You could use a NAS to allow access to a large collection of music and movies.

SATA (Serial ATA) - Interface standard for connecting internal hard drives. Replaced ATA / EIDE and is capable of very fast data transfer. Is available as SATA 1 operating at a maximum 1.5Gb/s and SATA 2 operating at a maximum 3Gb/s. In real world use mechanical hard disks will never reach the data transfer ceiling of SATA 1.

www.ferguson-digital.eu